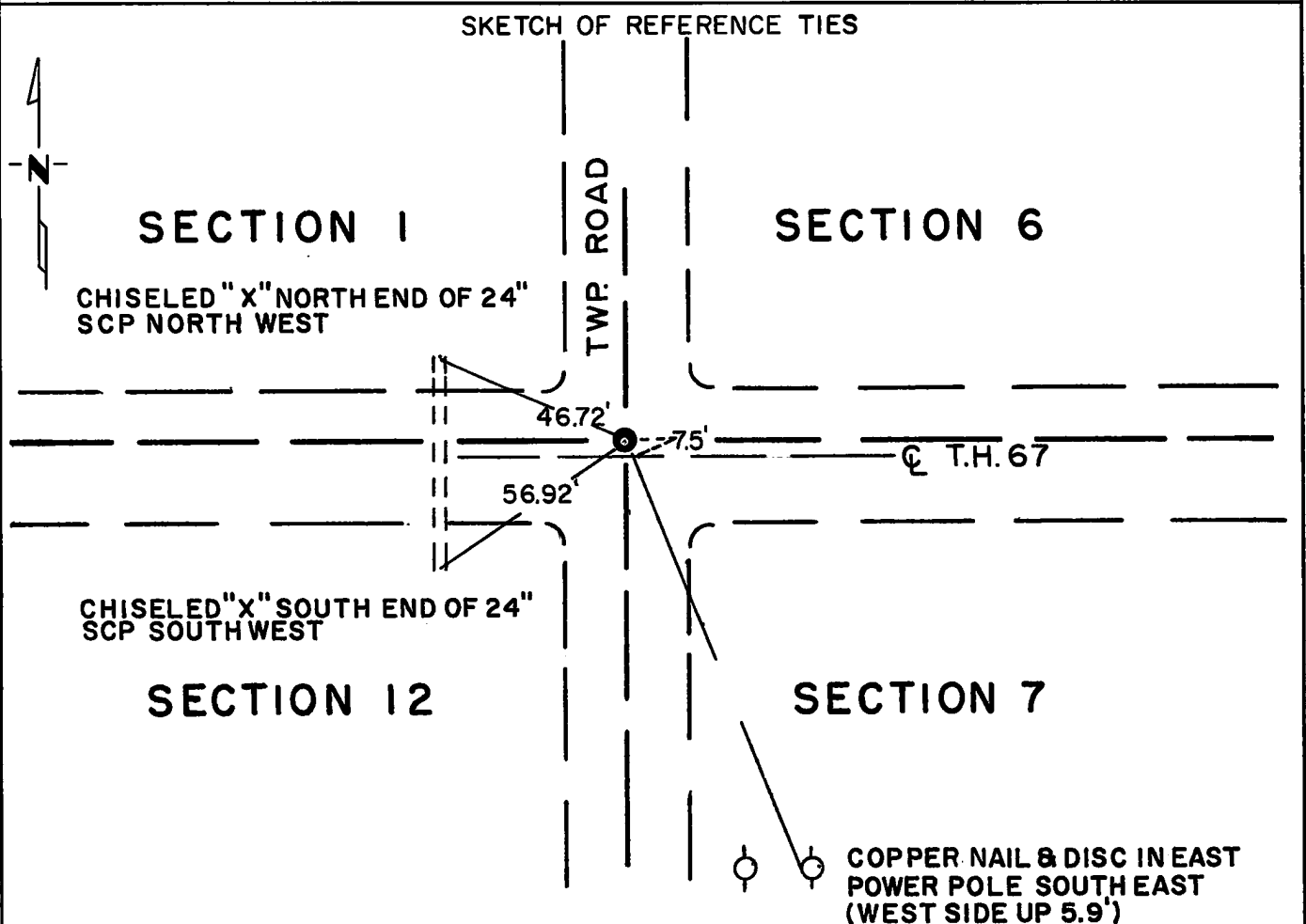


CERTIFICATE OF LOCATION OF GOVERNMENT CORNER

Northeast Corner of Section 12, Township 115N, Range 41W, 5th P.M.
STATE OF MINNESOTA, County of Yellow Medicine

At the corner location shown on the sketch:

- On May 22, 1974 found a 2 inch x 3 inch wood stake down 6.0 feet below road surface on centerline North-South township road and 7.5 feet North centerline T.H. 67.
 left monument as found, lowered monument, removed monument (explain)
- On July 19, 1974 placed a Minnesota Highway Department cast iron monument with a 3/4 inch iron pin under (cast iron down 1/2 inch).



Statement of evidence relative to this corner location is on back of page.

I hereby certify that this document and the data contained herein was prepared by me or under my direct supervision.

Goodwin R. Heimbold 9-23-74
SIGNATURE DATE

Registration No. 5761

Land Surveyor, Professional Engineer
 County Surveyor, County Engineer

OFFICE OF THE REGISTER OF DEEDS
County of Yellow Medicine

I hereby certify that this document was filed in the Reg. of Deeds office at 1:40 P.M. on the 24 day of SEPTEMBER A.D., 19 74

Register of Deeds Norman J. Opdahl
By Kay Nordahl, Deputy
DOCUMENT NO. 163994

Statement of Evidence: NORTHEAST CORNER SECTION 12, T115N, R41W

In 1895 and 1901 John E. Norgaard found a wood stake. In 1901 he replaced the wood stake with a 6 inch x 6 inch x 24 inch jasper monument.

In 1921 John Norgaard found the jasper monument in place.

Prior to 1956 the Minnesota Highway Department found a wood stake in place.

On May 22, 1974 the Minnesota Highway Department found a 2 inch x 3 inch wood stake on centerline of North-South road and 7.5 feet North of centerline of East-West Highway (T.H. 67).

I could not determine who replaced the jasper monument with a wood stake.

On July 19, 1974 the Minnesota Highway Department placed a cast iron monument with a 3/4 inch iron pin below it to mark the corner.