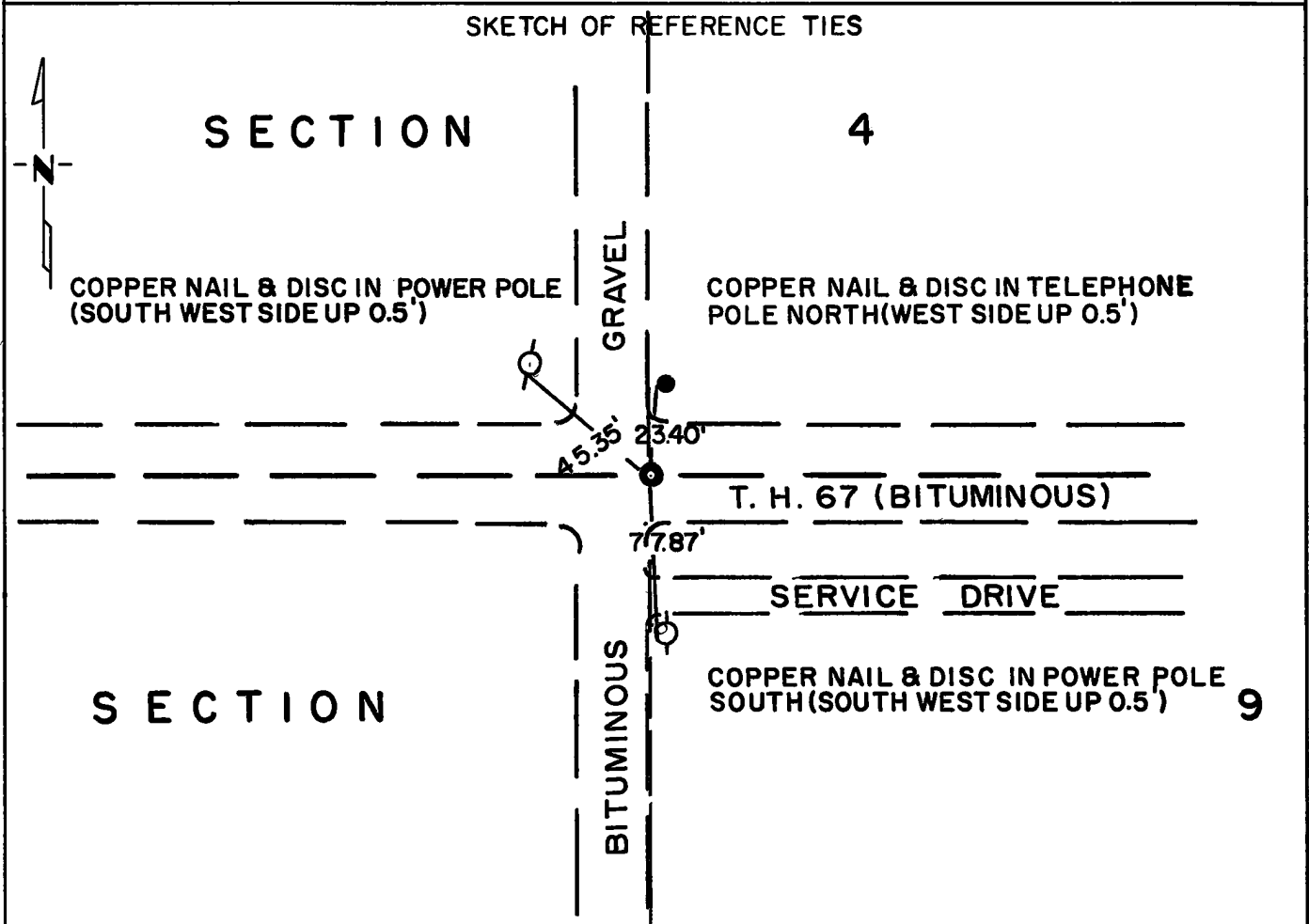


CERTIFICATE OF LOCATION OF GOVERNMENT CORNER

North Quarter Corner of Section 9, Township 115N, Range 41W, 5th P.M.
STATE OF MINNESOTA, County of Yellow Medicine

At the corner location shown on the sketch:

- On May 17, 1974 found a 1 inch iron pipe on centerline highway and on East edge street North-South down 18 inches.
 left monument as found, lowered monument, removed monument (explain)
- On July 19, 1974 placed a Minnesota Highway Department cast iron monument with 3/4 inch iron under monument (cast iron down 1/2 inch).



Statement of evidence relative to this corner location is on back of page.

I hereby certify that this document and the data contained herein was prepared by me or under my direct supervision.

Gordon R. Heindall 9-23-74
SIGNATURE DATE

Registration No. 5761

- Land Surveyor, Professional Engineer
- County Surveyor, County Engineer

OFFICE OF THE REGISTER OF DEEDS
County of Yellow Medicine

I hereby certify that this document was filed in the Reg. of Deeds office at 1:50 P.M. on the 24 day of SEPTEMBER A.D., 19 74

Register of Deeds Norman J. Opdahl

By Kay Nordahl, Deputy

DOCUMENT NO. 163995

Statement of Evidence: NORTH QUARTER CORNER SECTION 9, T115N, R41W

In 1910 a large field stone and iron bolt marked the corner. It was used in platting in Clarkfield.

The Minnesota Highway Department right of way map shows reference to a 1 inch iron pipe prior to 1956.

On May 17, 1974 the Minnesota Highway Department found a 1 inch iron pipe on centerline of East-West Highway (T.H. 67) and on East edge of streets North-South.

I could not determine who placed the stone and bolt or who replaced it with the 1 inch iron pipe.

On July 19, 1974 the Minnesota Highway Department removed the 1 inch iron pipe and replaced it with a 3/4 inch iron pin with a cast iron monument on top.