

CERTIFICATE OF LOCATION OF GOVERNMENT CORNER

North Quarter Corner of Section 34, Township T114N, Range R40W, 5th P.M.

STATE OF MINNESOTA, County of Yellow Medicine

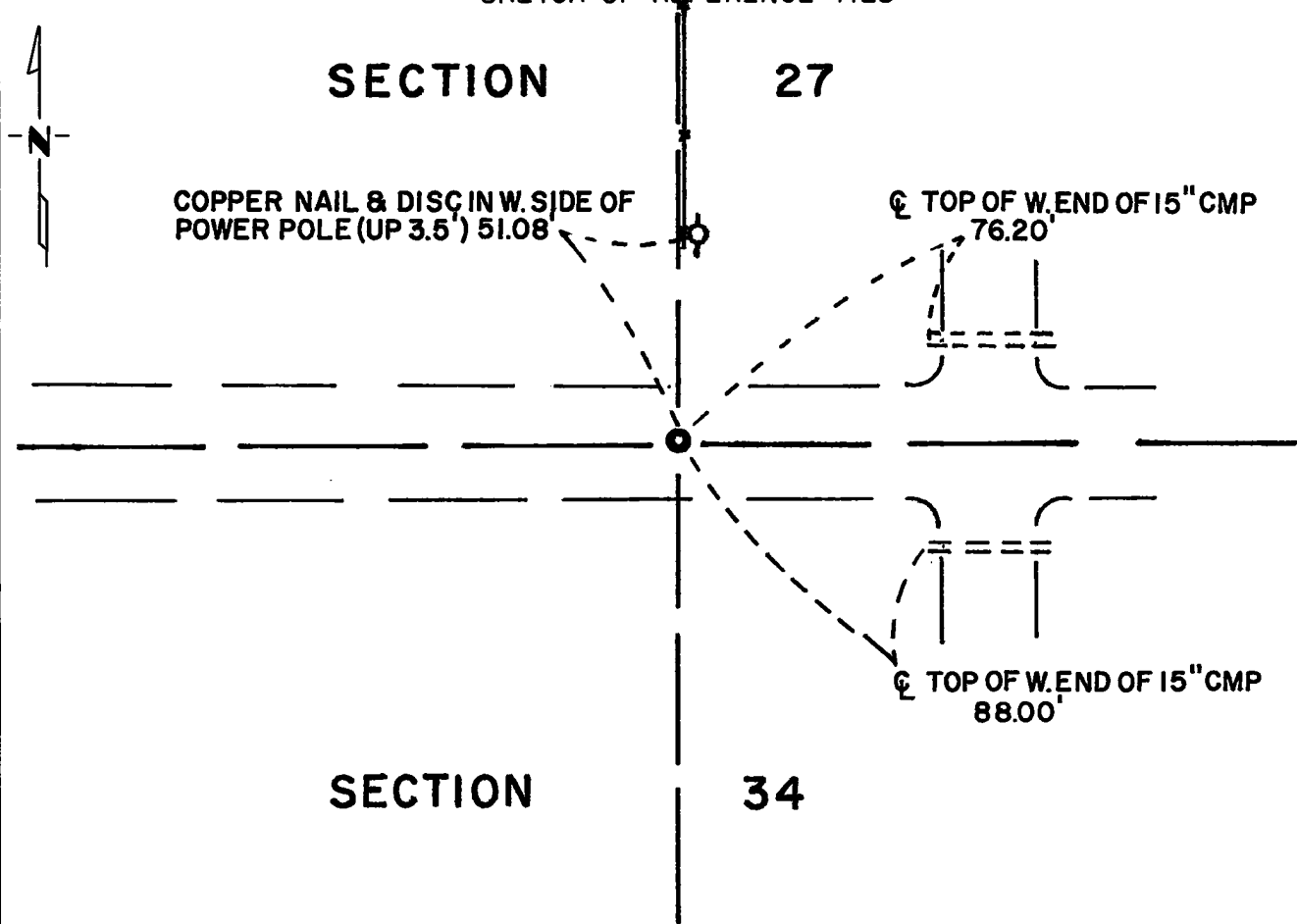
At the corner location shown on the sketch:

On _____ found a _____
DATE

left monument as found, lowered monument, removed monument (explain)

On April 15, 1975 placed a Minnesota Highway Department cast iron monument on centerline on east-west road & 1 foot west of fence line north.
DATE

SKETCH OF REFERENCE TIES



Statement of evidence relative to this corner location is on back of page.

165017

I hereby certify that this document and the data contained herein was prepared by me or under my direct supervision.

John E. Suenen 4-21-75
SIGNATURE DATE

Registration No. 10460

- Land Surveyor, Professional Engineer
- County Surveyor, County Engineer

OFFICE OF THE REGISTER OF DEEDS
County of Yellow Medicine

I hereby certify that this document was filed in the Reg. of Deeds office at 9:00 A.M. on the 28 day of APRIL A.D., 1975

Register of Deeds Norman J. Gudehl

By Kay Nordahl, Deputy

DOCUMENT NO. 165017

Statement of Evidence:

North Quarter Section 34

The original Public Land Survey was run in 1858 and a wood post was set in a mound with pits to mark the corner.

In 1889 Jonah Peterman, County Surveyor, established the corner by single proportionate methods and set a stone to mark the corner.

In 1916 John Norgaard, County Surveyor, found the corner as set by Peterman in 1889.

There is no additional information on this corner.

The Minnesota Highway Department did not excavate for the corner because the County constructed a new road in 1970 and the corner was probably destroyed during grading operations. It appears to be in a 7 foot cut section and the County Highway Department did not reference the corner.

On April 15, 1975, the Minnesota Highway Department set a cast iron monument at the lost location. The lost location for this corner fits the property line to the north by 1 foot.

For details of survey analysis, see Survey Report for S.P. 4203 and 8701 on file in the Surveys Section, Minnesota Highway Department, Willmar, Minnesota.