

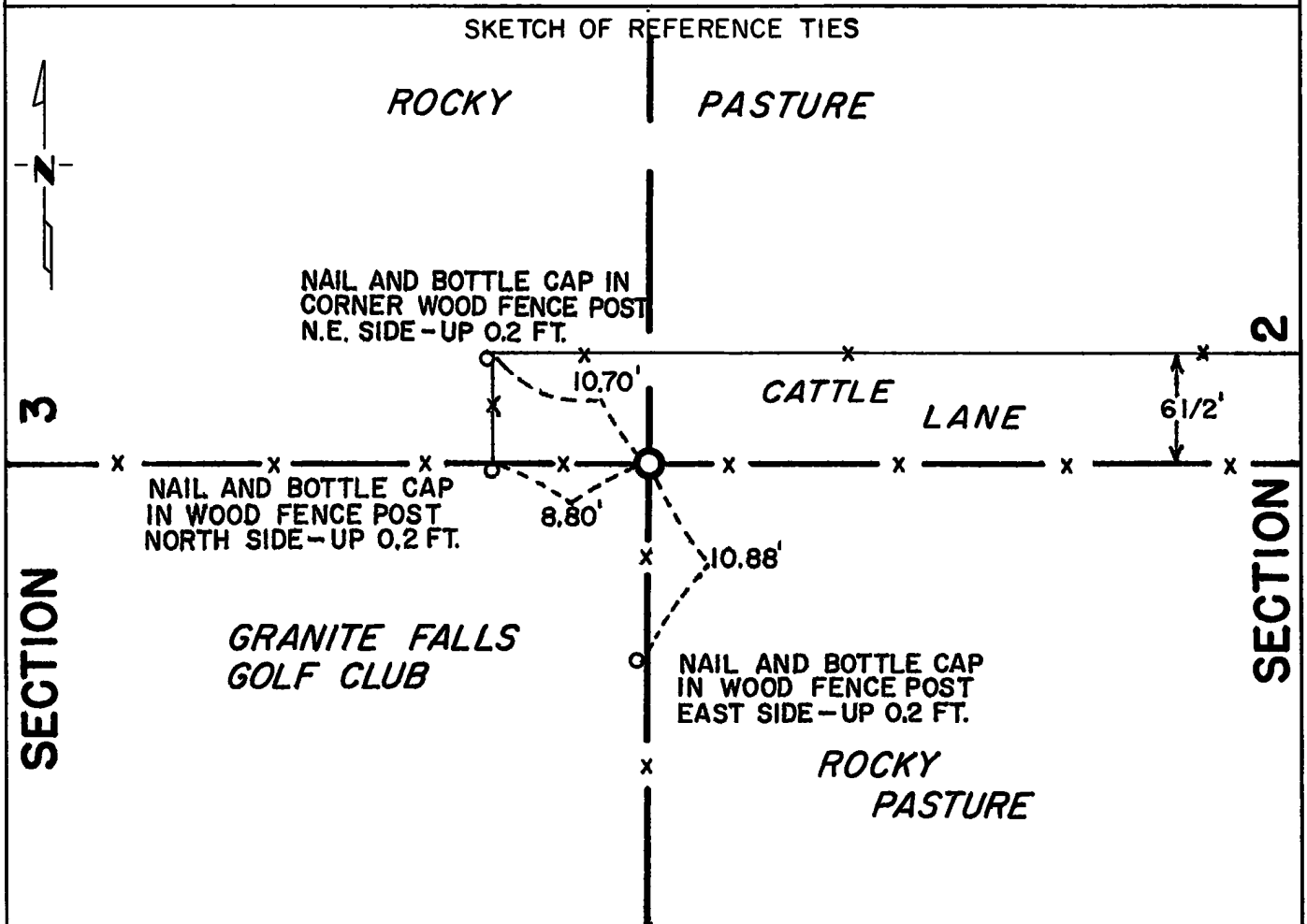
CERTIFICATE OF LOCATION OF GOVERNMENT CORNER

East Quarter Corner of Section 3, Township 115 N, Range 39 W, 5th P.M.

STATE OF MINNESOTA, County of Yellow Medicine

At the corner location shown on the sketch:

- On July 15, 1974 found a Fence corner - fences east, west, and south
DATE
 No other monument was found
 - left monument as found, lowered monument, removed monument (explain)
- On May 9, 1975 placed a Minnesota Highway Department cast iron monument
DATE
On the northeast side of the fence corner



Statement of evidence relative to this corner location is on back of page.

I hereby certify that this document and the data contained herein was prepared by me or under my direct supervision.

John E. Swenson 5-22-75
SIGNATURE DATE

Registration No. 10460

- Land Surveyor, Professional Engineer
- County Surveyor, County Engineer

OFFICE OF THE REGISTER OF DEEDS
 County of Yellow Medicine

I hereby certify that this document was filed in the Reg. of Deeds office at 9:15 A.M. on the 30 day of May A.D., 19 75

Register of Deeds Norman J. Opdahl

By Kay Nordahl, Deputy

DOCUMENT NO. 165185

Statement of Evidence: East Quarter Corner Section 3, T115N, R39W, 5th P.M. The Public Land Survey was completed in 1864 by Charles E. Davis and J. W. Webb Jr. A wood post was set in a dirt mound with pits to mark the corner.

In 1892, Jonah Peterman surveyed the East line of Section 3 and set a wood post to mark the East quarter corner at equal proportional distances from the Southeast section corner to the meander corner on the southerly bank of the Minnesota River. He set the meander corner according to the stumps of the government bearing trees. His distances were 2679.6 feet from the Southeast section corner to quarter corner and 1742.4 feet from quarter corner to meander corner.

In 1924, John Norgaard, County Surveyor, found a stake marking the quarter corner at the intersection of fences East, West, and South. He said this stake was set by him in 1904 to mark the corner. His distance from the Southeast corner to the quarter corner was 2810 feet. The sixteenth corner was shown as being midway and on line between corners, that is, 1405 feet each way.

A golf course has occupied all of the NE $\frac{1}{4}$ of the SE $\frac{1}{4}$ of Section 3 since 1929.

On July 15, 1974 a Minnesota Highway Department survey crew searched for the quarter corner but only found the intersection of fences East, West, and South. No wood stake or other monument was found. A search was also made for the meander corner but nothing was found. The Southeast corner of the section was located. There is a fence corner at the Southeast corner of the golf course, fences North, South and East and was assumed to be the sixteenth corner. The 1974 electronic survey determined that the distance from the Southeast corner of the section to the intersection of fences at the assumed quarter corner to be 2812.23 feet. The assumed sixteenth corner is 1406.84 feet and 1405.41 feet from the Southeast corner of the section and the assumed quarter corner respectively. As these results fit Norgaard's 1924 survey very closely, the intersection of fences East, West and South is accepted as the location of the East quarter corner.

For details of survey analysis and 1974 electronic measurements see Survey Report for S.P. 8701-18 from 0.3 miles North of the Yellow Medicine River to Granite Falls on file in the Surveys Section, Minnesota Highway Department, Willmar, Minnesota.