

CERTIFICATE OF LOCATION OF GOVERNMENT CORNER

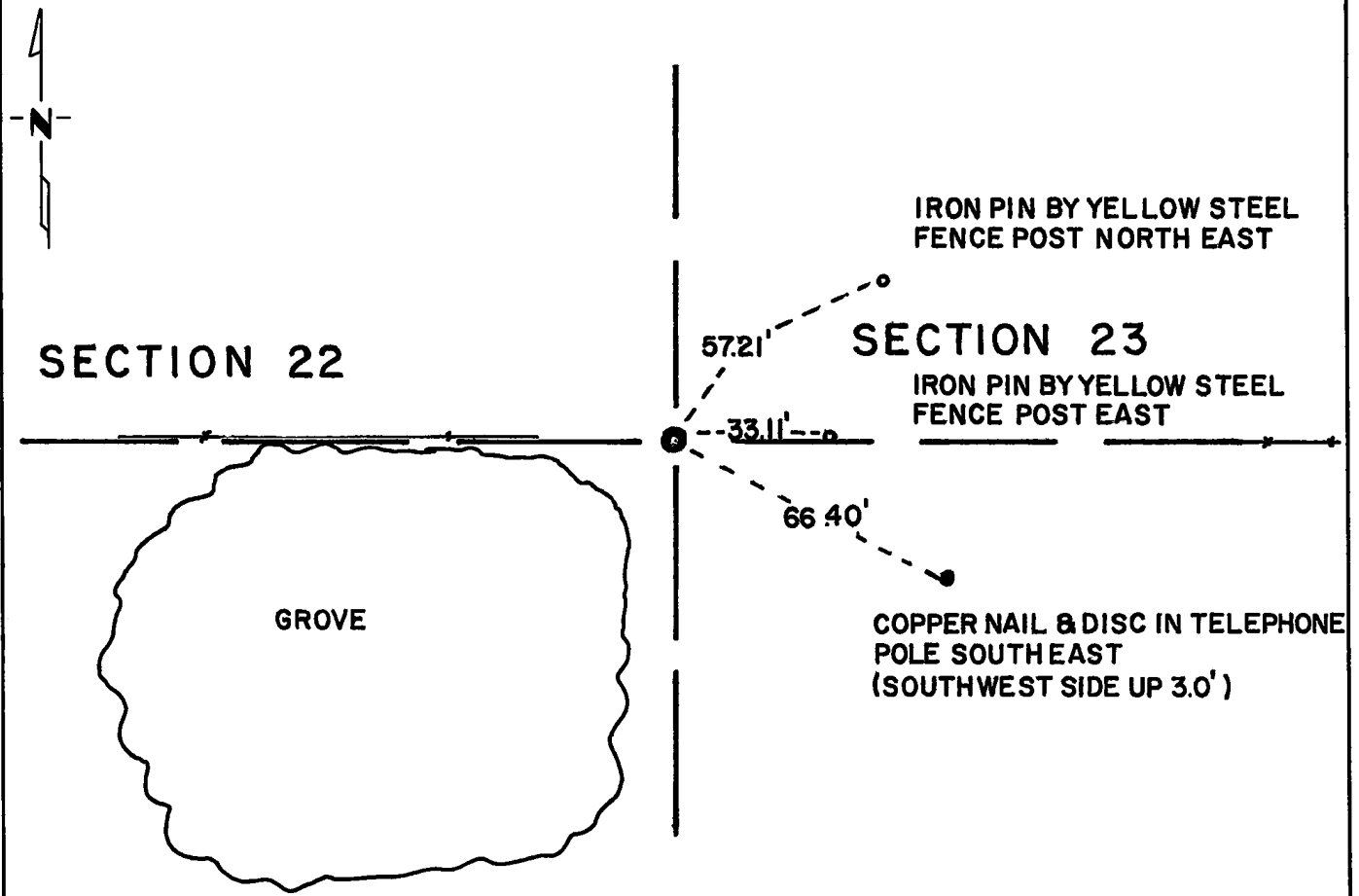
East Quarter _____ Corner of Section 22, Township 114N, Range 40W, 5th P.M.

STATE OF MINNESOTA, County of Yellow Medicine

At the corner location shown on the sketch:

- On May 5, 1975 found a 8" x 8" x 12" pointed field stone one foot north of fence line east and west and p.l. for north and south road
DATE
- left monument as found, lowered monument, removed monument (explain)
- On May 6, 1975 placed a Minnesota Highway Department cast iron monument over stone DATE down 0.3 feet below surface

SKETCH OF REFERENCE TIES



Statement of evidence relative to this corner location is on back of page.

I hereby certify that this document and the data contained herein was prepared by me or under my direct supervision.

John E. Juener 6-18-75
SIGNATURE DATE

Registration No. 10460

- Land Surveyor, Professional Engineer
- County Surveyor, County Engineer

OFFICE OF THE REGISTER OF DEEDS
County of Yellow Medicine

I hereby certify that this document was filed in the Reg. of Deeds office at 10:30 A.M. on the 27 day of June A.D., 19 75

Register of Deeds Norman J. Opdahl

By Kay Nordahl, Deputy

DOCUMENT NO. 165415

Statement of Evidence:

The original Public Land Survey was run in 1858 and a wood post was set in mound with pits to mark the corner.

There is no additional record data pertaining to this corner.

On May 5, 1975 the Minnesota Highway Department found a 8" x 8" x 12" pointed field stone one foot north of fence line east and west and at the point of intersection of tangents on a north-south township road.

The origin of the stone could not be determined, but it is in agreement with occupation lines of long standing. The inplace stone is accepted as the location of the Public Land Survey corner.

For details of survey analysis and 1975 electronic survey measurements, see Survey Report for S.P. 4203 and 8701 on file in the Surveys Section, Minnesota Highway Department, Willmar, Minnesota.