

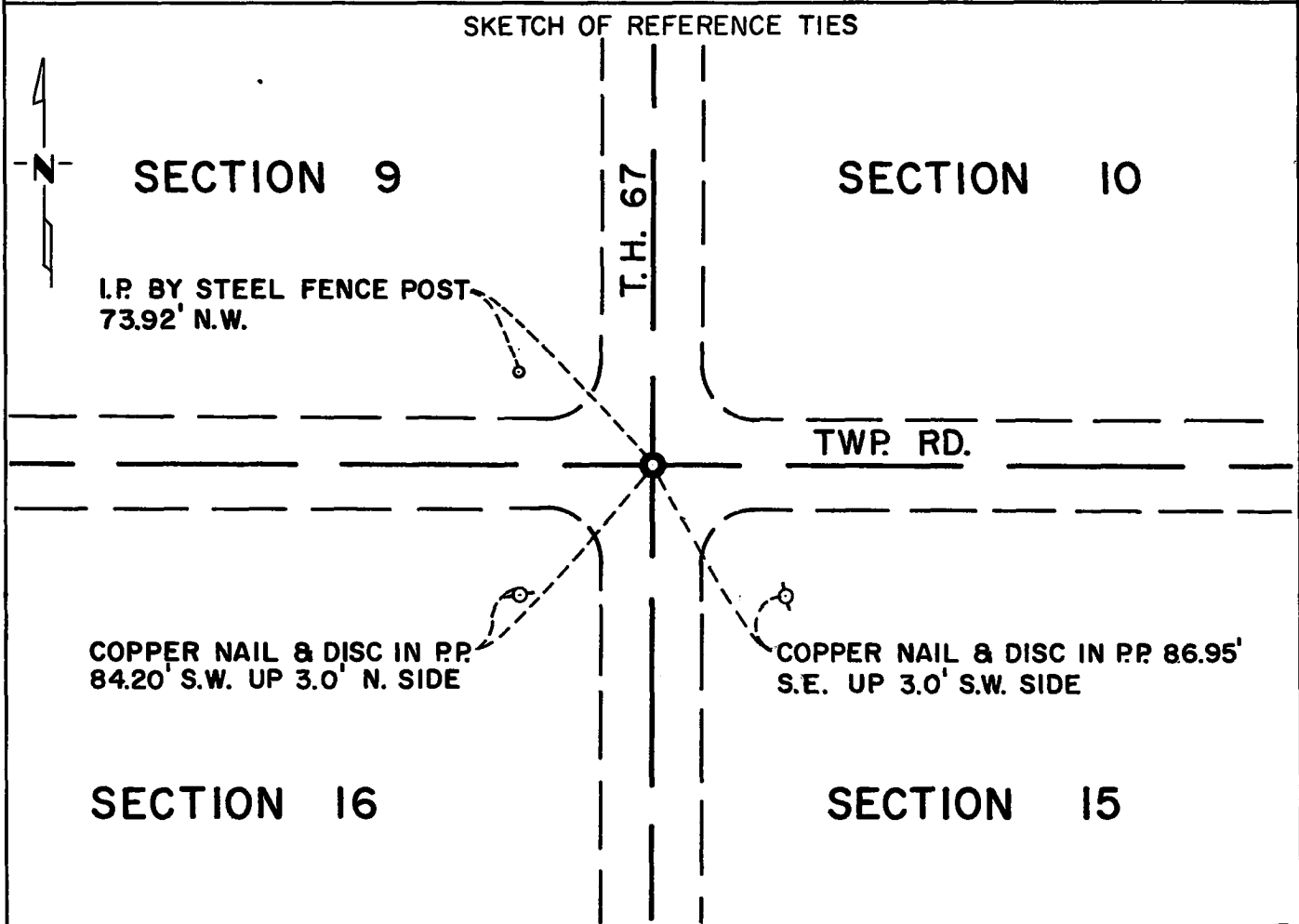
CERTIFICATE OF LOCATION OF GOVERNMENT CORNER

Northeast Corner of Section 16, Township 114N, Range 38W, 5th P.M.

STATE OF MINNESOTA, County of Yellow Medicine

At the corner location shown on the sketch:

- On May 6, 1975 found a 6"x6"x24" Jasper monument on centerline north-south
DATE
T.H. 67 and Twp. Rd. east-west.
 - left monument as found, lowered monument, removed monument (explain)
- On Dec. 4, 1975 placed a Minnesota Highway Department cast iron monument
DATE
down 1 inch below road surface.



Statement of evidence relative to this corner location is on back of page.

RECORDED
GRANTED
INDEXED

I hereby certify that this document and the data contained herein was prepared by me or under my direct supervision.

Richard M. Koszykowski 3/9/76
SIGNATURE DATE

Registration No. 11524

- Land Surveyor, Professional Engineer
- County Surveyor, County Engineer

OFFICE OF THE REGISTER OF DEEDS
County of Yellow Medicine

I hereby certify that this document was filed in the Reg. of Deeds office at 9:05 A.M. on the 18 day of March A.D., 1976

Register of Deeds Norman J. Opdahl

By Kay Nerdahl, Deputy

DOCUMENT NO. 166656

Statement of Evidence: Northeast Corner Section 16, Township 114N, Range 38W.

The original Public Land Survey was run in 1864 and a post was set in a mound with pits to mark the corner.

In 1891, Jonah Peterman found the original government corner.

In 1901, John Norgaard found a stone and set a jasper monument to mark the corner.

In 1923, John Norgaard found the jasper monument in place.

In 1941, the MHD found a stone monument in place.

On May 6, 1975, the Minnesota Highway Department found a 6"x6"x24" jasper monument.

The origin of the stone could not be determined.

An analysis of the record data indicates that the jasper monument is in the accepted location of the Public Land Survey corner.