

CERTIFICATE OF LOCATION OF GOVERNMENT CORNER

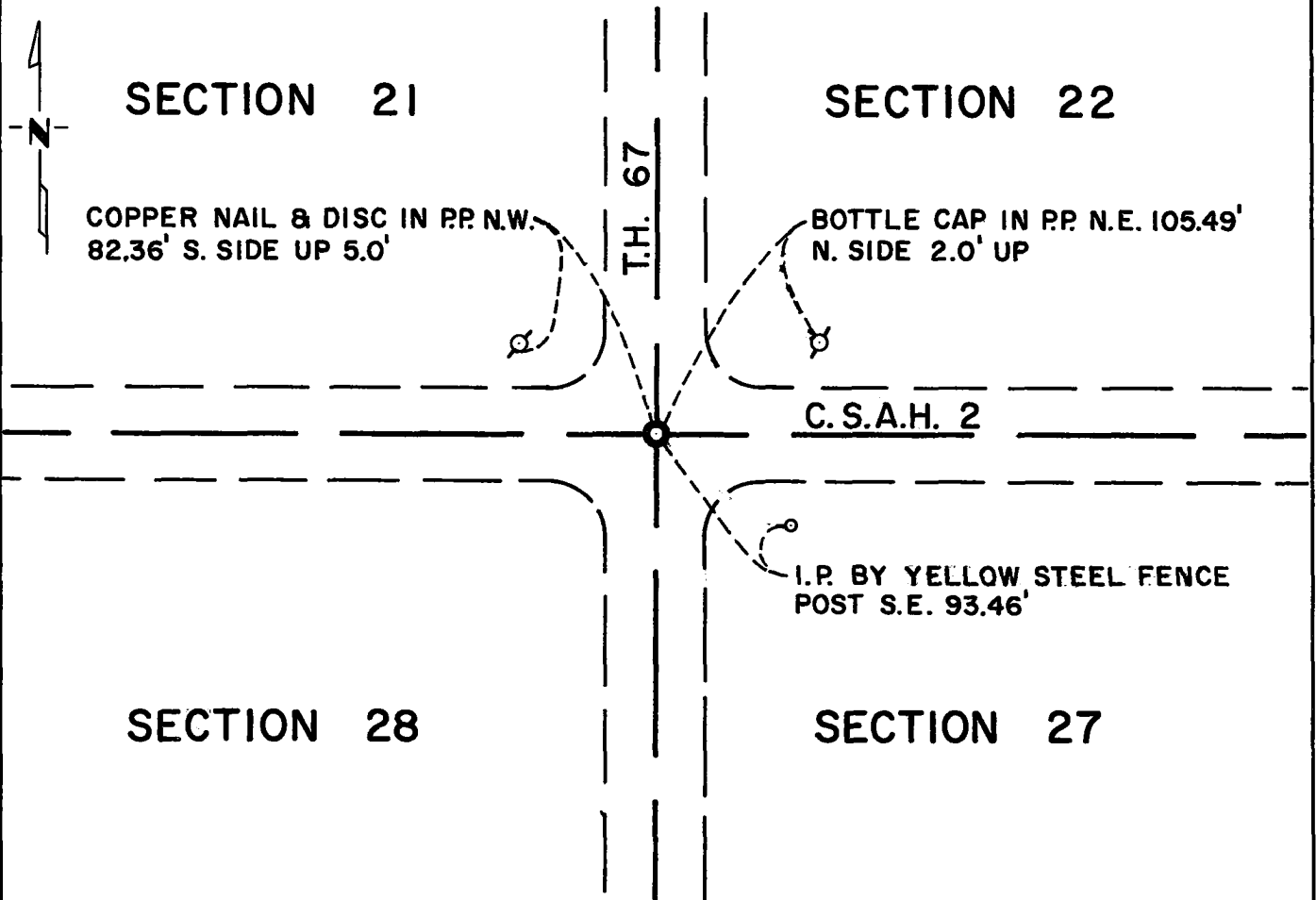
Northeast Corner of Section 28, Township 114N, Range 38W, 5th P.M.

STATE OF MINNESOTA, County of Yellow Medicine

At the corner location shown on the sketch:

- On May 6, 1975 found a 6"x6"x24" Jasper stone on centerline of north-south
DATE
T.H. 67 and east-west road. Down 2.5'
 left monument as found, lowered monument, removed monument (explain)
- On Dec. 5, 1975 placed a Minnesota Highway Department cast iron monument
DATE
down 1 inch below road surface.

SKETCH OF REFERENCE TIES



Statement of evidence relative to this corner location is on back of page.

I hereby certify that this document and the data contained herein was prepared by me or under my direct supervision.

Richard M. Knofczynski 3/9/76
SIGNATURE DATE

Registration No. 11526

- Land Surveyor, Professional Engineer
- County Surveyor, County Engineer

OFFICE OF THE REGISTER OF DEEDS
County of Yellow Medicine

RECORDED
GRANTOR
GRANTEE
INDEXED

I hereby certify that this document was filed in the Reg. of Deeds office at 9:10 A.M. on the 18 day of March A.D., 19 76

Register of Deeds Norman J. Opdahl
By Kay Nerdahl, Deputy

DOCUMENT NO. 166657

Statement of Evidence: Northeast Corner of Section 28, Township 114N, Range 38W.

The original Public Land Survey was run in 1864 and a post set in a mound with pits to mark the corner.

In 1891, Jonah Peterman found the original government corner but did not indicate the type of monument found.

In 1901, John Norgaard found a stone and placed a jasper monument to mark the corner.

In 1911, John Norgaard again found the corner.

In 1941, the MHD found a stone monument in place.

On May 6, 1975, the Minnesota Highway Department found a 6"x6"x24" jasper monument.

The origin of the stone could not be determined.

An analysis of the record data indicates that the jasper monument is in the accepted location of the Public Land Survey corner.