

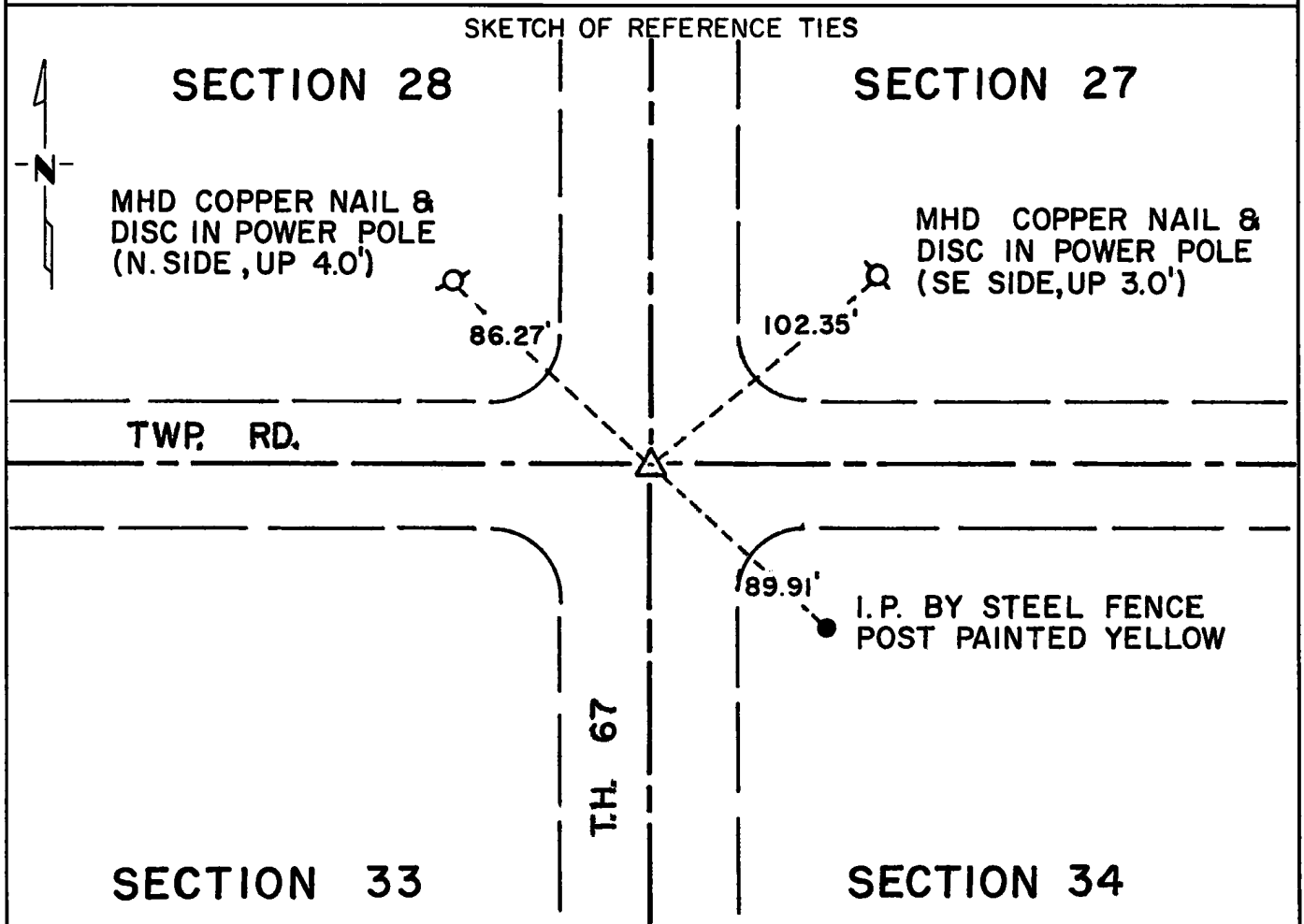
CERTIFICATE OF LOCATION OF GOVERNMENT CORNER

Northeast Corner of Section 33, Township 114N, Range 38W, 5th P.M.

STATE OF MINNESOTA, County of Yellow Medicine

At the corner location shown on the sketch:

- On May 6, 1975 found a 6"x6"x24" Jasper stone on centerline of T.H. 67 and
DATE
E-W Twp. Road. Down 4'.
- left monument as found, lowered monument, removed monument (explain)
- On Dec. 5, 1975 placed a Minnesota Highway Department cast iron monument
DATE
down 1 inch below road surface.



Statement of evidence relative to this corner location is on back of page.

I hereby certify that this document and the data contained herein was prepared by me or under my direct supervision.

Richard M. Koslowski 3/9/76
SIGNATURE DATE

Registration No. 11526

- Land Surveyor, Professional Engineer
- County Surveyor, County Engineer

OFFICE OF THE REGISTER OF DEEDS
County of Yellow Medicine



I hereby certify that this document was filed in the Reg. of Deeds office at 9:15 A.M. on the 18 day of March, A.D., 1976

Register of Deeds Norman J. Opahl

By Kay Nordahl, Deputy

DOCUMENT NO. 166658

Statement of Evidence: Northeast Corner Section 33, Township 114 North, Range 38 West

The original Public Land Survey was run in 1864 and a post set in a mound with pits to mark the corner.

In 1891, Jonah Peterman found the government mound.

In 1908, John Norgaard set a jasper monument at the intersection of a north-south-east-west road intersection.

In 1911 John Norgaard found the jasper stone in place.

In 1941, the MHD found a wood stake with no mention of a stone monument.

On May 6, 1975, the Minnesota Highway Department found a 6"x6"x24" jasper monument on centerline of north-south highway and centerline of east-west township road.

An analysis of the record data indicates that the jasper monument set by John Norgaard in 1901 is in the accepted location of the Public Land Survey corner.