

CERTIFICATE OF LOCATION OF GOVERNMENT CORNER

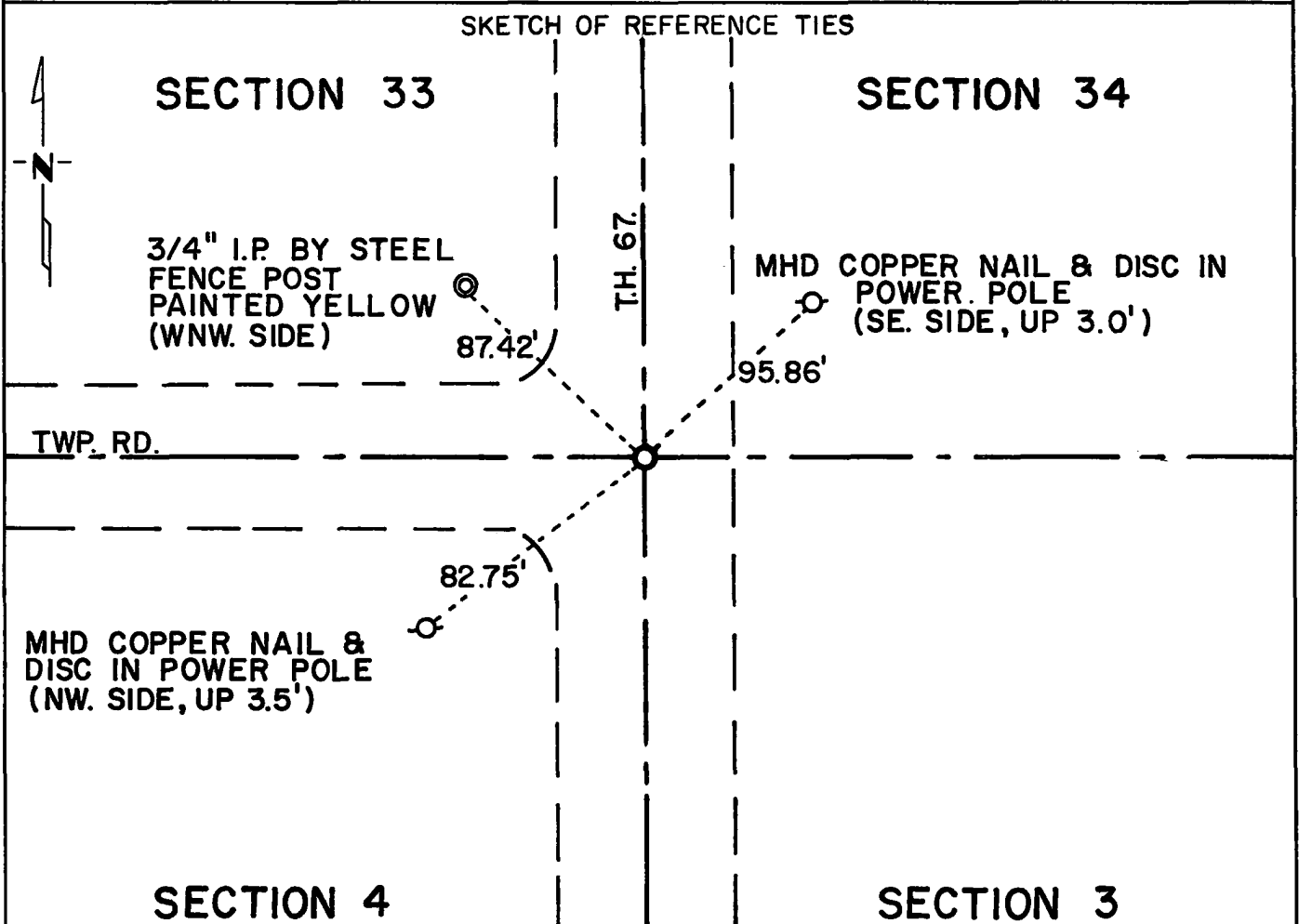
Northeast Corner of Section 4, Township 113N, Range 38W, 5th P.M.

STATE OF MINNESOTA, County of Yellow Medicine

At the corner location shown on the sketch:

- On May 6, 1975 found a 2x2 hub over a 6"x6"x24" Jasper stone on centerline
DATE
of T.H. 67 and Twp. Rd. E-W, down 4'.
 - left monument as found, lowered monument, removed monument (explain)

- On Dec. 5, 1975 placed a Minnesota Highway Department cast iron monument
DATE
down 1 inch below road surface.



Statement of evidence relative to this corner location is on back of page.

I hereby certify that this document and the data contained herein was prepared by me or under my direct supervision.

Richard M. Koskynen 3/9/76
SIGNATURE DATE

Registration No. 11526
 Land Surveyor, Professional Engineer
 County Surveyor, County Engineer

OFFICE OF THE REGISTER OF DEEDS
 County of Yellow Medicine

RECORDED
 GRANTOR
 GRANTEE
 INDEX

I hereby certify that this document was filed in the Reg. of Deeds office at 9:20 A.M. on the 18 day of March A.D., 19 76

Register of Deeds Norman J. Opdahl
 By Kay Nordahl, Deputy

DOCUMENT NO. 166659

Statement of Evidence: Northeast Corner Section 4, Township 113N, Range 38W.

The original Public Land Survey for township lines was run in 1858 and a charred stake set in a mound with pits to mark the corner.

In 1891, Jonah Peterman found the original mound and set a stake to mark the corner.

In 1901, John Norgaard found the stone and placed a jasper monument to mark the corner.

In 1941, the MHD found a wood stake with no mention of finding a stone monument.

On May 6, 1975, the Minnesota Highway Department found a 6"x6"x24" jasper monument with wood stake above it to mark the corner.

An analysis of the record data indicates that the jasper monument is in the accepted location of the Public Land Survey corner.