

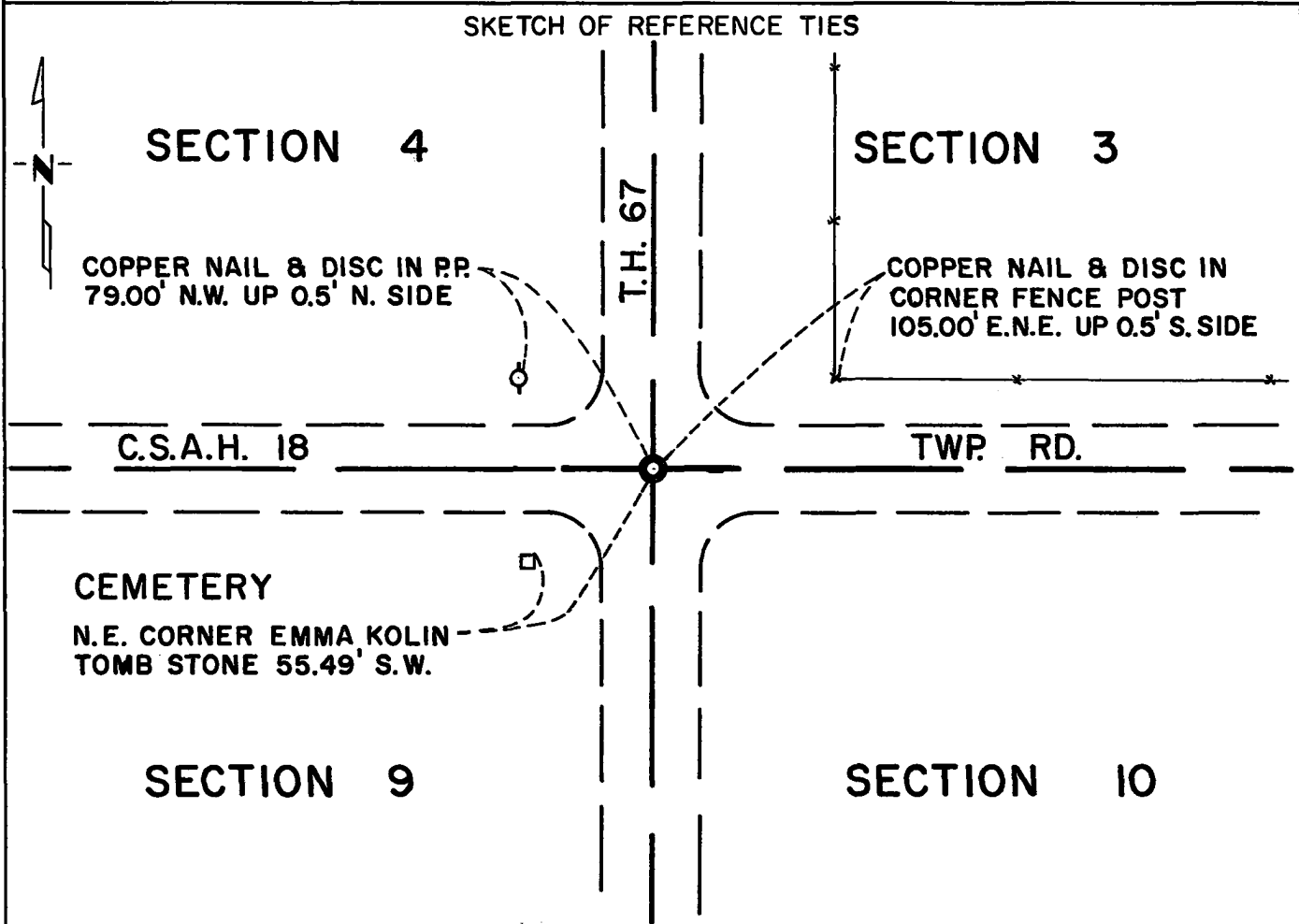
CERTIFICATE OF LOCATION OF GOVERNMENT CORNER

Northeast Corner of Section 9, Township 114N, Range 38W, 5th P.M.

STATE OF MINNESOTA, County of Yellow Medicine

At the corner location shown on the sketch:

- On May 7, 1975 found a 6"x6"x24" Jasper monument on centerline of T.H. 67
DATE
and east-west road, down 1.5 feet.
 - left monument as found, lowered monument, removed monument (explain)
- On Dec. 4, 1975 placed a Minnesota Highway Department cast iron monument
DATE
down 1 inch below road surface.



Statement of evidence relative to this corner location is on back of page.

I hereby certify that this document and the data contained herein was prepared by me or under my direct supervision.

Richard M. Kosfaynchik 3/9/76
SIGNATURE DATE

Registration No. 11526
 Land Surveyor, Professional Engineer
 County Surveyor, County Engineer

OFFICE OF THE REGISTER OF DEEDS
 County of Yellow Medicine

I hereby certify that this document was filed in the Reg. of Deeds office at 9:25 A.M. on the 18 day of March A.D., 1976

Register of Deeds Norman J. Optahl
 By Kay Nordahl, Deputy
 DOCUMENT NO. 166660

RECORDED
GRANTOR
GRANTEE
INDEXED

Statement of Evidence: Northeast Corner Section 9, Township 114N, Range 38 W.

The original Public Land Survey was run in 1864 and a post set in a mound with pits to mark the corner.

In 1901, John Norgaard found a stone set by adjoining land owners and set a jasper monument to mark the corner.

In 1941, the MHD found a stone monument in place.

On May 6, 1975, the Minnesota Highway Department found a 6"x6"x24" jasper monument.

The origin of the stone could not be determined.

An analysis of the record data indicates that the jasper monument is in the accepted location of the Public Land Survey corner.