

CERTIFICATE OF LOCATION OF GOVERNMENT CORNER

Northeast Corner of the NW 1/4 of the NE 1/4 of Section 4, Township 115N, Range 39W, 5th P.M.

STATE OF MINNESOTA, County of Yellow Medicine

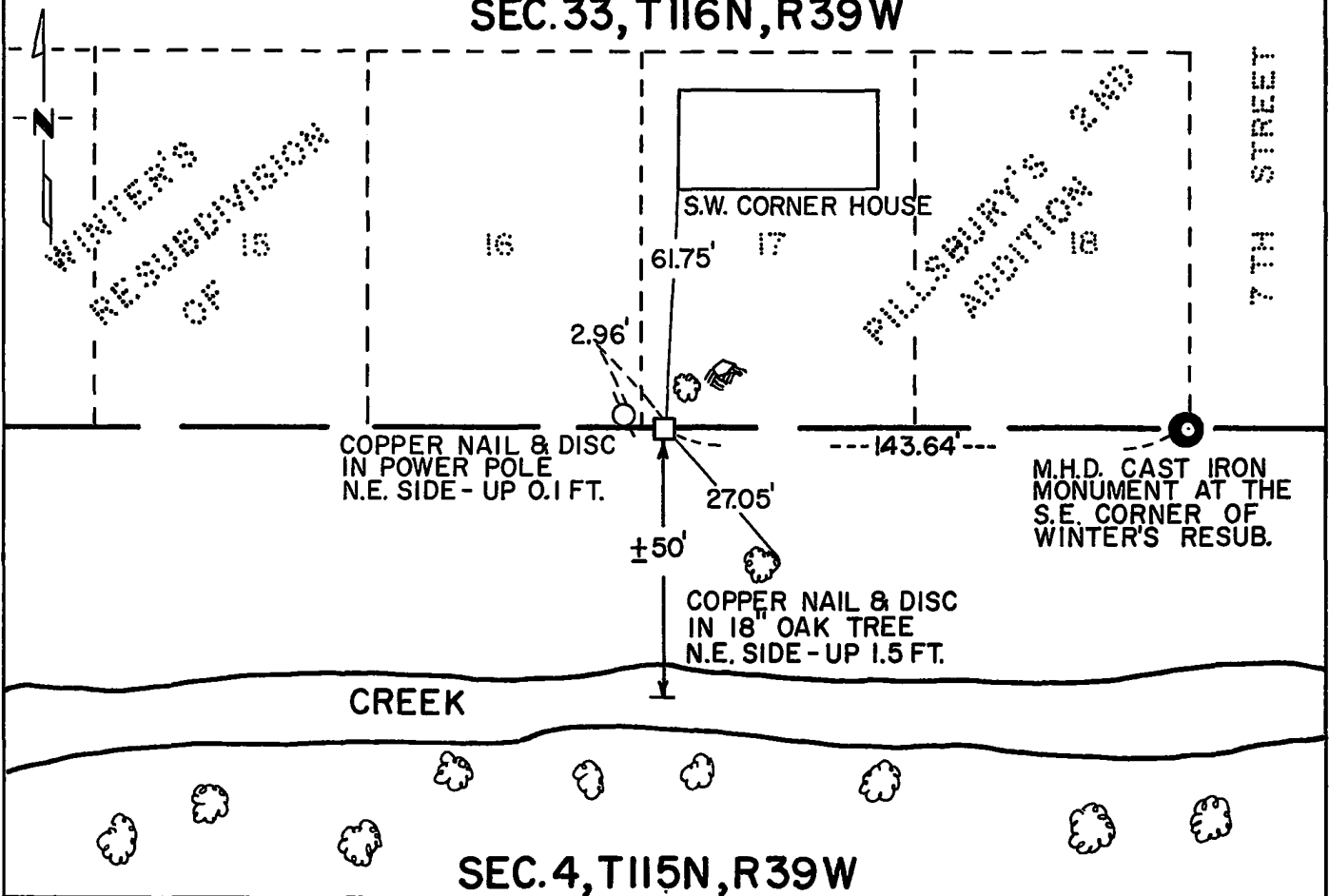
At the corner location shown on the sketch:

On Oct. 17, 1973 found a 8 inch by 6 inch by 24 inch stone at ground surface.
DATE

left monument as found, lowered monument, removed monument (explain)

On _____ placed a _____
DATE

SKETCH OF REFERENCE TIES SEC. 33, T116N, R39W



Statement of evidence relative to this corner location is on back of page.

RECORDED
GRANTOR
GRANTEE
INDEXED

I hereby certify that this document and the data contained herein was prepared by me or under my direct supervision.

Robert C Jones SIGNATURE 4/6/1976 DATE

Registration No. 11864

Land Surveyor, Professional Engineer
 County Surveyor, County Engineer

OFFICE OF THE REGISTER OF DEEDS
County of Yellow Medicine

I hereby certify that this document was filed in the Reg. of Deeds office at 9:20 A.M. on the 19 day of APRIL A.D., 1976

Register of Deeds Norman J. Opdahl

By Kay Nordahl, Deputy

DOCUMENT NO. 166807

Statement of Evidence: Northeast Corner of the NW $\frac{1}{4}$ of the NE $\frac{1}{4}$ Sec. 4, T115N, R39W.

- 1858 - The Public Land Survey of the township line was completed by W. J. Neely. This corner was not set in the original Public Land Survey.
- 1878 - The original plat of Pillsbury's Second Addition to the City of Granite Falls shows the distance from the north quarter corner to the 1/16th corner to be 1299.06 feet and a distance of 143.53 feet from the 1/16th corner to the southeast corner of Block 52. It is not known what type of monument marked the corner at that time.
- 1911 - John Norgaard, County Surveyor, found the 1/16th corner as located by him some time previous to 1911. His notes did not indicate what type of monument was marking the corner. His survey shows the distance from the north quarter corner to the 1/16th corner to be 1300.00 feet.
- 1973 - A Minnesota Highway Department survey crew found an 8 inch by 6 inch by 24 inch stone at the ground surface. The stone is laying on the long side and appears that it had been tipped over. The electronic distance from the center of the stone in its present position to the north quarter corner is 1297.59 feet and from the stone to the southeast corner of Winter's Re-subdivision (which is the same as the southeast corner of Block 52, Pillsbury's Second Addition) is 143.64 feet. There is a Minnesota Highway Department cast iron monument in place at the southeast corner of Winter's Re-subdivision which was set by Arbie Nelson, Registered Land Surveyor, according to the plat in 1968. It is not known when the stone was set to mark the 1/16th corner.

The stone is accepted as the location of the northeast corner of the NW $\frac{1}{4}$ of the NE $\frac{1}{4}$ of Section 4 because it so nearly fits the position shown in these old surveys.

For details of survey analysis and 1973 electronic survey measurements, see Survey Report for S.P. 8701 from the Yellow Medicine River to Granite Falls on file in the Surveys Section, Minnesota Highway Department, Willmar, Minn. 56201.