

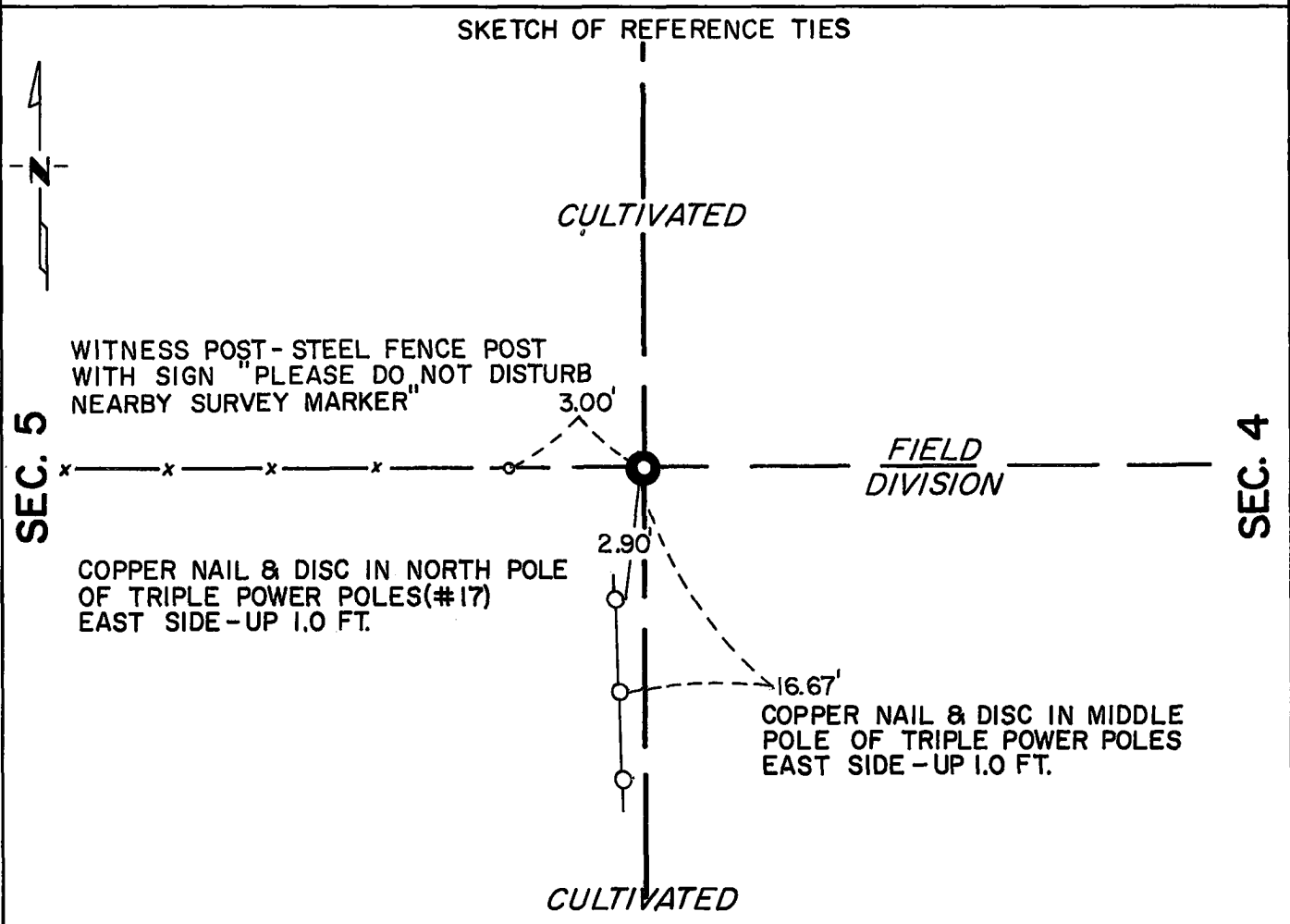
# CERTIFICATE OF LOCATION OF GOVERNMENT CORNER

East Quarter Corner of Section 5, Township 115N, Range 39W, 5th P.M.

STATE OF MINNESOTA, County of Yellow Medicine

At the corner location shown on the sketch:

- On Sept. 18, 1973 found a 1 1/2" outside diameter pipe - the top was 1.0 ft.  
DATE  
above the surface of the ground.
  - left monument as found,  lowered monument,  removed monument (explain)
  
- On Apr. 5, 1976 placed a Minnesota Highway Department cast iron monument  
DATE  
with brass plate stamped E 1/4 Cor. Sec. 5, T115N, R39W.



Statement of evidence relative to this corner location is on back of page.

I hereby certify that this document and the data contained herein was prepared by me or under my direct supervision.

Robert C Jones 4/6/1976  
SIGNATURE DATE

Registration No. 11864  
 Land Surveyor,  Professional Engineer  
 County Surveyor,  County Engineer

OFFICE OF THE REGISTER OF DEEDS  
 County of Yellow Medicine

I hereby certify that this document was filed in the Reg. of Deeds office at 9:30 A.M. on the 19 day of APRIL A.D., 19 76

Register of Deeds Norman J. Opdahl  
 By Kay Nordahl, Deputy

DOCUMENT NO. 166809

RECORDED  
 GRANTED  
 GRANTEE  
 INDEXED

Statement of Evidence: East Quarter Corner Sec. 5, T115N, R39W

- 1864 - The original Public Land Survey was completed in 1864 by Charles E. Davis and J. W. Webb Jr. A wood post was set in a mound of dirt with trenches and pits to mark the corner.
- 1911 - John Norgaard, County Surveyor, found a stone and iron marking the corner. His survey shows the distance from the quarter corner to the southeast corner of the section to be 2600 feet and from the quarter corner to the northeast corner of the section to be 2650 feet.
- 1972 - Willard Pellinen, Registered Land Surveyor, set a 1½ inch outside diameter by 24 inch long iron pipe to mark the corner. It was set according to a survey of Section 5 and six parcels of land are described from this corner.
- 1973 - A Minnesota Highway Department survey crew found the 1½ inch diameter by 24 inch long iron pipe projecting one foot above the ground. An 8 inch by 12 inch stone was laying on top of the ground about 2 feet away from the pipe. It was the only stone in the area. The iron pipe was referenced out and pulled out. A search was made with a metal locator and a tile probe at the location of the pipe but nothing was found and the pipe was placed in its original position. A search was made at the lost location which is 0.90 feet east and 12.48 feet south of the iron pipe. An excavation 3 feet north, 3 feet south, 4 feet east and 2 feet west of the lost location was made to a depth of 3 feet. A thorough search was made at the bottom of the excavation with a metal locator and a tile probe to a depth of about 6 feet but nothing was found.
- 1976 - The iron pipe is accepted as the location of the government corner. The location is on an east/west field division and lines in with an east/west fence about 30 feet to the west and a north/south fence about 500 feet to the north. It also fits, within 2½ feet, an old survey that John Norgaard made for Hillcrest Cemetery in 1911. On April 5, 1976 the iron pipe was removed and replaced by a Minnesota Highway Department cast iron monument with a brass plate stamped E¼ Cor. Sec. 5, T115N, R39W.

For details of survey analysis and 1973 electronic measurements, see Survey Report for S.P. 8701 from the Yellow Medicine River to Granite Falls on file in the Surveys Section, Minnesota Highway Department, Willmar, Minn. 56201.