

# CERTIFICATE OF LOCATION OF GOVERNMENT CORNER

East Quarter \_\_\_\_\_ Corner of Section 17, Township 115N, Range 39W, 5th P.M.  
 STATE OF MINNESOTA, County of Yellow Medicine

At the corner location shown on the sketch:

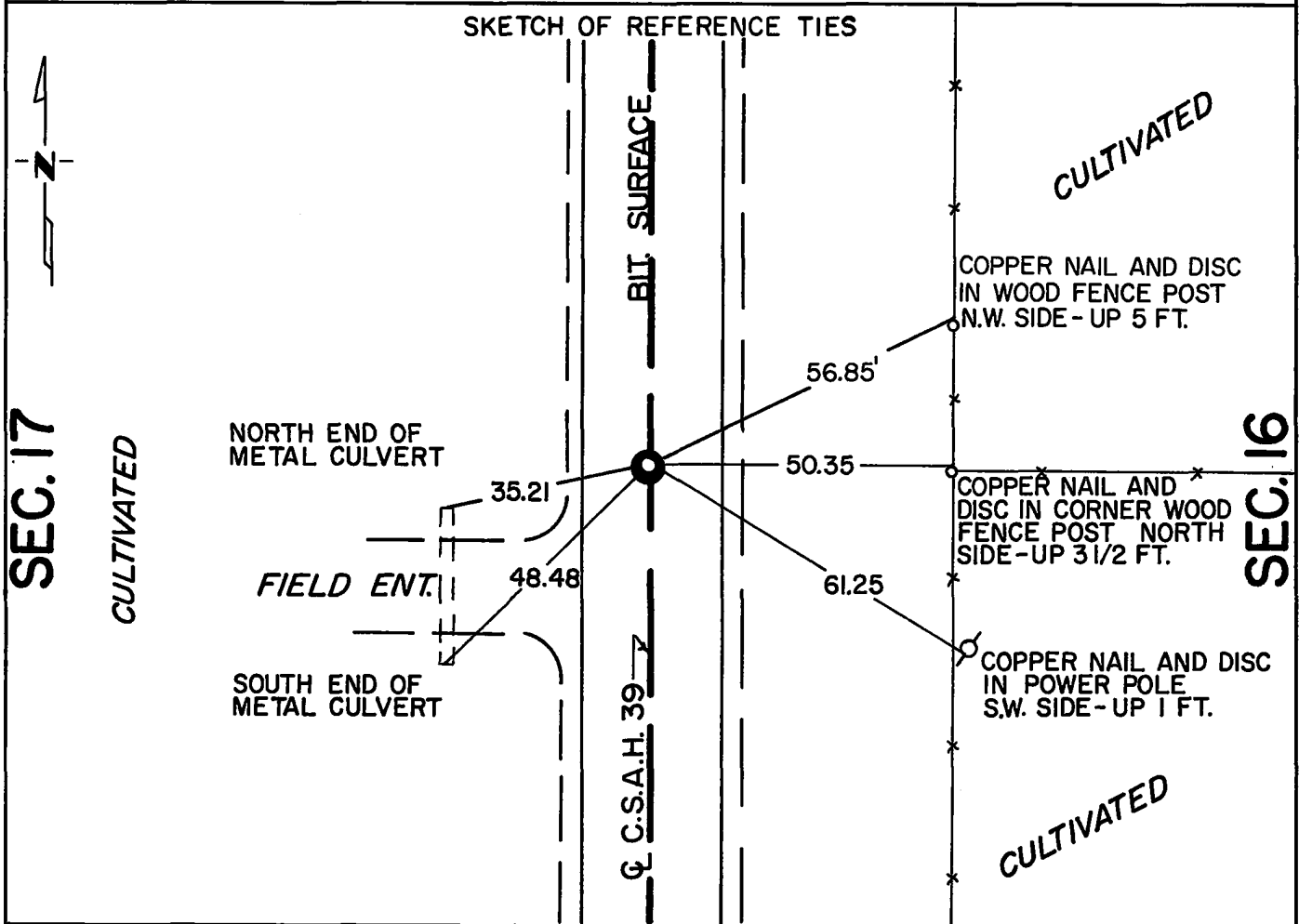
- On April 28, 1976 found a 5"x10"x18" pointed stone 2½ feet below road surface.  
DATE

---

- left monument as found,  lowered monument,  removed monument (explain)

---

- On April 28, 1976 placed a Minnesota Highway Department cast iron monument  
DATE stamped E½ Cor. Sec. 17 - 1½" below road.



Statement of evidence relative to this corner location is on back of page.

I hereby certify that this document and the data contained herein was prepared by me or under my direct supervision.

Robert C Jones 4/30/1976  
SIGNATURE DATE

Registration No. 11864  
 Land Surveyor,  Professional Engineer  
 County Surveyor,  County Engineer

OFFICE OF THE REGISTER OF DEEDS  
 County of Yellow Medicine

RECORDED  
 GRANTOR  
 GRANTEE  
 INDEXED

I hereby certify that this document was filed in the Reg. of Deeds office at 9:00 A.M. on the 10 day of MAY A.D., 19 76

Register of Deeds Norman J. Opdahl  
 By Kary Nordahl, Deputy  
 DOCUMENT NO. 166947

Statement of Evidence: East Quarter Cor. Sec. 17, T115N, R39W

1864 - The original Public Land Survey was completed in 1864 by Charles E. Davis and J. W. Webb Jr. A wood post was set in a dirt mound with trenches and pits to mark the corner.

1901 - John Norgaard, County Surveyor, found a stone in a road marking the corner. He stated that this stone was used as the corner in subsequent surveys between 1901 and 1911. There is no record of these surveys so his distance from the quarter corner to either section corner is not known.

1937 - Notes in the County Engineer's Office show the distance from the southeast corner to the northeast corner of the section as being 5324.9 feet.

1976 - A Minnesota Highway Department survey crew excavated for this corner. A hole 2 feet by 5 feet by  $2\frac{1}{2}$  feet deep was dug. An old road bed was found 2.3 feet below the present road surface. A 5"x10"x18" stone was found 2.5 feet below the present road surface. The top of the stone is pointed. A cast iron monument stamped E $\frac{1}{4}$  Cor. Sec. 17 was placed above the stone and  $1\frac{1}{2}$ " below the road surface. The found stone is 0.2 feet west of the lost location on the centerline of the north/south county road and 1 foot north of an east/west fence line east.

The found stone is accepted as the location of the government corner because it so closely fits the lost location and occupation lines and has marked the location of the corner for at least 75 years.

For details of survey analysis and 1976 electronic survey measurements, see Survey Report for S.P. 8701-18 from 0.3 miles North of the Yellow Medicine River to Granite Falls on file in the Surveys Section, Minnesota Highway Department, Willmar, Minn. 56201.