

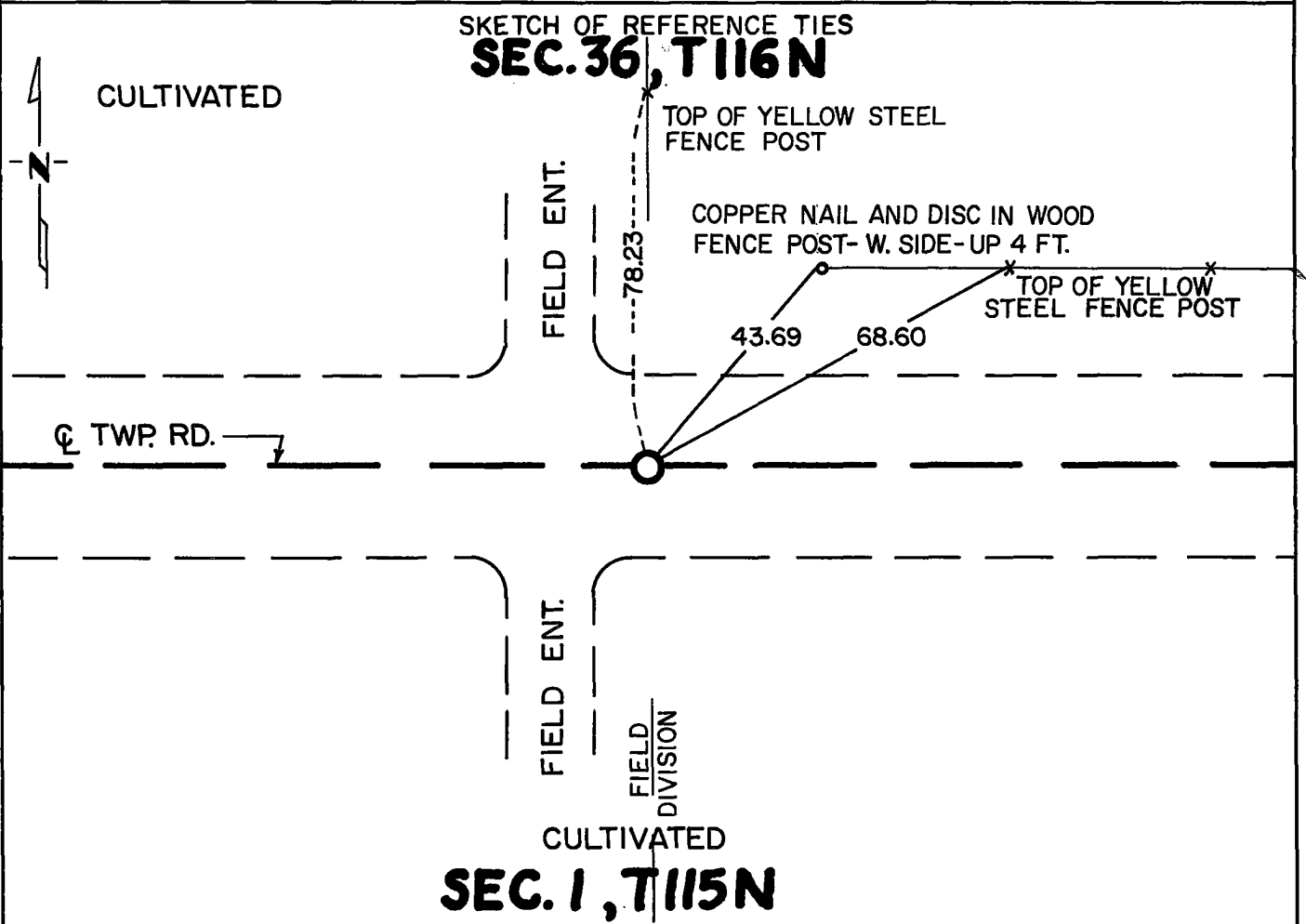
# CERTIFICATE OF LOCATION OF GOVERNMENT CORNER

North Quarter Corner of Section 1, Township 115N, Range 40W, 5th P.M.

STATE OF MINNESOTA, County of Yellow Medicine

At the corner location shown on the sketch:

- On Apr. 29, 1976 found a 6"x6"x12" stone, 2.3 feet below the present road surface in natural ground.  
DATE
- left monument as found,  lowered monument,  removed monument (explain)
- On Apr. 29, 1976 placed a Minnesota Highway Department cast iron monument 4" below the road surface.  
DATE



Statement of evidence relative to this corner location is on back of page.

I hereby certify that this document and the data contained herein was prepared by me or under my direct supervision.

Robert C. Jones SIGNATURE      5/4/76 DATE

Registration No. 11864

- Land Surveyor,  Professional Engineer
- County Surveyor,  County Engineer

OFFICE OF THE REGISTER OF DEEDS  
County of Yellow Medicine

RECORDED  
GRANTOR  
GRANTEE  
INDEXED

I hereby certify that this document was filed in the Reg. of Deeds office at 9:15 A.M. on the 27 day of May A.D., 1976

Register of Deeds Norman J. Opdahl

By Kay Nordahl, Deputy

DOCUMENT NO. 167056

Statement of Evidence: North Quarter Cor. Sec. 1, T115N, R40W

- 1858 - The original Public Land Survey of the township line was completed by W. J. Neeley. A wood post was set over deposited coal in a dirt mound with trenches and pits to mark the corner.
- 1913 - John Norgaard, County Surveyor, set a stone on line and equal distances between section corners to mark the quarter corner for a survey of Section 36, T116N, R40W.
- 1915 - John Norgaard used the same stone for a survey in Section 1.
- 1976 - A Minnesota Highway Department survey crew excavated a 3 foot by 6 foot by 2½ foot deep hole and found a 6"x6"x12" stone marking the corner. It is 2.3 feet below the present road surface and about 2 inches below an old road bed in natural ground. The stone is at the centerline of an east/west road, 2 feet east of a north/south fence line north and on line with a north/south field division south.

The stone is accepted as the location of the government corner because it fits occupation lines and has marked the corner for 63 years.

A Minnesota Highway Department cast iron monument was set above the stone and 4 inches below the road surface.

For details of survey analysis and 1976 electronic measurements, see the survey report for S.P. 8702 and S.P. 8706, Jct. T.H. 23 and T.H. 67, 3 miles S.W. of Granite Falls, on file with the Surveys Section, Minnesota Highway Department, Willmar, Minn. 56201.