

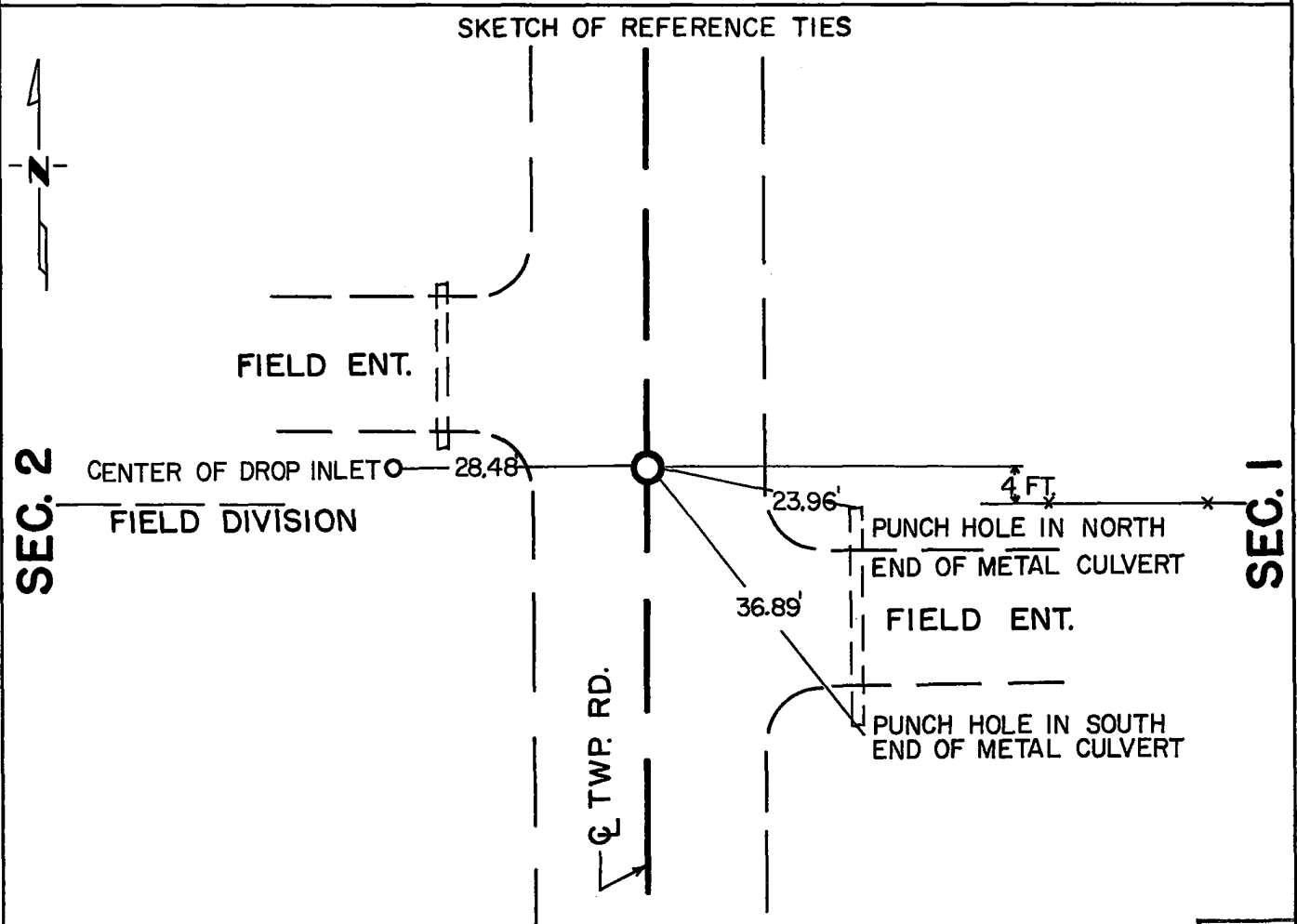
CERTIFICATE OF LOCATION OF GOVERNMENT CORNER

East Quarter _____ Corner of Section 2, Township 115N, Range 40W, 5th P.M.

STATE OF MINNESOTA, County of Yellow Medicine

At the corner location shown on the sketch:

- On Apr. 28, 1976 found a nothing.
DATE
- left monument as found, lowered monument, removed monument (explain)
- On Apr. 28, 1976 placed a Minnesota Highway Department cast iron monument
DATE
stamped E $\frac{1}{2}$ Cor. Sec. 2.



Statement of evidence relative to this corner location is on back of page.

RECORDED
GRANTOR
GRANTEE
INDEXED

I hereby certify that this document and the data contained herein was prepared by me or under my direct supervision.

Robert C Jones 5/4/76
SIGNATURE DATE

Registration No. 11864
 Land Surveyor, Professional Engineer
 County Surveyor, County Engineer

OFFICE OF THE REGISTER OF DEEDS
 County of Yellow Medicine

I hereby certify that this document was filed in the Reg. of Deeds office at 9:20 A.M. on the 27 day of May A.D., 1976

Register of Deeds Norman J. Opdahl
 By Roy Nerdahl, Deputy
 DOCUMENT NO. 167057

Statement of Evidence: East Quarter Cor. Sec. 2, T15N, R40W

1864 - The original Public Land Survey was completed by C. E. Davis and J. W. Webb, Jr. A wood post was set in a dirt mound with trenches and pits to mark the corner.

There is no record evidence that anything has been set to mark the corner since the original Public Land Survey.

1976 - A Minnesota Highway Department survey crew excavated a 5 foot by 9 foot by 4½ foot deep hole to natural ground at the intersection of the centerline of a north/south township road and an east/west fence line east and a field division line west. Nothing was found marking the corner. The hole extended 2 feet north, 7 feet south and 2.5 feet east and west of the lost location. A Minnesota Highway Department cast iron monument stamped E¼ Cor. Sec. 2 was set at the lost location, 3" below the road surface, at the centerline of the north/south road and 4 feet north of the east/west fence line east.

For details of survey analysis and 1976 electronic measurements, see the survey report for S.P. 8702 and S.P. 8706, Jct. T.H. 23 and T.H. 67, 3 miles S.W. of Granite Falls, on file with the Surveys Section, Minnesota Highway Department, Willmar, Minn. 56201.