

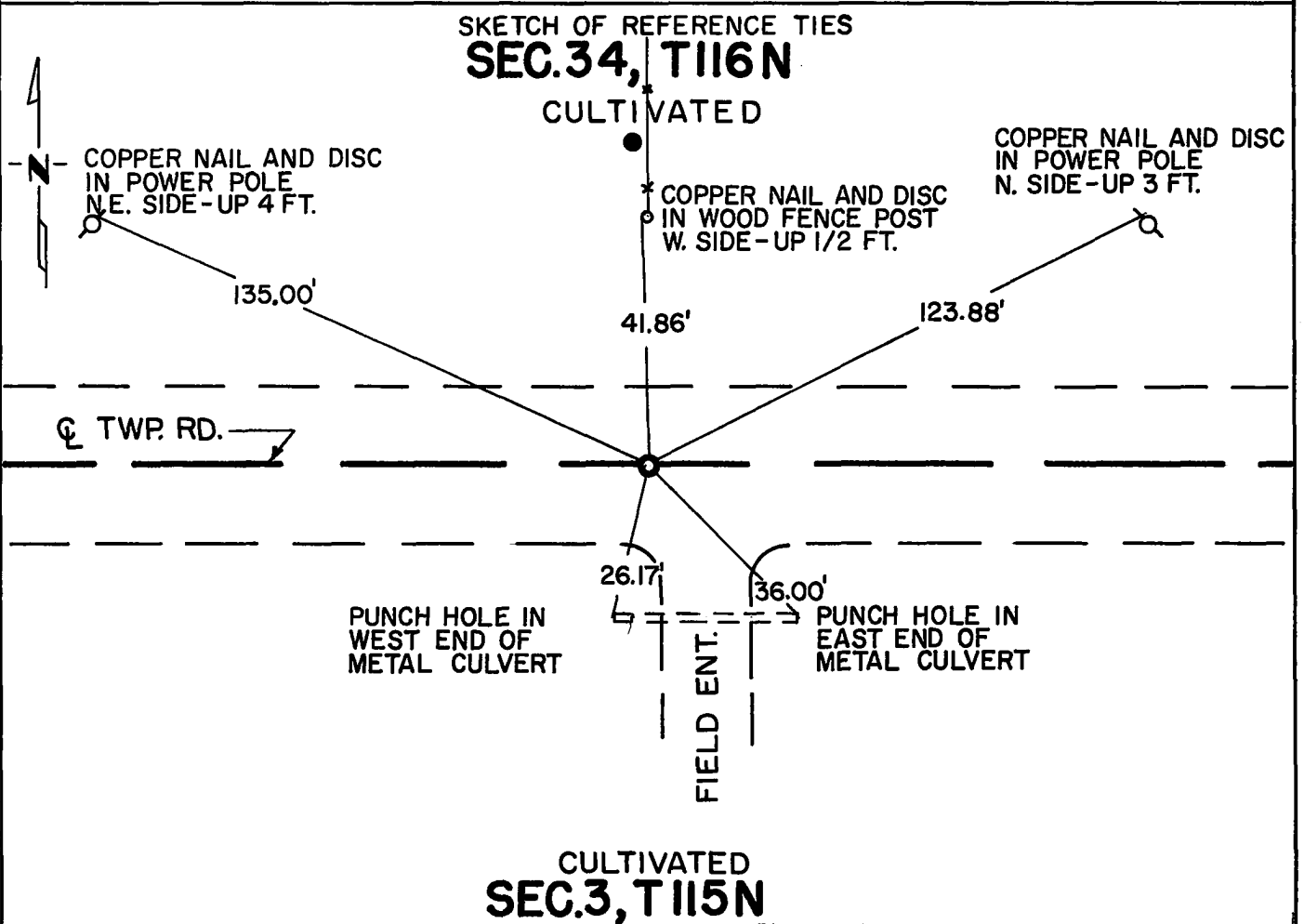
# CERTIFICATE OF LOCATION OF GOVERNMENT CORNER

North Quarter \_\_\_\_\_ Corner of Section 3, Township 115N, Range 40W, 5th P.M.

STATE OF MINNESOTA, County of Yellow Medicine

At the corner location shown on the sketch:

- On Apr. 29, 1976 found a 7"x6"x10" stone 2½ feet below the present road surface and 4" below an old road bed in natural ground.
  - left monument as found,  lowered monument,  removed monument (explain)
- On Apr. 29, 1976 placed a Minnesota Highway Department cast iron monument above the stone and 3" below road surface.



Statement of evidence relative to this corner location is on back of page.

RECORDED  
GRAN. ON  
GRAN. EV  
INDEXED

I hereby certify that this document and the data contained herein was prepared by me or under my direct supervision.

Robert Jones 5/4/76  
SIGNATURE DATE

Registration No. 11864

- Land Surveyor,  Professional Engineer
- County Surveyor,  County Engineer

OFFICE OF THE REGISTER OF DEEDS  
County of Yellow Medicine

I hereby certify that this document was filed in the Reg. of Deeds office at 9:25 A.M. on the 27 day of May A.D., 1976

Register of Deeds Norman J. Opdehl

By Kay Nordahl, Deputy

DOCUMENT NO. 167058

Statement of Evidence: North Quarter Cor. Sec. 3, T115N, R40W.

1858 - The original Public Land Survey of the township line was completed by W. J. Neeley. A wood post was set and coal was deposited in a dirt mound with trenches and pits to mark the corner.

1913 - John Norgaard, County Surveyor, set a stone midway and on line between section corners for his survey of Section 3.

1976 - A Minnesota Highway Department survey crew excavated a 3 foot by 6 foot by 2½ foot deep hole to natural ground. There is an old road bed about 2 feet below the present road surface. A 7"x6"x10" stone was found 2½ feet below the present road at the intersection of the centerline of an east/west road and a north/south fence line north. A Minnesota Highway Department cast iron monument was placed above the stone about 3" below the road surface.

The stone is accepted as the location of the government corner because it fits occupation lines and has marked the corner for 63 years.

For details of survey analysis and 1976 electronic measurements, see the survey report for S.P. 8702 and S.P. 8706, Jct. T.H. 23 and T.H. 67, 3 miles S.W. of Granite Falls, on file with the Surveys Section, Minnesota Highway Department, Willmar, Minn. 56201.