

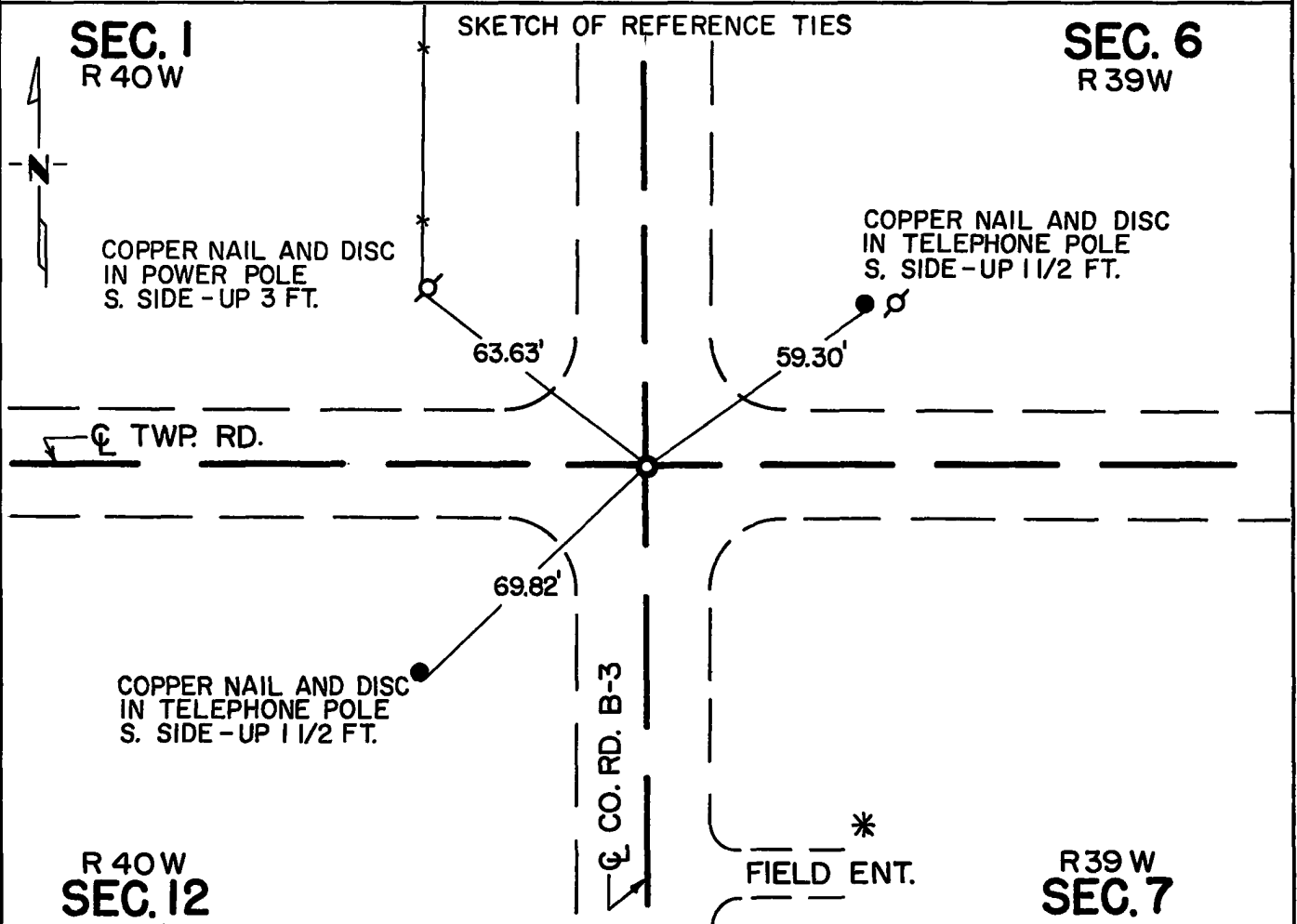
# CERTIFICATE OF LOCATION OF GOVERNMENT CORNER

Northeast Corner of Section 12, Township 115N, Range 40W, 5th P.M.

STATE OF MINNESOTA, County of Yellow Medicine

At the corner location shown on the sketch:

- On Apr. 28, 1976 found a 6"x6"x24" granite monument  
DATE
- left monument as found,  lowered monument,  removed monument (explain)
- On Apr. 28, 1976 placed a Minnesota Highway Department cast iron monument  
DATE stamped N.E. Cor. Sec. 12, T115N, R40W.



Statement of evidence relative to this corner location is on back of page.

I hereby certify that this document and the data contained herein was prepared by me or under my direct supervision.

Robert C. Jones 5/4/76  
SIGNATURE DATE

Registration No. 11864

- Land Surveyor,  Professional Engineer
- County Surveyor,  County Engineer

OFFICE OF THE REGISTER OF DEEDS  
County of Yellow Medicine

I hereby certify that this document was filed in the Reg. of Deeds office at 9:35 A.M. on the 27 day of MAY A.D., 19 76

Register of Deeds Norman J. Opdahl

By Kay Nordahl, Deputy

DOCUMENT NO. 167060

RECORDED  
GRANTOR  
GRANTEE  
INDEXED

Statement of Evidence: Northeast Cor. Sec. 12, T115N, R40W.

- 1858 - The original Public Land Survey of the township line was completed by W. J. Neeley. A wood post was set and coal was deposited in a mound of dirt with trenches and pits to mark the corner.
- 1901 - John Norgaard, the County Surveyor, found a stake in the government mound and set a 6"x6"x24" granite monument in the mound to mark the corner. He used the granite monument for subsequent surveys in 1913 and 1915. A county survey crew found the monument and set reference ties in 1939.
- 1976 - A Minnesota Highway Department survey crew excavated a 3'x5'x2½' deep hole and found a 6"x6"x24" granite monument 2.1 feet below the road surface at the surface of an old road bed.

An analysis of this data provides a continuous chain of record perpetuating the location of the original Public Land Survey corner.

For details of survey analysis and 1976 electronic measurements, see the survey report for S.P. 8702 and S.P. 8706, Jct. T.H. 23 and T.H. 67, 3 miles S.W. of Granite Falls, on file with the Surveys Section, Minnesota Highway Department, Willmar, Minn. 56201.