

CERTIFICATE OF LOCATION OF GOVERNMENT CORNER

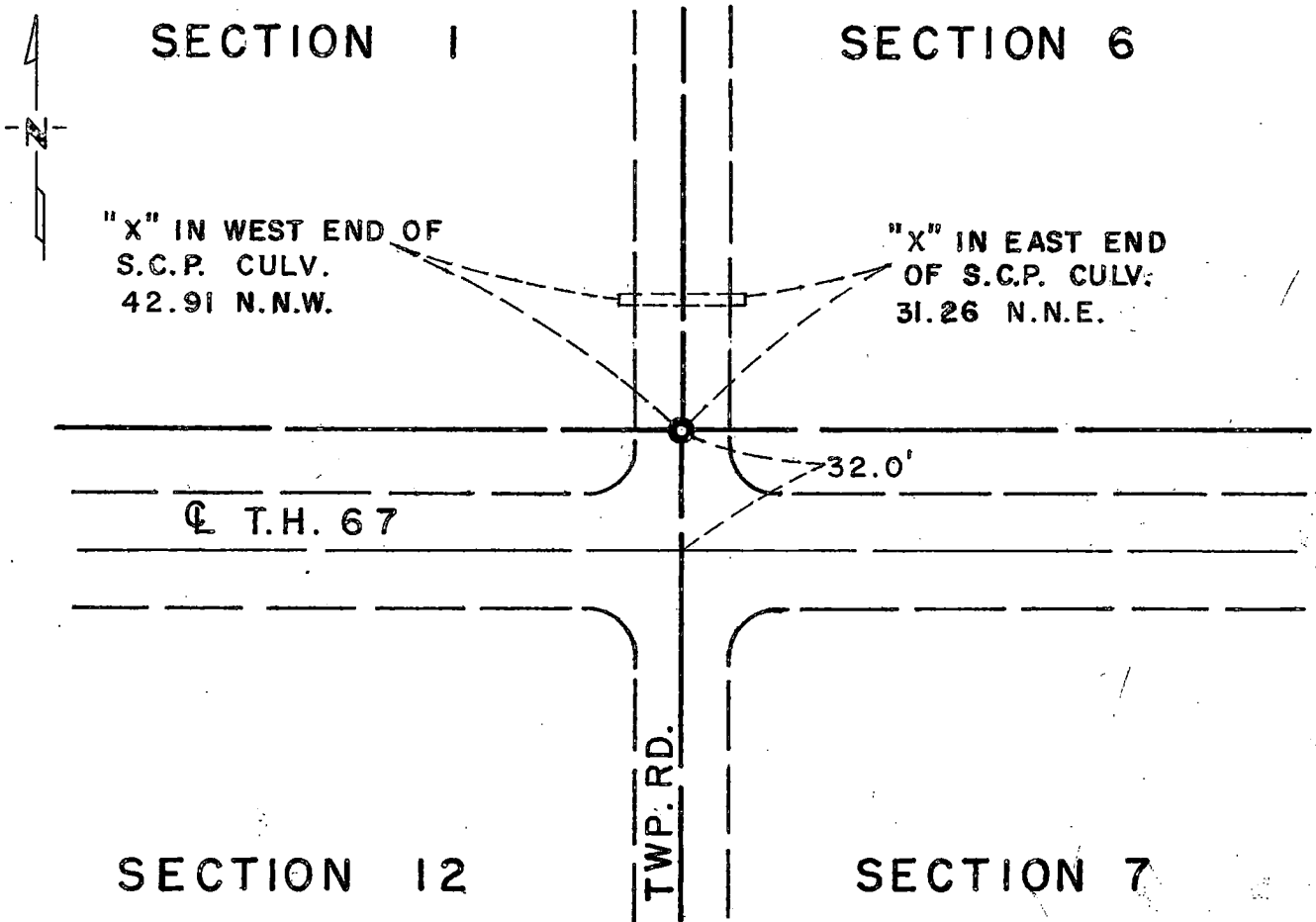
Northeast Corner of Section 12, Township 115N, Range 44W, 5th P.M.

STATE OF MINNESOTA, County of Yellow Medicine

At the corner location shown on the sketch:

- On _____ found a _____
DATE
- left monument as found, lowered monument, removed monument (explain)
- On 7/12/76 placed a Minnesota Highway Department cast iron
DATE monument 32.0' north POT Sta. 564+55.1.

SKETCH OF REFERENCE TIES



Statement of evidence relative to this corner location is on back of page.

I hereby certify that this document and the data contained herein was prepared by me or under my direct supervision.

Richard M. Knudsen 1-17-77
SIGNATURE DATE

Registration No. 11526

- Land Surveyor, Professional Engineer
- County Surveyor, County Engineer

OFFICE OF THE REGISTER OF DEEDS
County of _____ COUNTY RECORDER
YELLOW MEDICINE COUNTY

RECORDED
GRANTED
GRANTED
INDEXED

I hereby certify that this document was filed in the Reg. of Deeds office at 9:40 A.M. on the 21 day of March A.D., 1977

Register of Deeds Norman J. Opdahl

By Kay Nordahl COUNTY RECORDER
YELLOW MEDICINE COUNTY, Deputy

DOCUMENT NO. 168922

Statement of Evidence: Northeast Cor., Sec. 12, Township 115N, Range 44W

The original Public Land Survey was run in 1858 to set the township lines, and a post set with deposits of coal and made mound, trench and pits to mark the original corner.

In 1889, J. Peterman found the post.

In September 1890, J. Peterman found stone.

In 1901, J. Norgaard located corner from East 1/4 post Section 12 and 1/16 post with twice the distance. The 1/16 post was set when section was plain. Set 6"x6"x24" Jasper stone monument.

In 1929, Minnesota Highway Department field notes show the 6"x6"x24" monument was found 12" below the surface.

On July 1, 1976, the Minnesota Highway Department dug for but did not locate the monument.

On July 12, 1976, the Minnesota Highway Department placed a cast iron monument using information and ties from right-of-way map and final grading plans. Top of monument is down 2" below surface.

An analysis of the record data indicates the cast iron monument set by the Minnesota Department of Transportation is accepted as the location of the Public Land Survey corner.