

CERTIFICATE OF LOCATION OF GOVERNMENT CORNER

North 1/4 Corner of Section 11, Township 115N, Range 44W, 5th P.M.

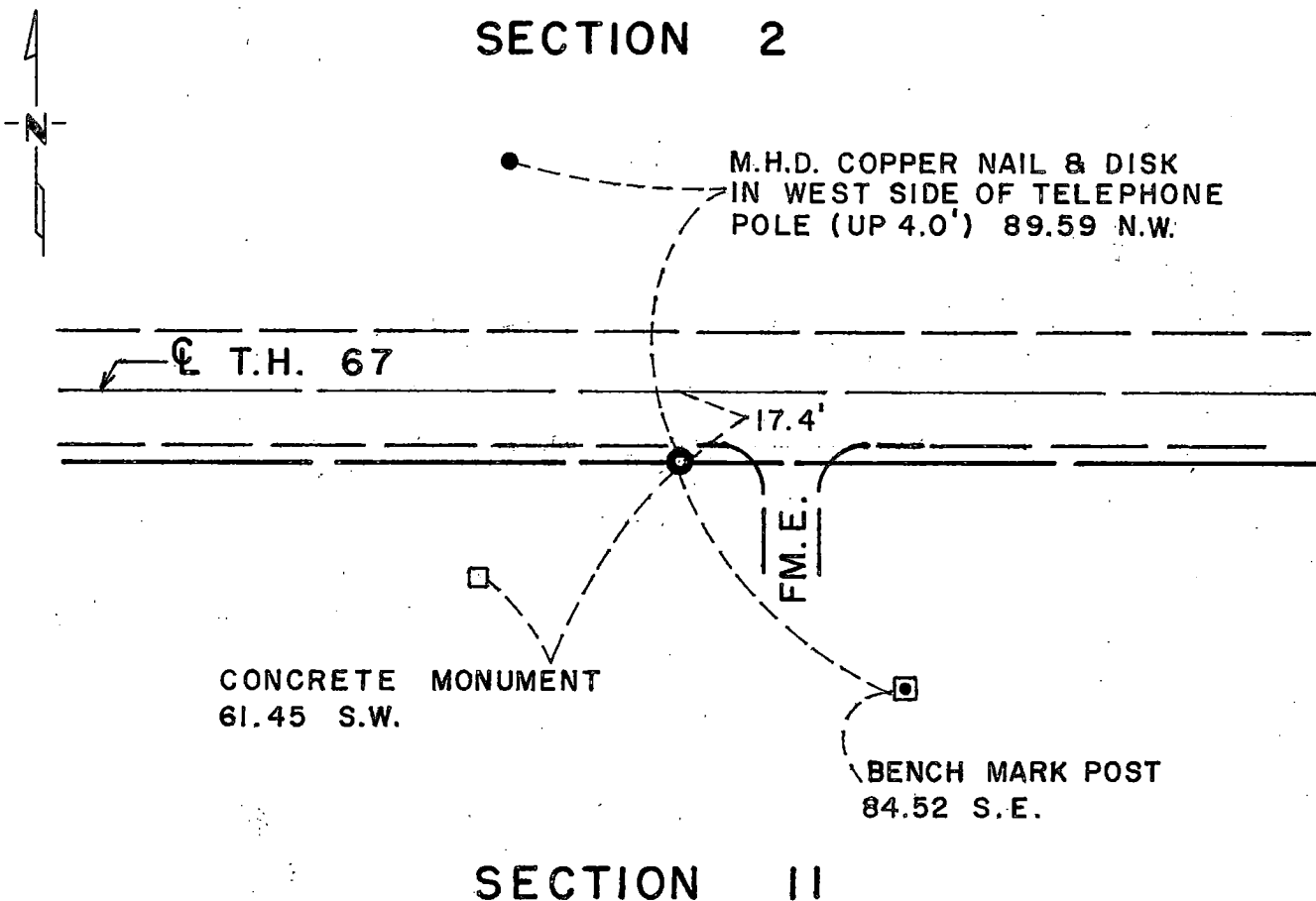
STATE OF MINNESOTA, County of Yellow Medicine

At the corner location shown on the sketch:

- On _____ found a _____
DATE
- left monument as found, lowered monument, removed monument (explain)
- On 12/16/76 placed a Minnesota Highway Department cast iron
DATE
monument with brass disk stamped.

SKETCH OF REFERENCE TIES

SECTION 2



Statement of evidence relative to this corner location is on back of page.

I hereby certify that this document and the data contained herein was prepared by me or under my direct supervision.

Richard M. Knudsen 1-17-77
SIGNATURE OF DATE

Registration No. 11526

Land Surveyor, Professional Engineer

County Surveyor, County Engineer

OFFICE OF THE REGISTER OF DEEDS
County of _____ COUNTY RECORDER
YELLOW MEDICINE COUNTY

RECORDED
GRANTOR
GRANTEE
INDEXED

I hereby certify that this document was filed in the Reg. of Deeds office at 9:50 A.M. on the 21 day of March A.D., 1977

Register of Deeds Norman J. Opdahl
COUNTY RECORDER

By Kay Nerdahl YELLOW MEDICINE COUNTY, Deputy

DOCUMENT NO. 16892A

Statement of Evidence: North 1/4 Cor. Sec. 11, Township 115N, Range 44W

The original Public Land Survey was run in 1871 and a post set in mound to mark the original corner.

In 1926, J. Norgaard, County Surveyor, found a stone between NW and NE Corners (2650-2648).

In 1929, Minnesota Highway Department field notes show a stone was found 1' below surface.

In 1959, the Minnesota Highway Department found a stone down 1' below surface.

On July 1, 1976, the Minnesota Highway Department dug for, but did not find any monument in place.

On December 16, 1976, the Minnesota Highway Department placed a cast iron monument using information and ties from right-of-way map and final grading plans. Top of monument is down 1" below surface.

An analysis of the record data indicates the cast iron monument set by the Minnesota Department of Transportation is accepted as the location of the Public Land Survey corner.

The stone monument found in 1959 was removed by road construction in 1965. The corner was re-established from data shown on the 1929 R/W map and perpetuates the location for the corner as marked by the 1929 stone.