

CERTIFICATE OF LOCATION OF GOVERNMENT CORNER

Northeast Corner of Section 9, Township 115N, Range 44W, 5th P.M.

STATE OF MINNESOTA, County of Yellow Medicine

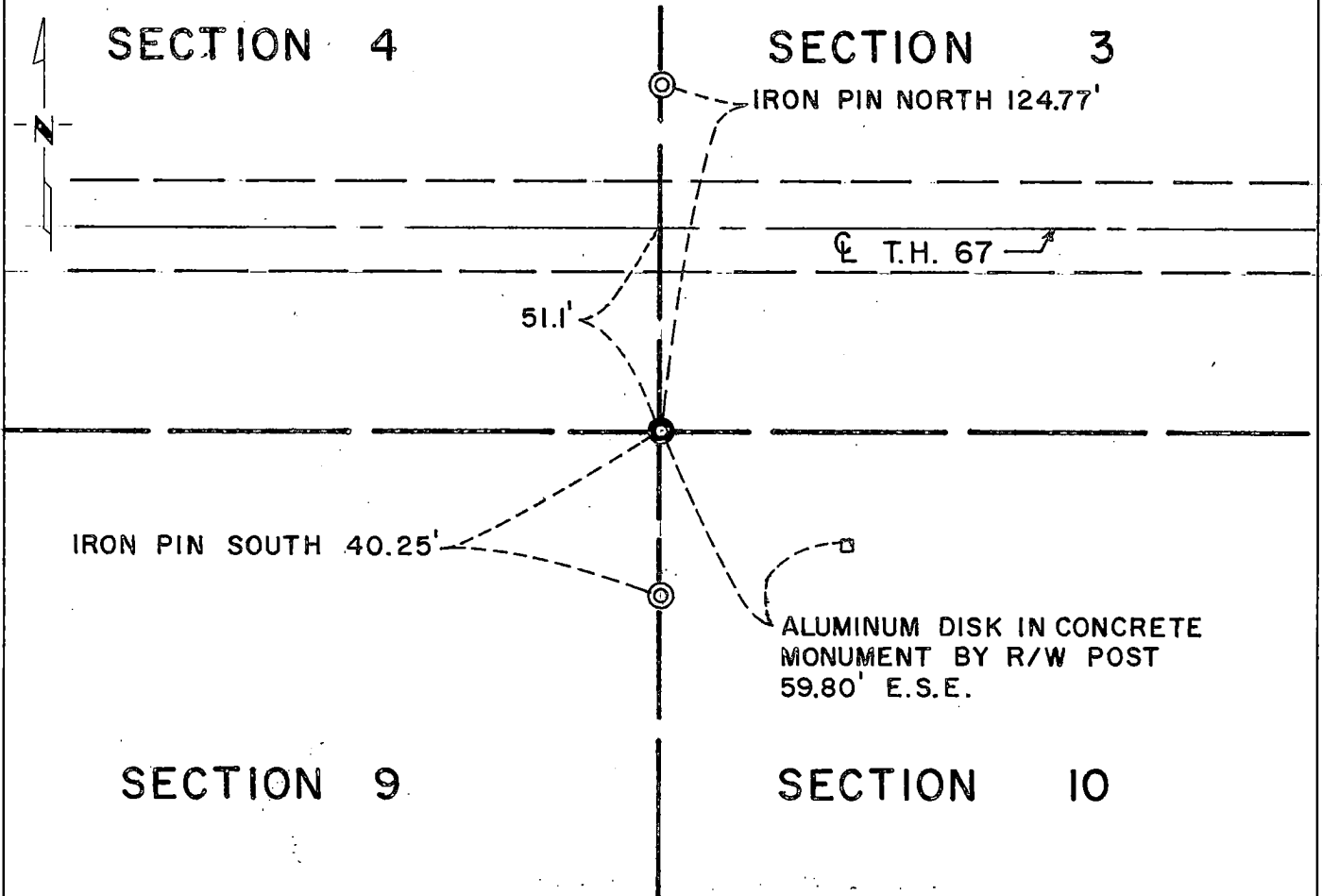
At the corner location shown on the sketch:

On 7/1/76 found a 1/2 inch iron pipe in location as shown.
DATE

left monument as found, lowered monument, removed monument (explain)

On 7/6/76 placed a Minnesota Highway Department cast iron
DATE
monument.

SKETCH OF REFERENCE TIES



Statement of evidence relative to this corner location is on back of page.

I hereby certify that this document and the data contained herein was prepared by me or under my direct supervision.

Richard M. Knofczynski 3/9/77
SIGNATURE DATE

Registration No. 11526

- Land Surveyor, Professional Engineer
- County Surveyor, County Engineer

OFFICE OF THE COUNTY RECORDER
County of Yellow Medicine

SEARCHED
GRANTED
INDEXED

I hereby certify that this document was filed in the Co. Recorders office at 9:55 A.M. on the 21 day of March A.D., 19 77

County Recorder Norman J. Opdahl

By Kary Nordahl, Deputy

DOCUMENT NO. 168925

Statement of Evidence: Northeast Cor., Sec. 9, Township 115N, Range 44W

The original Public Land Survey was run in 1871 and a post set in a mound to mark the original corner.

In 1901, John Norgaard, County Surveyor, found a stake in the government mound and placed a 6"x6"x24" Jasper stone monument.

In 1929, Minnesota Highway Department field notes indicate the stone monument was found. Certificate of Location #91263 (May 1930) shows the stone monument being found and two 3"x3" iron pipe reference ties being placed.

County Engineer's records show the stone monument and the reference ties being in place in 1934.

In 1959, the Minnesota Highway Department found the stone monument in place.

The stone found in 1959 was removed during road construction in 1965. The location of the iron found in 1976 agrees with 1961 R/W map ties to the stone and perpetuates the location of the original Public Land Survey corner.

On July 1, 1976, the Minnesota Highway Department found a 1/2 inch iron pipe in location as shown on right-of-way map.

On July 6, 1976, the 1/2 inch iron pipe was lowered and a cast iron monument set above. Top of monument down 2 inches below surface.

An analysis of the record data indicates the cast iron monument set by the Minnesota Department of Transportation is accepted as the location of the Public Land Survey corner.