

CERTIFICATE OF LOCATION OF GOVERNMENT CORNER

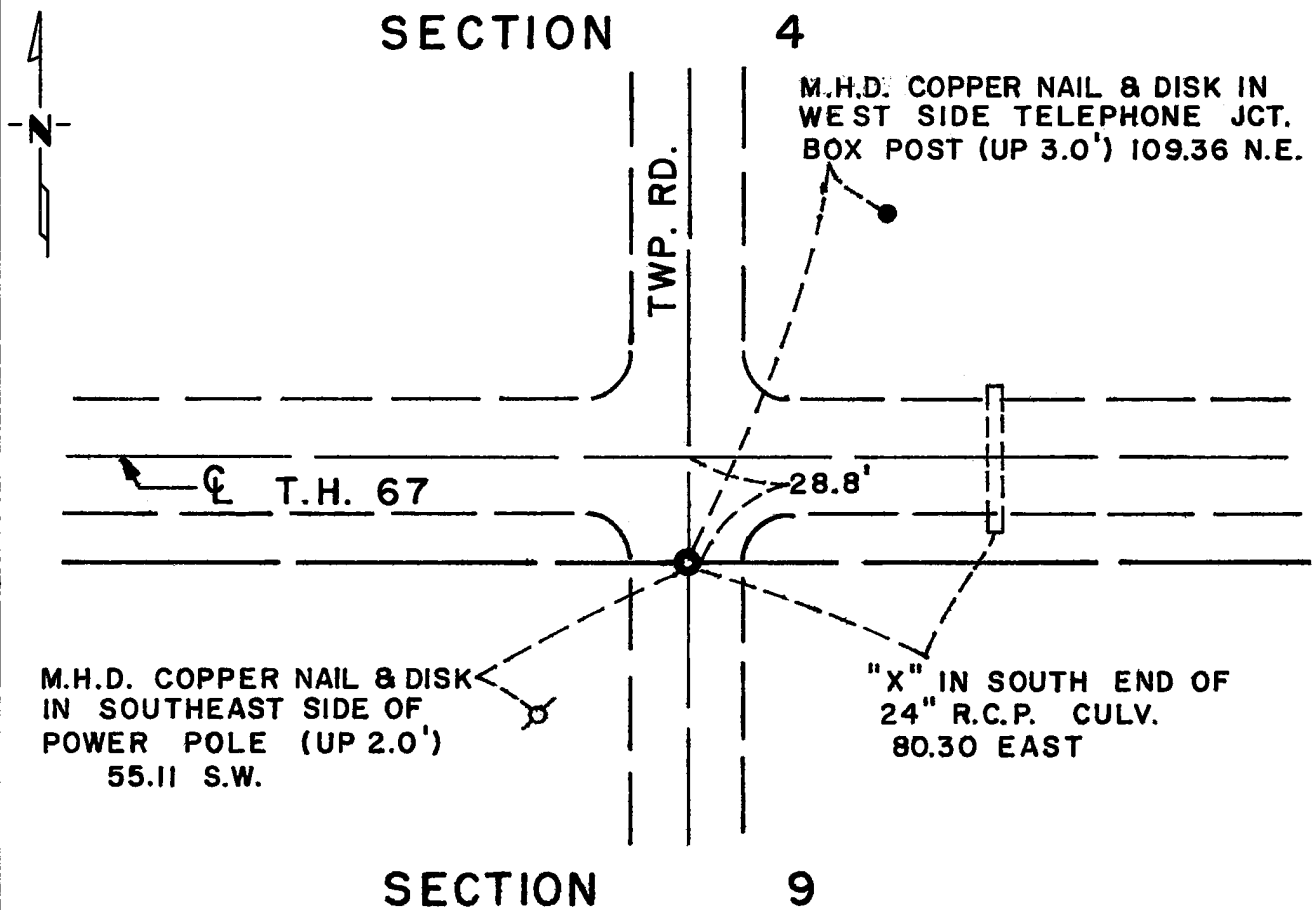
North 1/4 Corner of Section 9, Township 115N, Range 44W, 5th P.M.

STATE OF MINNESOTA, County of Yellow Medicine

At the corner location shown on the sketch:

- On 7/1/76 found a 12"x12"x15" field stone on centerline north-south Twp. Rd. and south centerline T.H. 67.
DATE
 left monument as found, lowered monument, removed monument (explain)
- On 7/6/76 placed a Minnesota Highway Department cast iron monument.
DATE

SKETCH OF REFERENCE TIES



Statement of evidence relative to this corner location is on back of page.

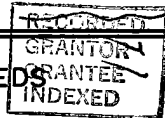
I hereby certify that this document and the data contained herein was prepared by me or under my direct supervision.

Richard M. Knudsen 1-17-77
SIGNATURE DATE

Registration No. 11526

- Land Surveyor, Professional Engineer
- County Surveyor, County Engineer

OFFICE OF THE REGISTER OF DEEDS
 County of YELLOW MEDICINE COUNTY RECORDER



I hereby certify that this document was filed in the Reg. of Deeds office at 10:00 A.M. on the 21 day of March A.D., 1977

Register of Deeds Norman J. Opdahl

By Kay Nordahl 168926 Deputy
 DOCUMENT NO. _____

Statement of Evidence: North 1/4 Cor. Sec. 9, Township 115N, Range 44W

The original Public Land Survey was run in 1871 and a post set in a mound to mark the original corner.

In 1929, Minnesota Highway Department field notes indicate a field stone was found 1½" below the surface at intersection of roads north, south, east and west.

On July 1, 1976, the Minnesota Highway Department found a large field stone.

On July 6, 1976, the Minnesota Highway Department set a cast iron monument above the stone. Top of monument down 2" below surface.

An analysis of the record data indicates the cast iron monument set by the Minnesota Department of Transportation is accepted as the location of the Public Land Survey corner.