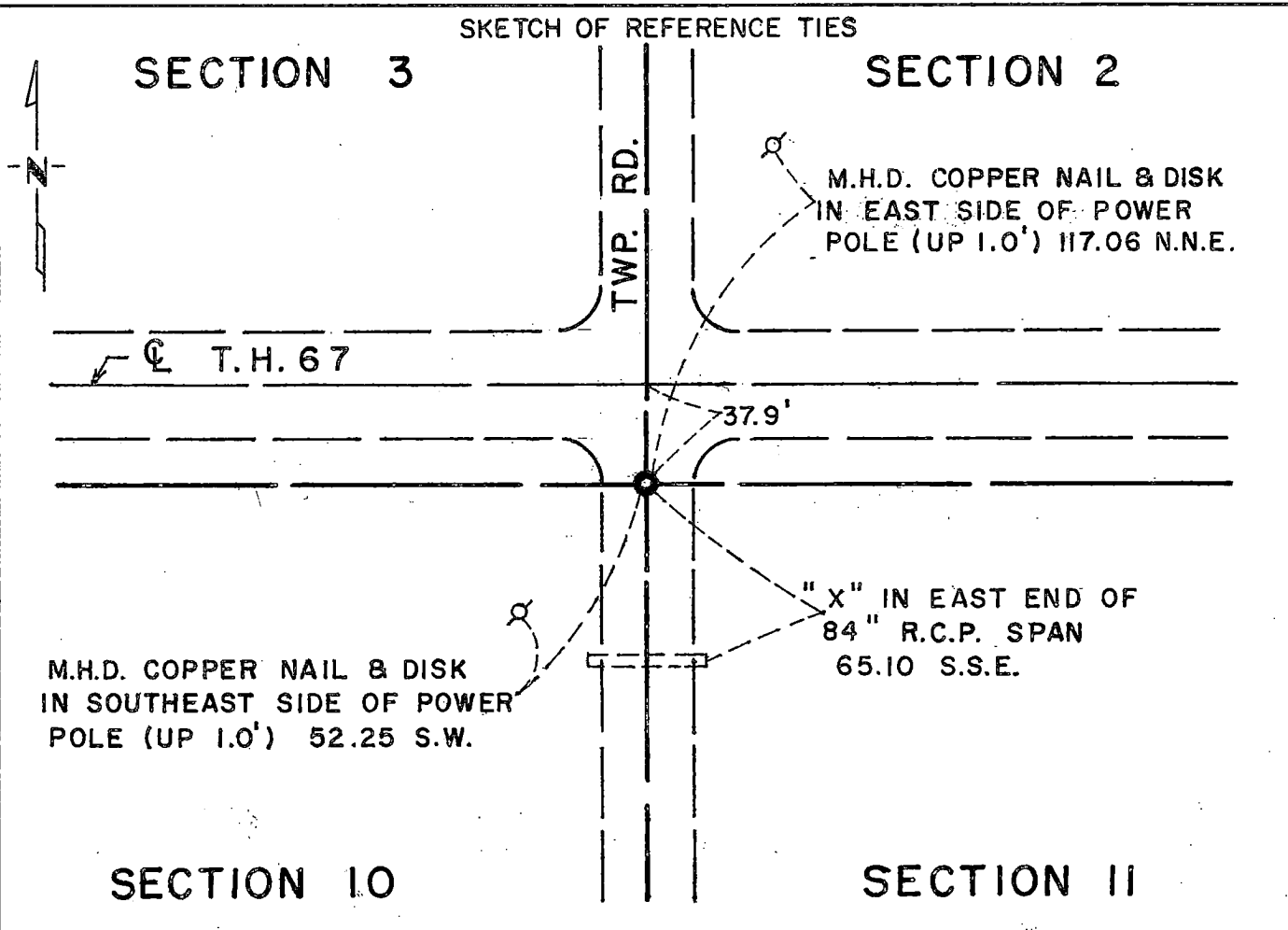


# CERTIFICATE OF LOCATION OF GOVERNMENT CORNER

Northeast Corner of Section 10, Township 115N, Range 43W, 5th P.M.  
 STATE OF MINNESOTA, County of Yellow Medicine

At the corner location shown on the sketch:

- On 6/30/76 found a 6"x6"x24" Jasper stone on centerline N-S township road and 37.9' south centerline TH 67, down 2" below  left monument as found,  lowered monument,  removed monument (explain) surface.
- On 7/6/76 placed a Minnesota Highway Department cast iron monument.



Statement of evidence relative to this corner location is on back of page.

I hereby certify that this document and the data contained herein was prepared by me or under my direct supervision.

Richard M. Kozlowski 1-17-77  
SIGNATURE DATE

Registration No. 11526  
 Land Surveyor,  Professional Engineer  
 County Surveyor,  County Engineer

OFFICE OF THE REGISTER OF DEEDS  
 County of \_\_\_\_\_

GRANTED  
 GRANTED  
 INDEXED

COUNTY RECORDED  
 YELLOW MEDICINE COUNTY  
 I hereby certify that this document was filed in the Reg. of Deeds office at 10:20 A.M. on the 21 day of March A.D., 19 77

Register of Deeds Norman J. Opdahl  
 By Kary Nordahl, Deputy  
 DOCUMENT NO. 168930

**Statement of Evidence:** Northeast Cor., Sec. 10, Township 115N, Range 43W

The original Public Land Survey was run in 1867 and a post set in a mound with charred stakes and pits to mark the original corner.

In 1901, J. Norgaard found a stake in government mound and placed 6"x6"x24" Jasper stone monument.

In 1929, Minnesota Highway Department field notes indicates the 6"x6"x24" monument was found.

In 1959, the Minnesota Highway Department found the Jasper stone monument.

On June 30, 1976 the Minnesota Highway Department dug for and found the Jasper stone monument two feet below surface.

On July 6, 1976, the Minnesota Highway Department placed a cast iron monument over the stone. Top of monument is down two inches below surface.

An analysis of the record data dating to the original monument provides a continuous chain of perpetuation of the original Public Land Survey corner.