

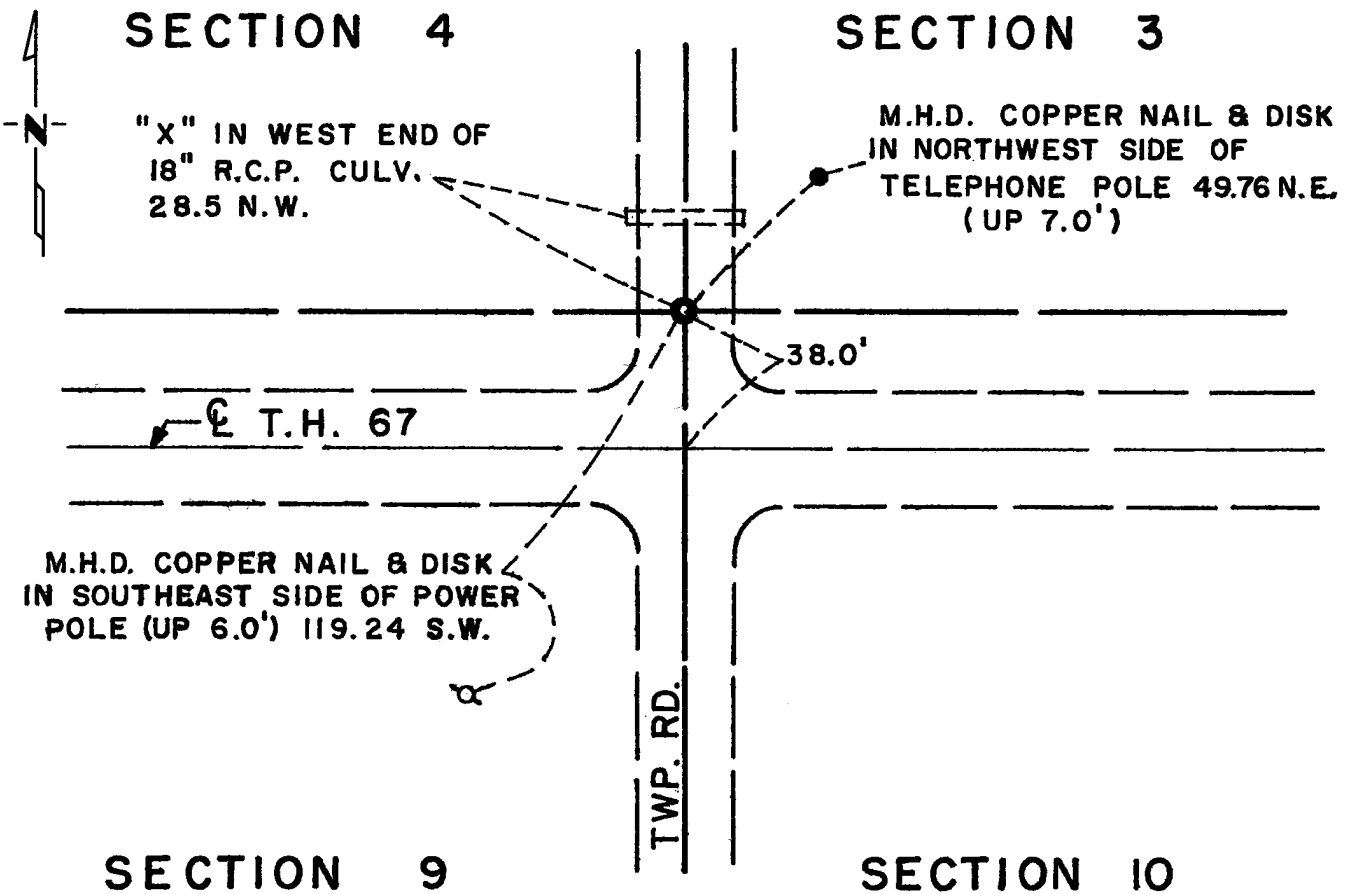
# CERTIFICATE OF LOCATION OF GOVERNMENT CORNER

Northeast Corner of Section 9, Township 115N, Range 43W, 5th P.M.  
 STATE OF MINNESOTA, County of Yellow Medicine

At the corner location shown on the sketch:

- On 6/30/76 found a 6"x8"x8" field stone in location as shown on R/W map with no stone below it, down 5½ feet.  
DATE
  - left monument as found,  lowered monument,  removed monument (explain)
- On 7/6/76 placed a Minnesota Highway Department cast iron monument.  
DATE

SKETCH OF REFERENCE TIES



Statement of evidence relative to this corner location is on back of page.

I hereby certify that this document and the data contained herein was prepared by me or under my direct supervision.

Richard M. Kozlowski 1-17-77  
SIGNATURE DATE

Registration No. 11526

- Land Surveyor,  Professional Engineer
- County Surveyor,  County Engineer

OFFICE OF THE REGISTER OF DEEDS

County of YELLOW MEDICINE COUNTY RECORDER

I hereby certify that this document was filed in the Reg. of Deeds office at 10:30 A.M. on the 21 day of March A.D., 19 77

Register of Deeds Norman J. Opdahl

By Kay Nordahl, Deputy

DOCUMENT NO. 168932

**Statement of Evidence:** Northeast Cor., Sec. 9, Township 115N, Range 43W

The original Public Land Survey was run in 1867 and a post set in a mound with charred stakes and pits and marked "BT" on boulder N 22° E .60 for witness to corner.

In 1901, J. Norgaard found stake in mound and placed a 6"x6"x24" Jasper stone monument.

In 1929, Minnesota Highway Department field notes show that above monument was in place with top 3" below ground surface.

In 1930, D. F. Mattson, Minnesota Highway Department Project Engineer, found above stone and placed two reference ties.

In 1934, the County Engineer found the stone and ties in place.

In 1959, the Minnesota Highway Department found the Jasper monument.

On June 30, 1976, the Minnesota Highway Department found the Jasper stone monument down 5.5 feet below road surface.

On July 6, 1976, the Minnesota Highway Department placed a cast iron monument over the stone. Top of monument is down 2" below surface.

An analysis of the record data dating to the original monument provides a continuous chain of perpetuation of the original Public Land Survey corner.