

CERTIFICATE OF LOCATION OF GOVERNMENT CORNER

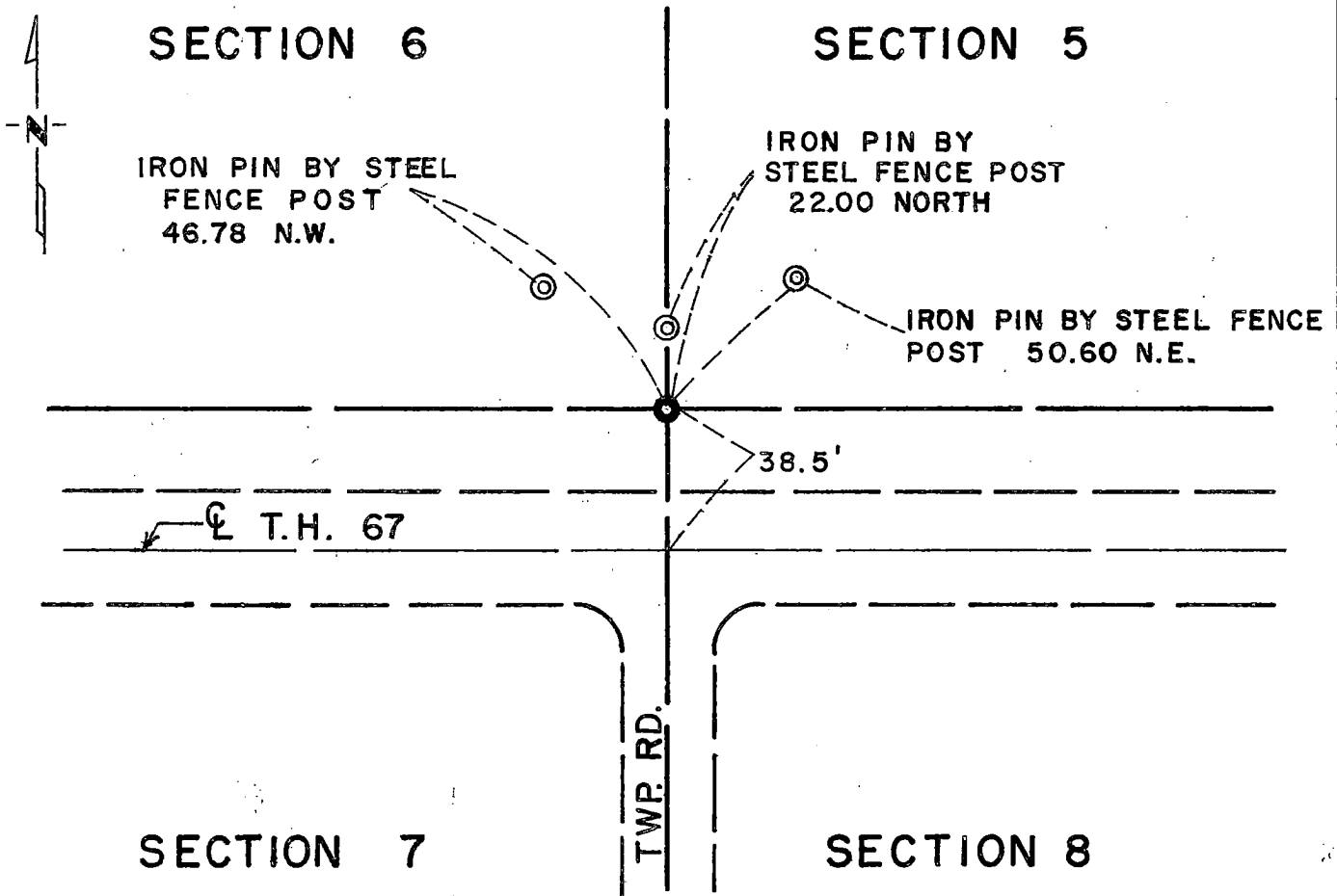
Northeast Corner of Section 7, Township 115N, Range 43W, 5th P.M.

STATE OF MINNESOTA, County of Yellow Medicine

At the corner location shown on the sketch:

- On 7/1/76 found a nest of field stones down 6' below surface
DATE
39'6" north centerline T.H. 67 and on centerline Twp. Rd. south.
 - left monument as found, lowered monument, removed monument (explain)
- On 7/6/76 placed a Minnesota Highway Department cast iron
DATE
monument 0.2' below surface.

SKETCH OF REFERENCE TIES



Statement of evidence relative to this corner location is on back of page.

I hereby certify that this document and the data contained herein was prepared by me or under my direct supervision.

Richard M. Krolgyushki 1-17-77
SIGNATURE DATE

Registration No. 11526

- Land Surveyor, Professional Engineer
- County Surveyor, County Engineer

OFFICE OF THE REGISTER OF DEEDS

County of YELLOW MEDICINE COUNTY
COUNTY RECORDER

RECORDED
GRANTED
GRANTED
INDEXED

I hereby certify that this document was filed in the Reg. of Deeds office at 10:35 A.M. on the 21 day of March A.D., 1977

Register of Deeds Norman J. Opdahl

By Kay Nordahl, Deputy

DOCUMENT NO. 168933

Statement of Evidence: Northeast Cor., Sec. 7, Township 115N, Range 43W

The original Public Land Survey was run in 1867 and a witness post set 8 chains East to mark the corner.

In June, 1891, J. Peterman, County Surveyor, found witness post 8 chains East and established corner with a stake in mound with pits.

In 1901, J. Norgaard found stake in mound and placed 6"x6"x12" Jasper stone monument.

In 1929, Minnesota Highway Department field notes indicate a 6"x6"x24" Jasper stone monument was found at the surface.

In 1959, the Minnesota Highway Department found a small stone in location as shown on right-of-way map.

On July 1, 1976, the Minnesota Highway Department found a nest of stones in the location as shown on the right-of-way map and final grading plans. It was not the Jasper stone monument, but is in an acceptable location for the government land corner. Top of monument is down 2" below surface.

An analysis of the record data indicates the cast iron monument set by the Minnesota Department of Transportation is accepted as the location of the Public Land Survey corner.

Road construction plans of 1930 indicate that the corner would have been disturbed in ditch construction at that time. The location of the cast iron agrees with the 1929 survey data and perpetuates the original Public Land Survey corner.