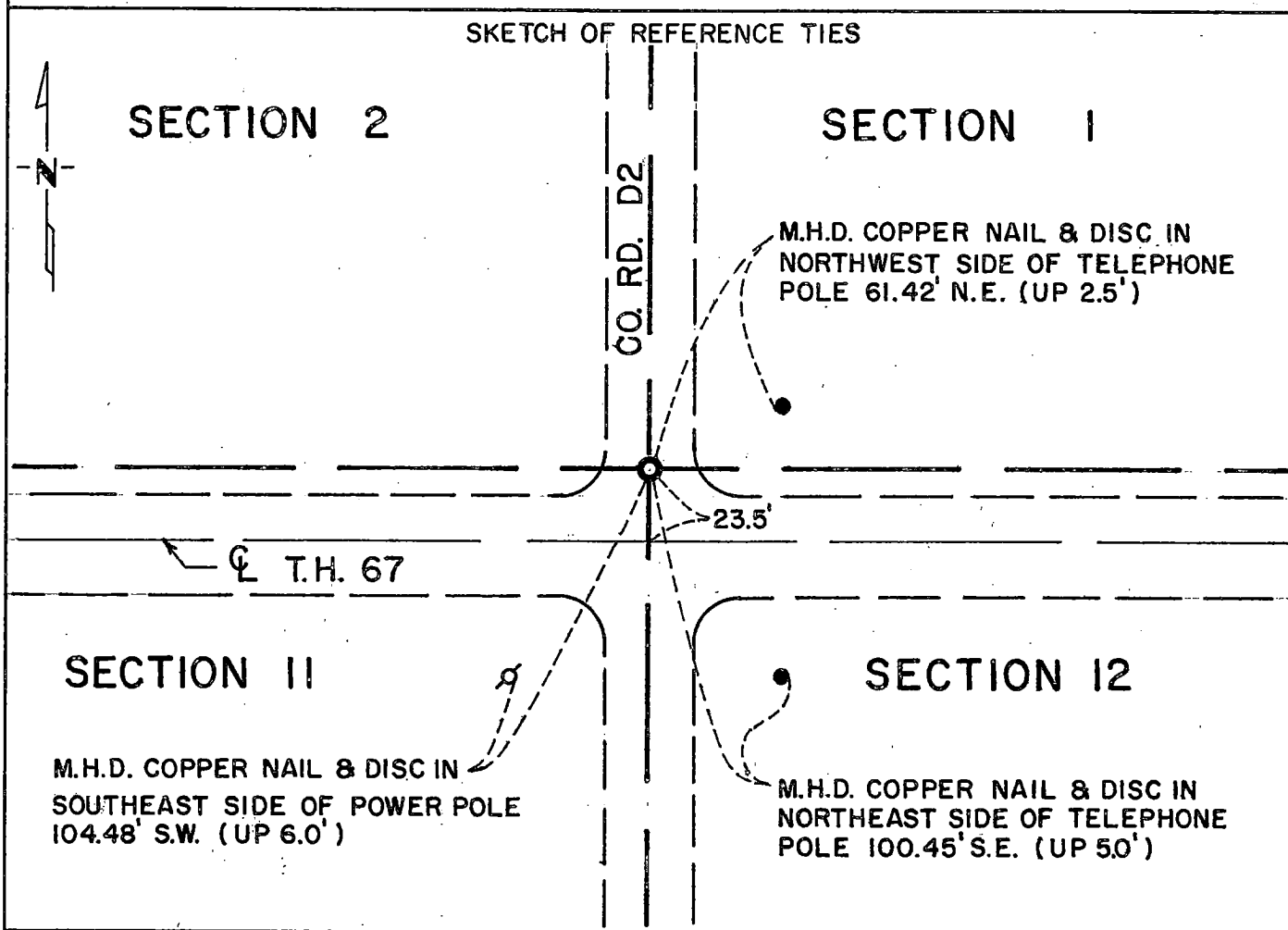


CERTIFICATE OF LOCATION OF GOVERNMENT CORNER

Northeast Corner of Section 11, Township 115N, Range 42W, 5th P.M.
STATE OF MINNESOTA, County of Yellow Medicine

At the corner location shown on the sketch:

- On 6/30/76 found a 6"x6"x24" cut jasper stone down 3' below surface on centerline north-south road and 23.5' north centerline TH.
 - left monument as found, lowered monument, removed monument (explain) 67.
- On 7/13/76 placed a Minnesota Highway Department cast iron monument down 2" below road surface.



Statement of evidence relative to this corner location is on back of page.

I hereby certify that this document and the data contained herein was prepared by me or under my direct supervision.

Richard M. Zwolczynski 1-17-77
SIGNATURE DATE

Registration No. 11526

- Land Surveyor, Professional Engineer
- County Surveyor, County Engineer

OFFICE OF THE REGISTER OF DEEDS
County of YELLOW MEDICINE COUNTY

RECORDED
GRANTED
INDEXED

I hereby certify that this document was filed in the Reg. of Deeds office at 10:50 A.M. on the 21 day of March A.D., 19 77

Register of Deeds Norman J. Opdahl

By Kary Nerdahl, Deputy

DOCUMENT NO. 168936

Statement of Evidence: Northeast Cor., Sec. 11, Township 115N, Range 42W

The original Public Land Survey was run in 1864 and a post set in a mound and pits to mark the corner.

In 1901, John Norgaard, County Surveyor, found stake and stone in government mound and placed a 6"x6"x24" cut Jasper Stone.

In August 1909, October 1913, 1919, 1922 and 1930, John Norgaard, County Surveyor, found the Jasper Stone monument.

In 1934, County Highway Engineer found the monument and placed ties.

In 1939, the Minnesota Highway Department found a Jasper Stone monument in location as shown on right-of-way map.

On June 30, 1976, the Minnesota Highway Department found the Jasper Stone monument 23.5 feet north on centerline T.H. 67 down 3' below road surface.

On July 13, 1976, the Minnesota Highway Department placed a cast iron monument over the Jasper Stone monument. Top of monument is down 2" below surface.

An analysis of the record data dating to the original monument provides a continuous chain of perpetuation of the original Public Land Survey corner.