

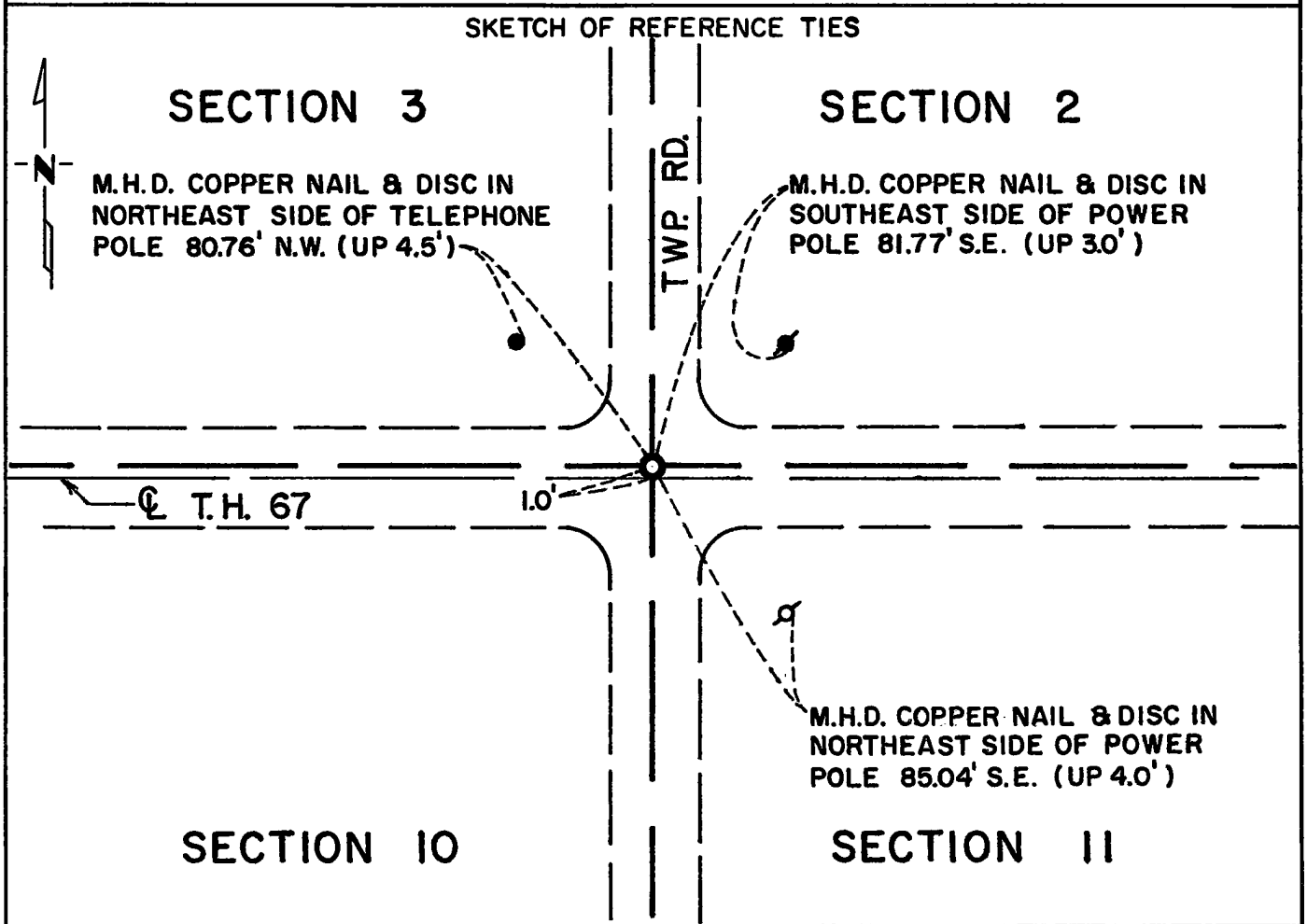
# CERTIFICATE OF LOCATION OF GOVERNMENT CORNER

Northeast \_\_\_\_\_ Corner of Section 10, Township 115N, Range 42W, 5th P.M.

STATE OF MINNESOTA, County of Yellow Medicine

At the corner location shown on the sketch:

- On \_\_\_\_\_ found a \_\_\_\_\_  
DATE
- left monument as found,  lowered monument,  removed monument (explain)
- On 12/16/76 placed a Minnesota Highway Department cast iron  
DATE monument with brass plate stamped.



Statement of evidence relative to this corner location is on back of page.

I hereby certify that this document and the data contained herein was prepared by me or under my direct supervision.

Richard M. Knofczynski 1-17-77  
SIGNATURE DATE

Registration No. 11526

- Land Surveyor,  Professional Engineer
- County Surveyor,  County Engineer

OFFICE OF THE REGISTER OF DEEDS  
County of \_\_\_\_\_ COUNTY RECORDER  
YELLOW MEDICINE COUNTY



I hereby certify that this document was filed in the Reg. of Deeds office at 10:55 A.M. on the 21 day of March A.D., 1977

Register of Deeds Norman J. Opdahl

By Kay Nerdahl, Deputy

DOCUMENT NO. 168937

Statement of Evidence: Northeast Cor., Sec. 10, Township 115N, Range 42W

The original Public Land Survey was run in 1864 and a post set in a mound with pits to mark the original corner.

In 1901, John Norgaard, County Surveyor, located corner as the center of roads said by local resident, James Paulson, to be the place where the government corner was before road grading was done. Placed a 6"x6"x24" cut Jasper Stone monument.

John Norgaard, County Surveyor, found the Jasper Stone monument in November 1916, 1919 and 1922 when ties were set.

In 1939, the Minnesota Highway Department found a Jasper Stone monument 1 foot north of centerline.

On December 16, 1976, the Minnesota Highway Department placed a cast iron monument using information and ties as shown on the right-of-way map and final grading plans. Top of monument is down 1" below surface.

An analysis of the record data indicates the cast iron monument set by the Minnesota Department of Transportation is accepted as the location of the Public Land Survey corner.