

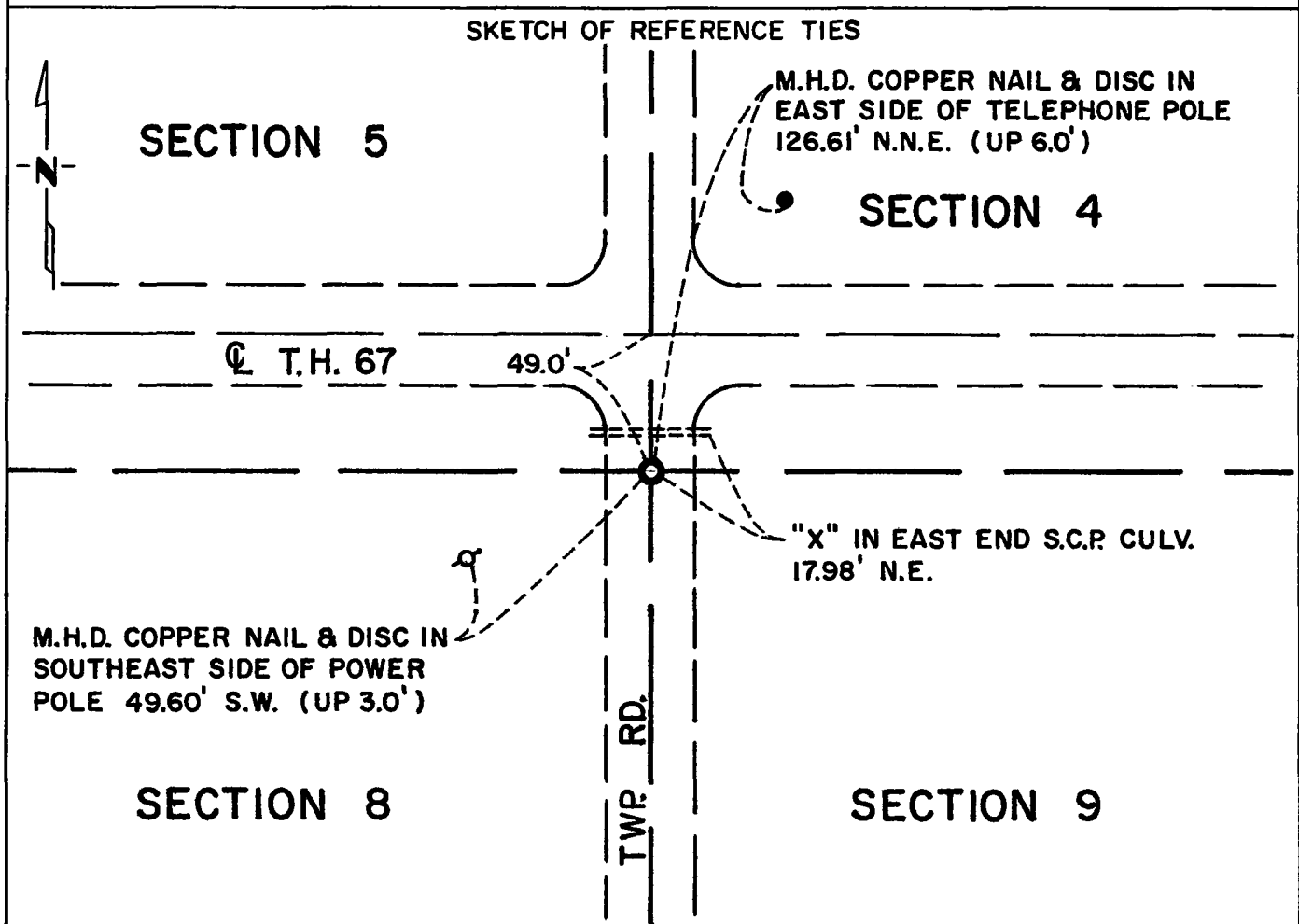
CERTIFICATE OF LOCATION OF GOVERNMENT CORNER

Northeast Corner of Section 8, Township 115N, Range 42W, 5th P.M.

STATE OF MINNESOTA, County of Yellow Medicine

At the corner location shown on the sketch:

- On _____ found a _____
DATE
- left monument as found, lowered monument, removed monument (explain)
- On 7/13/76 placed a Minnesota Highway Department cast iron
DATE monument.



Statement of evidence relative to this corner location is on back of page.

I hereby certify that this document and the data contained herein was prepared by me or under my direct supervision.

Richard M. Knofzenmacher 1-17-17
SIGNATURE DATE

Registration No. 11526

- Land Surveyor, Professional Engineer
- County Surveyor, County Engineer

OFFICE OF THE REGISTER OF DEEDS

County of YELLOW MEDICINE COUNTY RECORDER

I hereby certify that this document was filed in the Reg. of Deeds office at 11:00 A.M. on the 21 day of March A.D., 1977

Register of Deeds Norman J. Opdahl

By Kay Nordahl, Deputy

DOCUMENT NO. 168938



Statement of Evidence: Northeast Cor., Sec. 8, Township 115N, Range 42W

The original Public Land Survey was run in 1864 and a post set in a mound with pits to mark the original corner.

In May 1891, J. Peterman, County Surveyor, found government corner.

In 1901, John Norgaard found stake in government mound and placed a 6"x6"x24" Jasper Stone monument.

In 1929, the Minnesota Highway Department found the monument.

In April 1930, D. F. Mattson, Project Engineer, found the monument and placed ties.

In 1934, the County Highway Engineer found the monument and checked the above ties.

On June 30, 1976, the Minnesota Highway Department dug for the corner, but did not find it.

On July 13, 1976, the Minnesota Highway Department set the corner using information and ties from the right-of-way map and final grading plans.

An analysis of the record data indicates the cast iron monument set by the Minnesota Department of Transportation is accepted as the location of the Public Land Survey corner.

The stone found in 1934 was probably destroyed in road construction of 1965. The corner was re-established from 1929 survey data and perpetuates the location of corner marked by jasper stone set in 1901.