

CERTIFICATE OF LOCATION OF GOVERNMENT CORNER

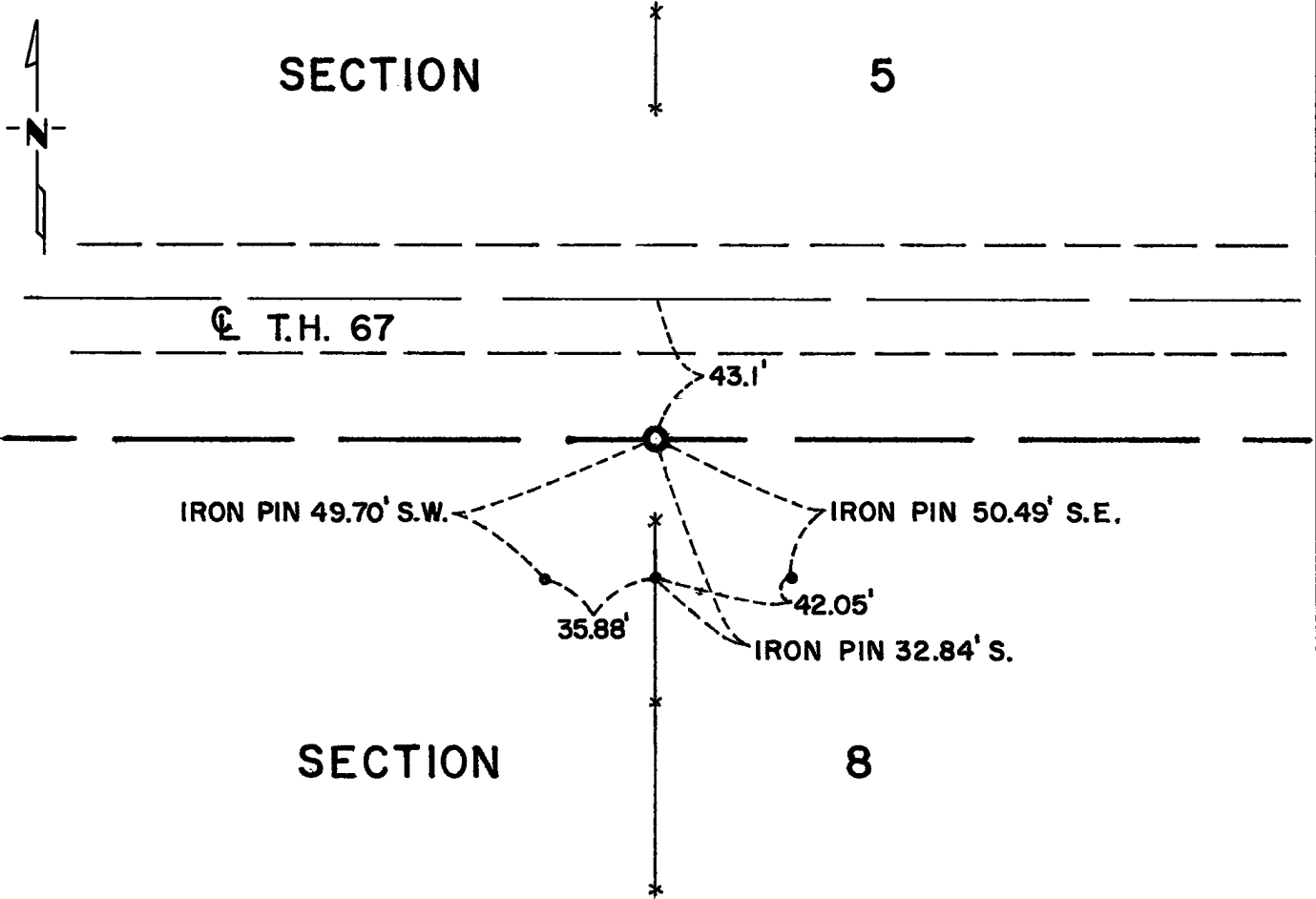
North Quarter Corner of Section 8, Township 115N, Range 42W, 5th P.M.

STATE OF MINNESOTA, County of Yellow Medicine

At the corner location shown on the sketch:

- On _____ found a _____
DATE
- left monument as found, lowered monument, removed monument (explain)
- On 7/13/76 placed a Minnesota Highway Department cast iron
DATE monument 43.1 feet South of Station 963+05.5.

SKETCH OF REFERENCE TIES



Statement of evidence relative to this corner location is on back of page.

I hereby certify that this document and the data contained herein was prepared by me or under my direct supervision.

Richard M. Knofczynski 1-17-77
SIGNATURE DATE

Registration No. 11526

- Land Surveyor, Professional Engineer
- County Surveyor, County Engineer

OFFICE OF THE REGISTER OF DEEDS

County of _____ COUNTY RECORDER
YELLOW MEDICINE COUNTY

I hereby certify that this document was filed in the Reg. of Deeds office at 11:05 A.M. on the 21 day of March A.D., 1977

Register of Deeds Norman J. Opdahl

By Kay Nordahl, Deputy

DOCUMENT NO. 168939



Statement of Evidence: North Quarter Cor., Sec. 8, Township 115N, Range 42W

The original Public Land Survey was run in 1864 and a post set in a mound with pits to mark the original corner.

In May, 1891, J. Peterman, County Surveyor, found government corner, placed field stone.

In 1929, the Minnesota Highway Department found the field stone.

In April, 1930, D. Mattson, Project Engineer, found large field stone and placed ties.

On June 30, 1976, the Minnesota Highway Department dug for the corner, but did not find it.

On July 13, 1976, the Minnesota Highway Department set the corner using information and ties from the right-of-way map and final grading plans. Top of monument is down 2" below surface.

An analysis of the record data indicates the cast iron monument set by the Minnesota Department of Transportation is accepted as the location of the Public Land Survey corner.