

# CERTIFICATE OF LOCATION OF GOVERNMENT CORNER

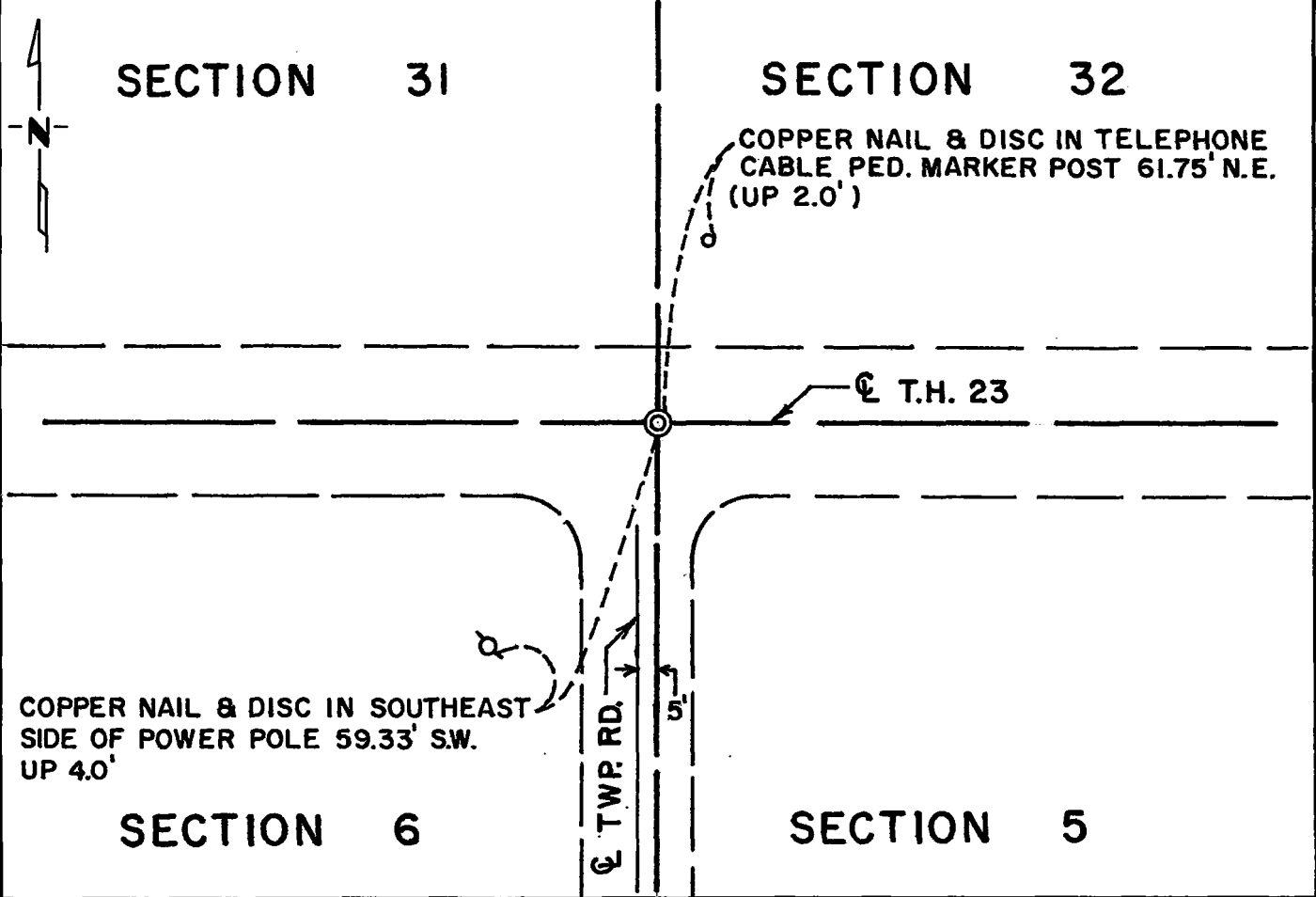
Northeast Corner of Section 6, Township 115N, Range 39W, 5th P.M.

STATE OF MINNESOTA, County of Yellow Medicine

At the corner location shown on the sketch:

- On \_\_\_\_\_ found a \_\_\_\_\_  
DATE
- left monument as found,  lowered monument,  removed monument (explain)
- On Dec. 22, 1976 placed a Minnesota Highway Department cast iron monument at  
DATE  
road surface.

### SKETCH OF REFERENCE TIES



Statement of evidence relative to this corner location is on back of page.

I hereby certify that this document and the data contained herein was prepared by me or under my direct supervision.

Richard M. Knofyski 9-15-77  
SIGNATURE DATE

Registration No. 11526

- Land Surveyor,  Professional Engineer
- County Surveyor,  County Engineer

COUNTY RECORDER  
OFFICE OF THE YELLOW MEDICINE COUNTY  
County of Yellow Medicine

I hereby certify that this document was filed in the Reg. of Deeds office at 12:05 P.M. on the 4<sup>th</sup> day of October A.D., 19 77

COUNTY RECORDER Norman J. Opsahl  
YELLOW MEDICINE COUNTY

By Kay Nordahl, Deputy

DOCUMENT NO. 170322

**Statement of Evidence:** N.E. Cor. Sec. 6, T115N, R39W.

The original Public Land Survey of the township line was completed in 1858 by W. J. Neely. A wood post was set and coal was deposited in a mound of dirt with trenches and pits to mark the corner.

In 1901, John Norgaard, County Surveyor, found a stone set in the government mound by adjoining land owners when the mound could still be seen. He set a 6"x6"x24" granite monument level with the ground at this location.

1931 Minnesota Highway Department notes show that a granite monument was found marking the corner. The notes show the corner to be on the centerline of T.H. 23 at engineer's station 130+63.0.

In 1976 a Mn/DOT survey crew set a cast iron monument at said engineer's station 130+63 to mark the corner. Being the corner is in a concrete pavement, no excavation was made for the corner.

This is accepted as the position for the government corner because it nearly fits occupation lines, that is, it is on the centerline of T.H. 23 and 5 feet east of the centerline of a north/south township road. Also, the 1931 notes were very definite in showing the location of the corner.

For details of survey analysis and 1976 electronic measurements, see the Survey Report for S.P. 8702 and S.P. 8706, Jct. T.H. 23 and T.H. 67 - 3 miles S.W. of Granite Falls, on file with the Surveys Section, Mn/DOT, Willmar, MN, 56201.

RECORDED  
GRANTOR  
GRANTEE  
INDEXED

170322

OFFICE OF COUNTY RECORDER }  
County of Yellow Medicine, Minn. } ss

I hereby certify that the within instrument  
was filed in this office for record on the \_\_\_\_\_  
day of \_\_\_\_\_ A. D. 19\_\_\_\_, at \_\_\_\_\_  
o'clock \_\_\_\_\_ M. and was duly recorded in book  
\_\_\_\_\_ of \_\_\_\_\_ Page \_\_\_\_\_

County Recorder

By \_\_\_\_\_

Deputy