

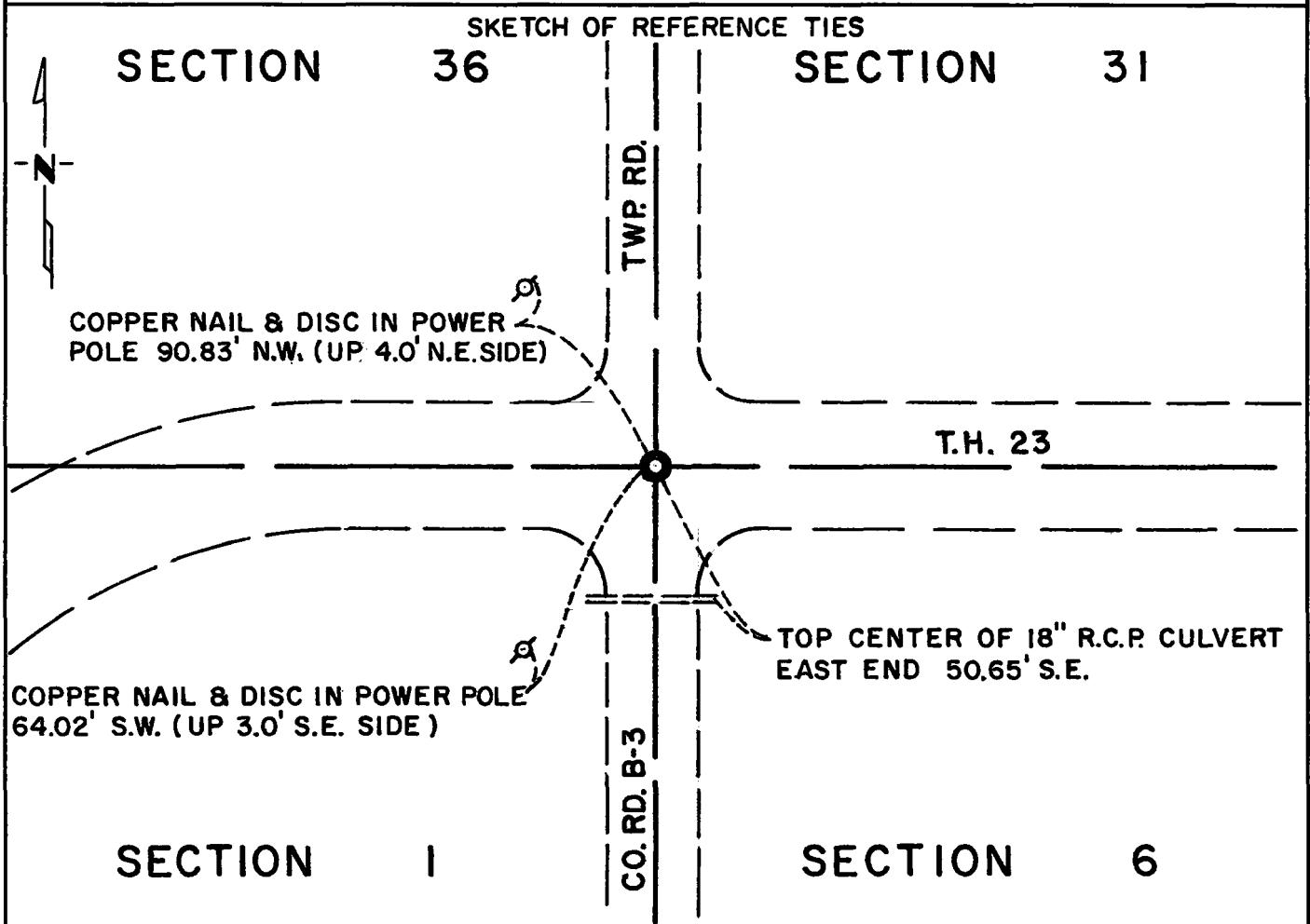
CERTIFICATE OF LOCATION OF GOVERNMENT CORNER

Northeast Corner of Section 1, Township 115N, Range 40W, 5th P.M.

STATE OF MINNESOTA, County of Yellow Medicine

At the corner location shown on the sketch:

- On _____ found a _____
DATE
- left monument as found, lowered monument, removed monument (explain)
- On Dec. 21, 1976 placed a Minnesota Highway Department cast iron monument
DATE
at road surface.



Statement of evidence relative to this corner location is on back of page.

I hereby certify that this document and the data contained herein was prepared by me or under my direct supervision.

Richard M. Knofczynski 9-15-77
SIGNATURE DATE

Registration No. 11526

Land Surveyor, Professional Engineer

County Surveyor, County Engineer

COUNTY RECORDER
OFFICE OF THE YELLOW MEDICINE COUNTY
County of Yellow Medicine

I hereby certify that this document was filed in the Reg. of Deeds office at 12:15 P. .M. on the 4th day of October A.D., 19 77

COUNTY RECORDER
YELLOW MEDICINE COUNTY Norman J. Opdahl

By Kay Nordahl, Deputy

DOCUMENT NO. 170324

Statement of Evidence: N.E. Cor. Sec. 1, T115N, R40W.

The original Public Land Survey of the township line was completed in 1858 by W. J. Neeley. A wood post was set and coal was deposited in a mound of dirt with trenches and pits to mark the corner.

John Norgaard, the County Surveyor, states in his 1913 survey notes that he found an iron monument marking the township corner and that the iron monument was set in the government mound in 1896.

1931 Minnesota Highway Department notes show that a square iron and a wooden stake were found marking the township corner. The notes show the corner as being 0.5 feet south of engineer's station 79+96.5 (T.H. 23).

In May 1976, a Minnesota Highway Department survey crew searched the area shown on the R/W map with a metal locator. There was some indication of iron. Being this is a concrete pavement, no excavation was made for the corner.

On December 21, 1976, a Mn/DOT survey crew set a cast iron monument at the location shown on the R/W map, that is 0.5 feet south of T.H. 23 engineer's station 79+96.5.

This location is accepted as the government corner because it fits the location as shown on the R/W map which has marked the corner for at least 45 years and it also fits occupation lines.

For details of survey analysis and 1976 electronic measurements, see the Survey Report for S.P. 8702 and S.P.8706, Jct. T.H. 23 and T.H. 67 - 3 miles S.W. of Granite Falls, on file with the Surveys Section, Mn/DOT, Willmar, MN, 56201.