

CERTIFICATE OF LOCATION OF GOVERNMENT CORNER

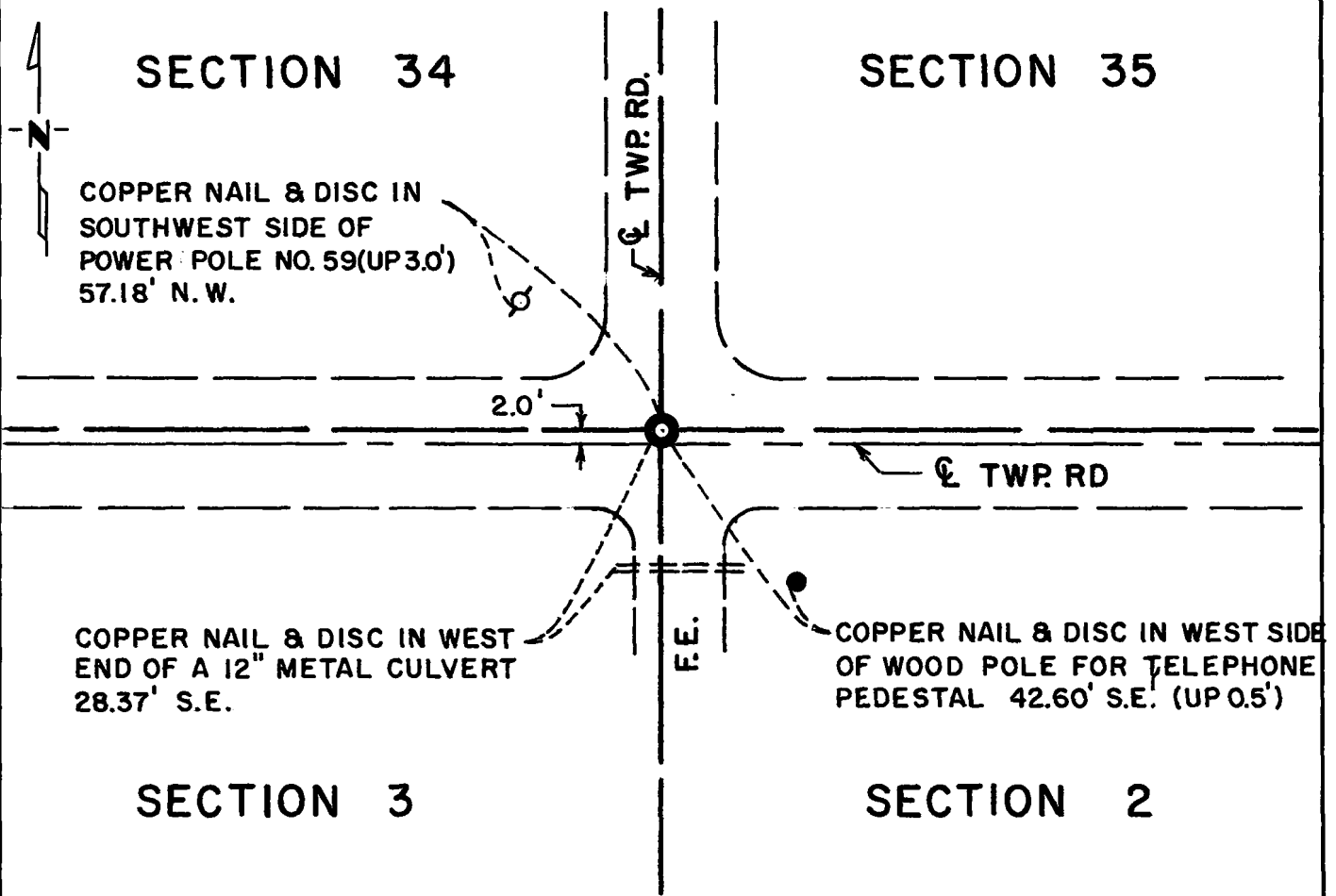
Northeast Corner of Section 3, Township 115N, Range 40W, 5th P.M.

STATE OF MINNESOTA, County of Yellow Medicine

At the corner location shown on the sketch:

- On Nov. 10, 1976 found a 6"x6"x24" Granite Monument 1.7 feet below the present road surface.
DATE
- left monument as found, lowered monument, removed monument (explain)
- On Nov. 24, 1976 placed a Minnesota Highway Department cast iron monument stamp-
DATE
 ed "NE Cor Sec 3" over the granite mon. with top of C.I. 3" below road surface.

SKETCH OF REFERENCE TIES



Statement of evidence relative to this corner location is on back of page.

I hereby certify that this document and the data contained herein was prepared by me or under my direct supervision.

Richard M. Knoflynski 9-15-77
SIGNATURE DATE

Registration No. 11526

- Land Surveyor, Professional Engineer
- County Surveyor, County Engineer

COUNTY RECORDER
 YELLOW MEDICINE COUNTY
 OFFICE OF THE Yellow Medicine
 County of _____

I hereby certify that this document was filed in the Reg. of Deeds office at 12:20 P. .M. on the 4th day of October A.D., 19 77

COUNTY RECORDER
 YELLOW MEDICINE COUNTY Norman J. Oystert

By Kay Nordahl, Deputy

DOCUMENT NO. 170325

Statement of Evidence: N.E. Cor. Sec. 3, T115N, R40W, 5th P.M.

- 1858 - The original Public Land Survey of the township line was completed by W. J. Neeley. A wood post was set over deposited coal in a dirt mound with trenches and pits to mark the corner.
- 1901 - John Norgaard, County Surveyor, found a stake and stone reported to be set in the government mound by the previous County Surveyor. A 6"x6"x24" granite mounment was set to mark the corner.
- 1915 - John Norgaard found the granite monument and used it in a survey of Section 3.
- 1976 - A Minnesota Highway Department survey crew excavated a 20 foot by 8 foot by 3½ foot deep hole to natural ground. Found an old road bed about 1½ feet below present road surface. Nothing was found marking the corner. The hole was dug at the intersection of the centerlines of an east/west road and a north/south road north and a field division line about one-half mile south.
- 1976 - After an analysis of the record data compared to the electronic field measurements, it was decided to excavate north of intersection and at lost location. On November 10, 1976, excavated a 8 foot by 20 foot by 3.5 foot deep hole. Found a 6"x6"x24" granite monument 1.7 feet below present road surface and 2 inches below an old road bed. Monument is on centerline of a north township road and 2 feet north of centerline of a east-west township road. Found old lath on north and east side of monument. Drove 3/4"x24" iron pin along east side of granite monument. On November 24, 1976, placed MHD cast iron monument above granite monument. An analysis of this data provides a continuous chain of record perpetuating the location of the original Public Land Survey corner.

For details of survey analysis and 1976 electronic measurements, see the survey report for S.P. 8702 and S.P. 8706, Jct. T.H. 23 and T.H. 67 - 3 miles S.W. of Granite Falls, on file with the Surveys Section, Minnesota Highway Department, Willmar, MN, 56201.