

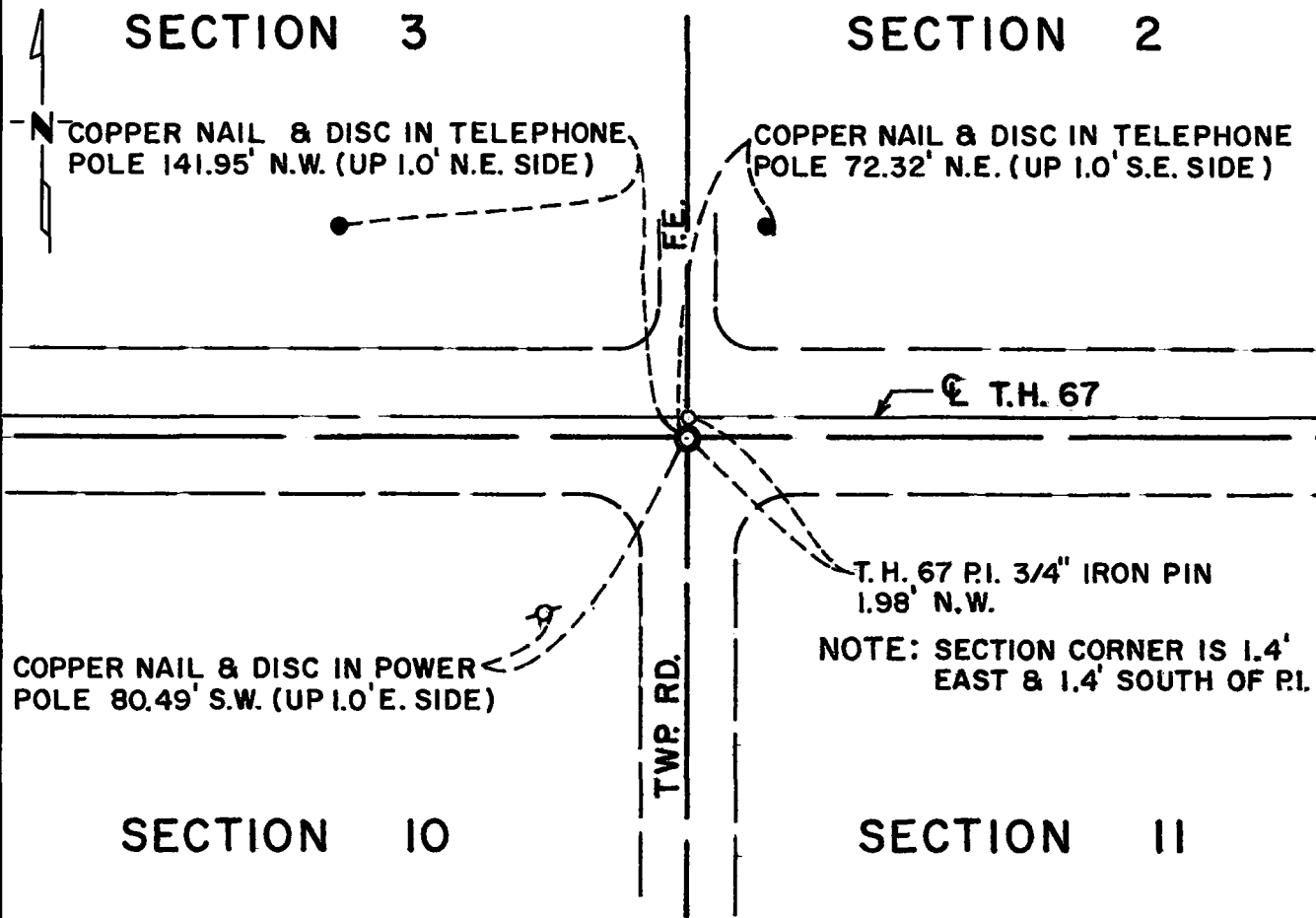
# CERTIFICATE OF LOCATION OF GOVERNMENT CORNER

Northeast Corner of Section 10, Township 115N, Range 40W, 5th P.M.  
 STATE OF MINNESOTA, County of Yellow Medicine

At the corner location shown on the sketch:

- On \_\_\_\_\_ found a \_\_\_\_\_  
DATE
- left monument as found,  lowered monument,  removed monument (explain)
- On Dec. 22, 1976 placed a Minnesota Highway Department cast iron monument at  
DATE  
road surface.

### SKETCH OF REFERENCE TIES



Statement of evidence relative to this corner location is on back of page.

I hereby certify that this document and the data contained herein was prepared by me or under my direct supervision.

Richard M. Kuofyanski 9-15-77  
SIGNATURE DATE

Registration No. 11526

- Land Surveyor,  Professional Engineer
- County Surveyor,  County Engineer

COUNTY RECORDER  
 OFFICE OF THE YELLOW MEDICINE COUNTY  
 County of Yellow Medicine

I hereby certify that this document was filed in the Reg. of Deeds office at 12:25 P. .M. on the 4<sup>th</sup> day of October A.D., 19 77

COUNTY RECORDER  
 YELLOW MEDICINE COUNTY Norman J. Opdahl

By Kay Nordahl, Deputy

DOCUMENT NO. 170326

**Statement of Evidence:** N.E. Cor. Sec. 10, T115N, R40W

The original Public Land Survey was completed in 1864 by C. E. Davis and J. W. Webb Jr. A wood post was set in a dirt mound with trenches and pits to mark the corner.

In 1901, John Norgaard, the County Surveyor, found a stone in the government mound and set a 6" by 6" by 24" granite monument in the mound to mark the corner.

In 1931, a Minnesota Highway Department survey crew found the granite monument at the section corner. The notes show that the granite monument is 1.4 feet east and 1.4 feet south of the point of intersection of tangents engineer's station 53+20.3 (T.H. 67). The notes also show that the survey crew removed the granite monument but did not show whether or not the monument was replaced.

In 1976, a Mn/DOT survey crew found an iron pin at T.H. 67 P.I. Station 53+20.3. No excavation was made for the section corner because it was felt that nothing was in place and the P.I. had been perpetuated since 1931.

In 1976, a Mn/DOT survey crew set a cast iron monument 1.4 feet south and 1.4 feet east of said P.I. 53+20.3.

An analysis of the record data provides a continuous chain of perpetuation for the location of the government corner.

For details of survey analysis and 1976 electronic measurements, see the Survey Report for S.P. 8702 and S.P. 8706, Jct. T.H. 23 and T.H. 67 - 3 miles S.W. of Granite Falls, on file with the Surveys Section, Mn/DOT, Willmar, MN, 56201.