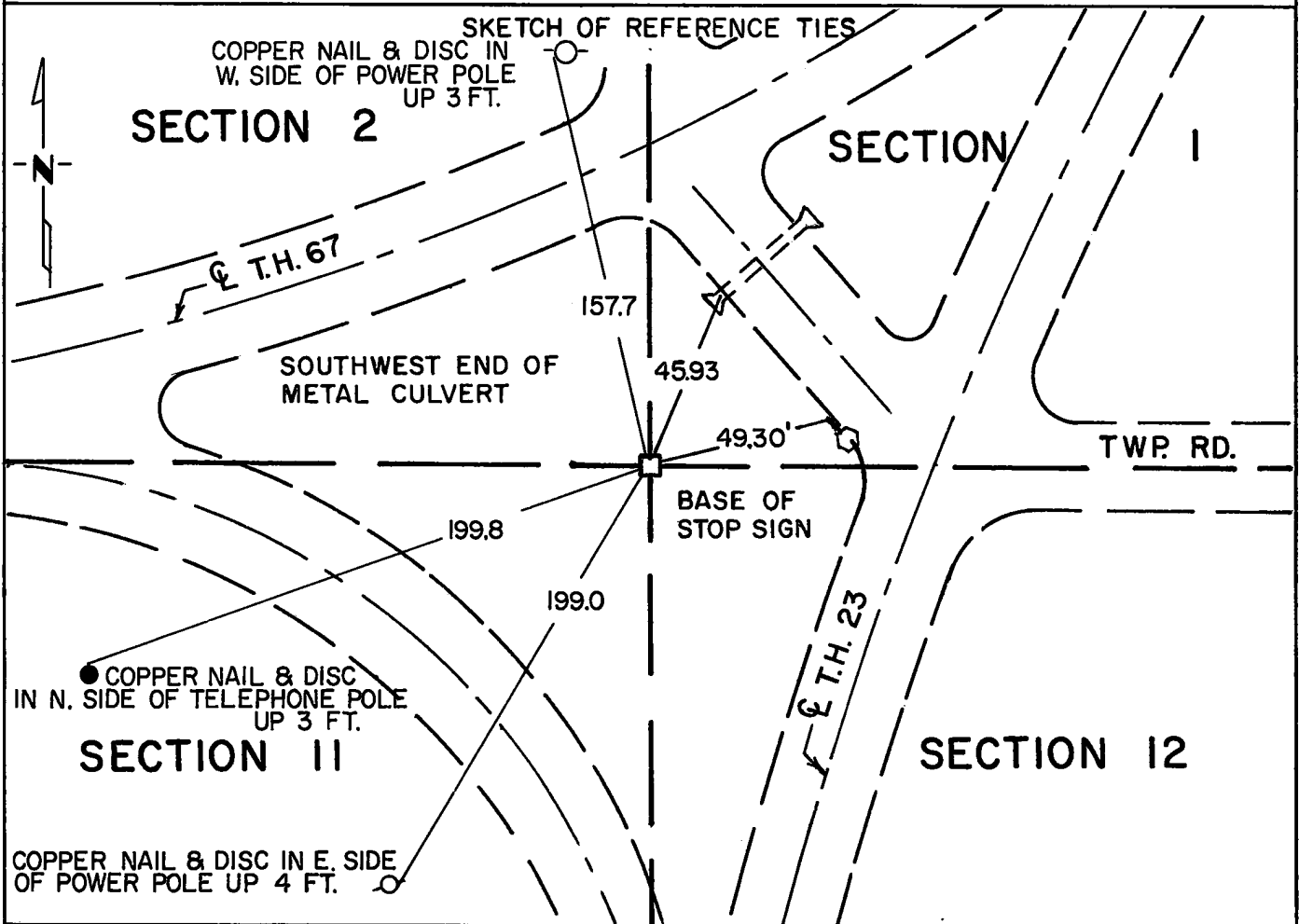


# CERTIFICATE OF LOCATION OF GOVERNMENT CORNER

\_\_\_\_\_ Northeast \_\_\_\_\_ Corner of Section 11, Township 115N, Range 10W, 5 P.M.  
 STATE OF MINNESOTA, County of Yellow Medicine

At the corner location shown on the sketch:

- On April 29, 1976 found a Standard Minnesota Highway Department bench mark disc in 6 foot concrete monument flush with the ground  
DATE
- left monument as found,  lowered monument,  removed monument (explain)
- On \_\_\_\_\_ placed a \_\_\_\_\_  
DATE



Statement of evidence relative to this corner location is on back of page.

I hereby certify that this document and the data contained herein was prepared by me or under my direct supervision.

Robert C Jones 7/1/1976  
SIGNATURE DATE

Registration No. 11864

- Land Surveyor,  Professional Engineer
- County Surveyor,  County Engineer

COUNTY RECORDER  
 OFFICE OF THE YELLOW MEDICINE COUNTY  
 County of Yellow Medicine

I hereby certify that this document was filed in the Reg. of Deeds office at 12:30 P. M. on the 4<sup>th</sup> day of October A.D., 19 77

COUNTY RECORDER  
Norman J. Opdahl  
 YELLOW MEDICINE COUNTY

By Kay Nerdahl, Deputy

DOCUMENT NO. 170327

Statement of Evidence: N.E. Cor. Sec. 11, T115N, R40W.

- 1864 - The original Public Land Survey was completed by C. E. Davis and J. W. Webb, Jr. A wood post was set in a mound of dirt with trenches and pits to mark the corner.
- 1901 - John Norgaard, the County Surveyor, found a stone in the government mound and set a 6" x 6" x 24" granite monument in the mound to mark the corner. He used this monument on a survey in 1915.
- 1931 - A Minnesota Highway Department survey crew found a spike at the intersection of roads. The notes indicate that John Norgaard was consulted and he approved the location of the spike as being that of the section corner. The spike was at the point of intersection of tangents engineer's station 105+94.3 on T.H. 67. In 1936 and 1939, surveys were made for T.H. 23 and an iron pin was found at the section corner. This is a common point of intersection of tangents for curves on both T.H. 23 and T.H. 67.
- 1955 - The Minnesota Highway Department placed a 6 foot long concrete monument with a standard brass bench mark disc on top at engineer's station 105+94.3 (T.H. 67).
- 1976 - A Minnesota Highway Department survey crew found the bench mark monument marking the corner.

The bench mark is accepted as the location of the government corner because it fits occupation lines, the old right-of-way map location and this location has marked the corner for 45 years.

For details of survey analysis and 1976 electronic measurements, see the survey report for S.P. 8702 & S.P. 8706, Jct. T.H. 23 & T. H. 67 -- 3 miles S.W. of Granite Falls, on file with the Surveys Section, Minnesota Highway Department, Willmar, Minn. 56201.