

CERTIFICATE OF LOCATION OF GOVERNMENT CORNER

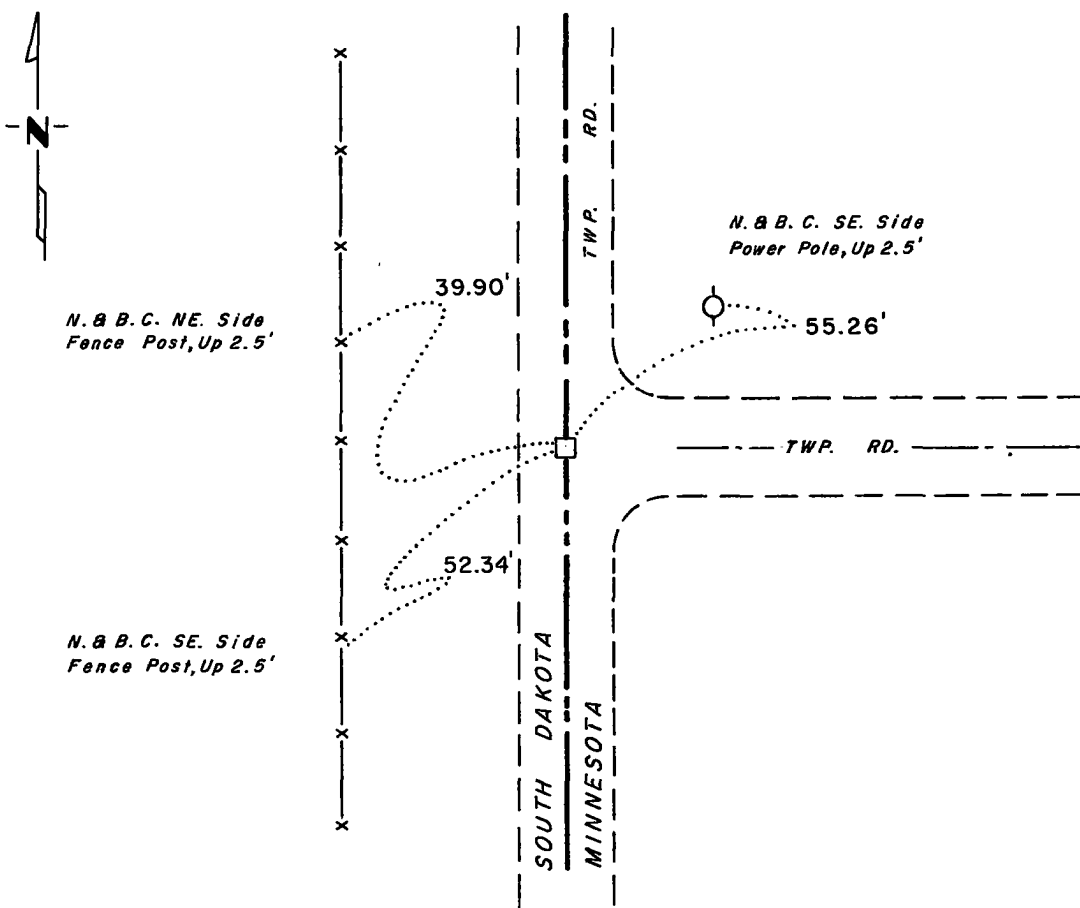
Northwest Corner of Section 31, Township 114, Range 46, 5th. P.M.

STATE OF MINNESOTA, County of YELLOW MEDICINE

At the corner location shown on the sketch:

- On 6-28-77 found a 5" x 9" Granite Block, Down 2.8' 2' North of E Road East
DATE
And 1' West of E Road North-South
 - left monument as found, lowered monument, removed monument (explain)
- On 6-28-77 placed a 3/4" x 24" Iron Rod Over, Down 0.3'
DATE

SKETCH OF REFERENCE TIES



RECORDED
GRANTOR ✓
GRANTEE ✓
INDEXED ✓

Statement of evidence relative to this corner location is on back of page.

I hereby certify that this document and the data contained herein was prepared by me or under my direct supervision.

Nancy H. Stevenson 10-20-78
SIGNATURE DATE

Registration No. 12604

- Land Surveyor, Professional Engineer
- County Surveyor, County Engineer

COUNTY RECORDER
 OFFICE OF THE YELLOW MEDICINE COUNTY
 County of Yellow Medicine

I hereby certify that this document was filed in the County Recorder's office at 12:50 P.M. on the 1 day of November A.D., 1978

COUNTY RECORDER Norman J. Opdahl
 YELLOW MEDICINE COUNTY

By Kay Nordahl, Deputy

DOCUMENT NO. 172777

Statement of Evidence:

Northwest Corner, Section 31, Township 114, Range 46. Yellow Medicine County.

This corner was originally established by the U.S. General Land Office survey in 1871. This corner was set 6.80 chains (448.8') west of the North Quarter Corner Section 31 and 13.79 chains (910.1') south of M.P. #45. The government notes show corner marked with a wood post set in mound of earth with pits and trench dug around the mound.

In January, 1977, the DNR Bureau of Engineering contacted the Yellow Medicine County Offices of the recorder and highway engineer.

The following information was obtained from the recorder. John Norgaard, County Surveyor, remonumented all section corners in the county from 1899 to 1901 and recorded it in the Surveyor's Record Book B. On page 222, he states set a 6" x 6" x 24" granite block at this corner, 910' south of mile post #45 and in line with the meander point and the monument for Dakota.

On June 28, 1977, we hired a backhoe operated by Pat Sterzinger of Ivanhoe to dig for evidence of this corner. We found a 5" x 9" granite block down 2.8' in road intersections and set a 3/4" x 24" iron rod over the block. We measured 912.0' to mile post #45.

Picture evidence of the corner is on file with the DNR Bureau of Engineering.