

CERTIFICATE OF LOCATION OF GOVERNMENT CORNER

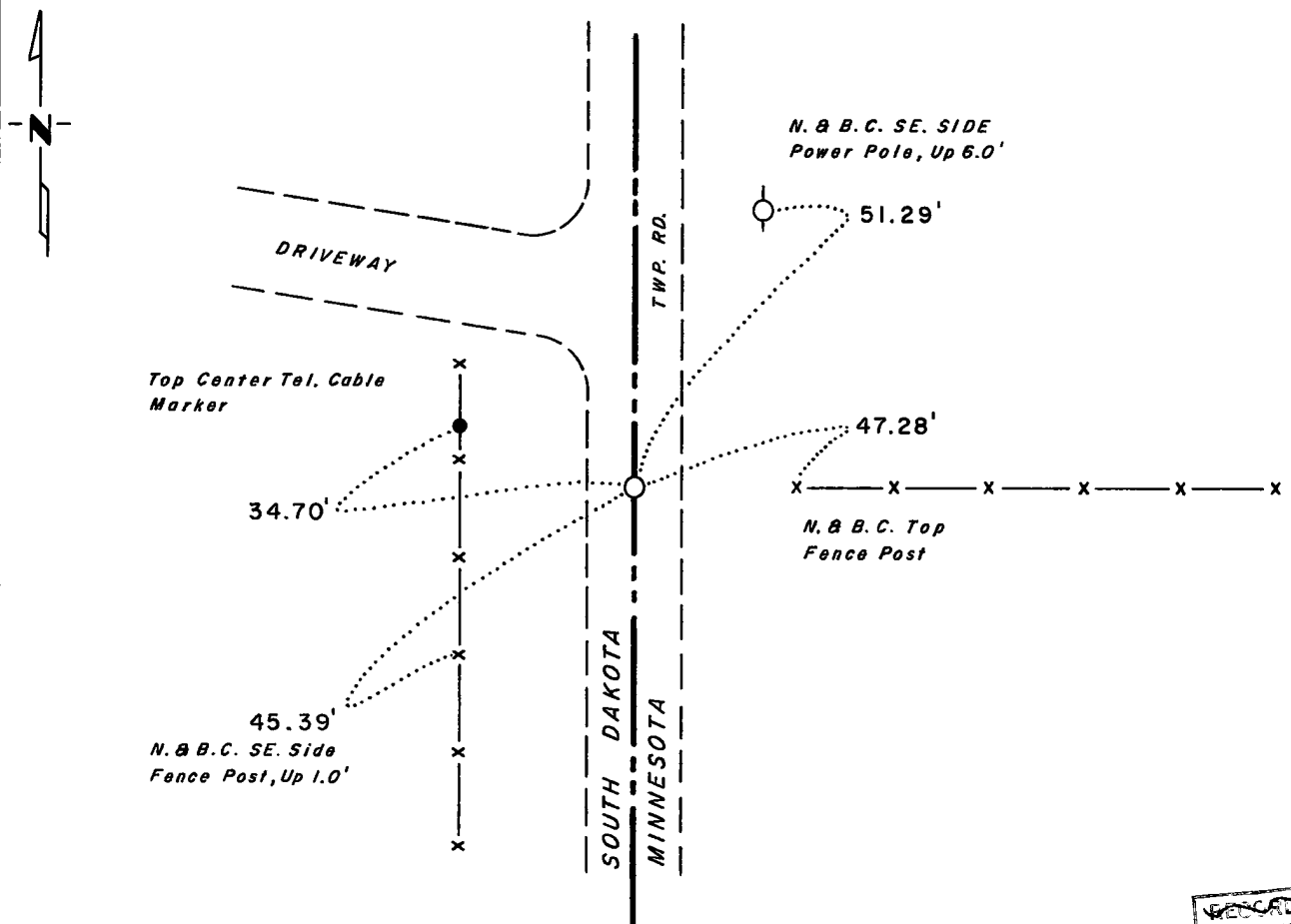
West Quarter Corner of Section 31, Township 114, Range 46, 5th P.M.

STATE OF MINNESOTA, County of YELLOW MEDICINE

At the corner location shown on the sketch:

- On 6-28-77 found a Pile of 10-3" x 8" Stones With Rust Colored Soil in the Center,
DATE
Down 2'±
- left monument as found, lowered monument, removed monument (explain)
- On 6-28-77 placed a 3/4" x 24" Iron Rod Over Center of Stones, Down 0.3'
DATE

SKETCH OF REFERENCE TIES



RECORDED
 GRANTED
 GRANTEE
 INDEXED

Statement of evidence relative to this corner location is on back of page.

I hereby certify that this document and the data contained herein was prepared by me or under my direct supervision.

Mary A. Stevens 10-20-78
SIGNATURE DATE

Registration No. 12604

- Land Surveyor, Professional Engineer
- County Surveyor, County Engineer

COUNTY RECORDER
 OFFICE OF THE YELLOW MEDICINE COUNTY
 County of Yellow Medicine

I hereby certify that this document was filed in the County Recorder's office at 12:55 P.M. on the 1 day of November A.D., 1978

COUNTY RECORDER
 YELLOW MEDICINE COUNTY Dorvan J. Opdahl
 By Kay Nordahl, Deputy

DOCUMENT NO. 172778

Statement of Evidence:

West Quarter Corner of Section 31, Township 114, Range 46.
Yellow Medicine County.

This corner was not set in the original Government survey.

In January, 1977, the DNR Bureau of Engineering contacted the Yellow Medicine County Offices of the recorder and highway engineer. No information found.

In June, 1977, the DNR contacted the Devel County, South Dakota offices of the recorder, auditor and highway engineer. No information was found.

On June 28, 1977, we hired a backhoe operated by Pat Sterzinger of Ivanhoe to dig for evidence of this corner. We found pile of 10 stones, 3"-10" in diameter with rust colored soil in the center, 2' more or less below the road surface, in line with fence east and in centerline north-south road. We set a 3/4" x 24" iron rod over the center of stones. This position is 20.4' north and 1.9' west of lost position.

Picture evidence of the corner is on file with the DNR Bureau of Engineering.