

CERTIFICATE OF LOCATION OF GOVERNMENT CORNER

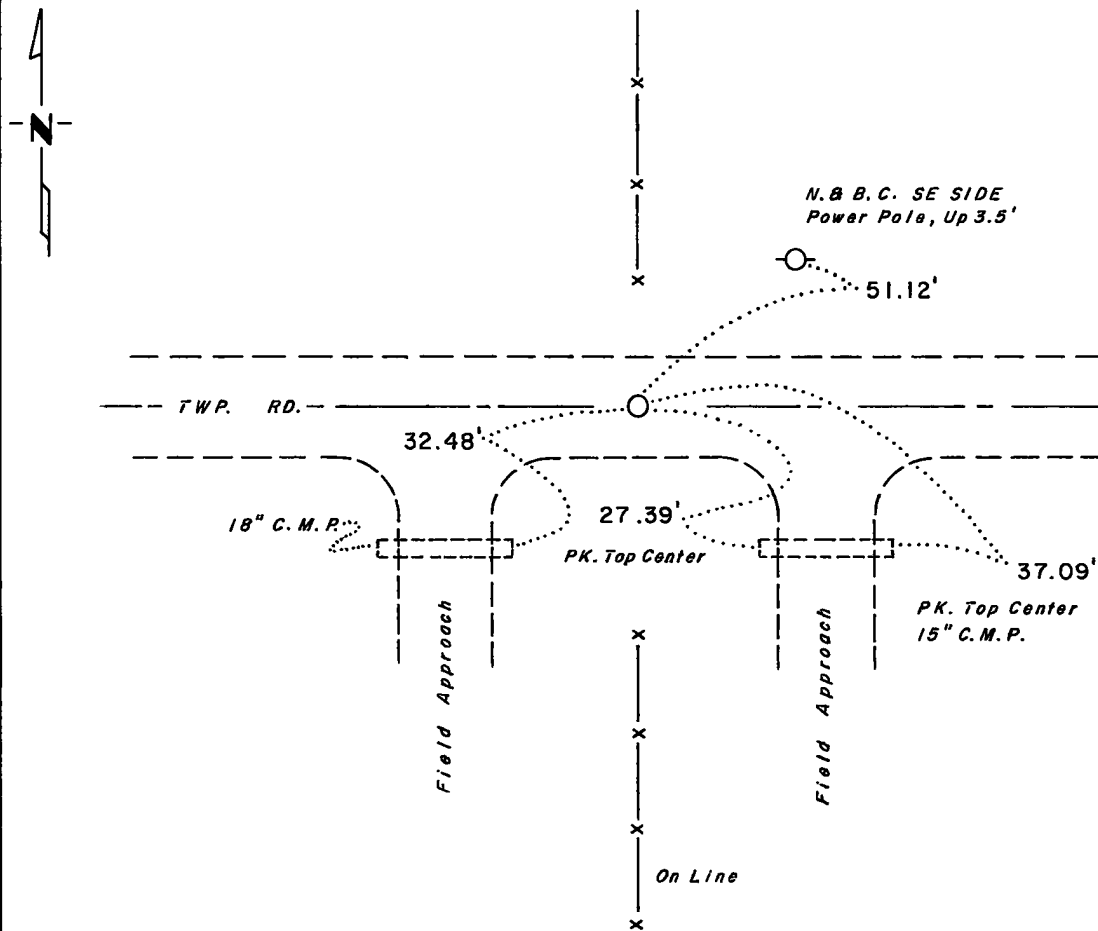
North Quarter Corner of Section 32, Township 114, Range 46, 5th P.M.

STATE OF MINNESOTA, County of YELLOW MEDICINE

At the corner location shown on the sketch:

- On 6-28-77 found a 15" x 10" x 8" Stone Sitting Upright, Down 2.5' 1.0' North of
DATE Centerline
- left monument as found, lowered monument, removed monument (explain)
- On 6-28-77 placed a 3/4" x 24" Iron Rod Over, Down 0.3'
DATE

SKETCH OF REFERENCE TIES



Statement of evidence relative to this corner location is on back of page.



I hereby certify that this document and the data contained herein was prepared by me or under my direct supervision.

Kay H. Stevenson 10-20-78
SIGNATURE DATE

Registration No. 12684

- Land Surveyor, Professional Engineer
- County Surveyor, County Engineer

COUNTY RECORDER
OFFICE OF THE YELLOW MEDICINE COUNTY
County of Yellow Medicine

I hereby certify that this document was filed in the County Records office at 1:05 P.M. on the 1 day of November A.D., 1978

COUNTY RECORDER Dorval J. Opdahl
YELLOW MEDICINE COUNTY
By Kay Dendahl, Deputy

DOCUMENT NO. 172780

Statement of Evidence:

North Quarter Corner, Section 32, Township 114, Range 46,
Yellow Medicine County.

This corner was originally established by the U.S. General Land Office survey in 1871. The government notes show corner marked with a wood post set in mound of earth with pits and trench dug around the mound.

In January, 1977, the DNR Bureau of Engineering contacted the Yellow Medicine County Offices of the Recorder and the Highway Engineer for corner information.

The following information was obtained from the Recorder in the large surveyors record book. On page 214 is a survey of section 32 by John Norgaard in 1910. He set a stone at line and split between the section corners, 2643' each way.

On page 436, is a survey of section 29 by Nogarrd in 1920. He found stone set by him several years ago, in line with fence south.

On June 28, 1977, we hired a backhoe operated by Pat Sterzinger of Ivanhoe to dig for evidence of this corner.

We found a 15" x 10" x 8" field stone setting upright down 30" below present road grade and 4" below old road grade. It was 1' north of centerline east-west township road and in line with fence south. We measured 2644.36' to the Northwest Corner Section 32.

Picture evidence of the corner is on file with the DNR Bureau of Engineering.