

CERTIFICATE OF LOCATION OF GOVERNMENT CORNER

Northeast Corner of Section 22, Township 115 N, Range 39 W, 5th P.M.

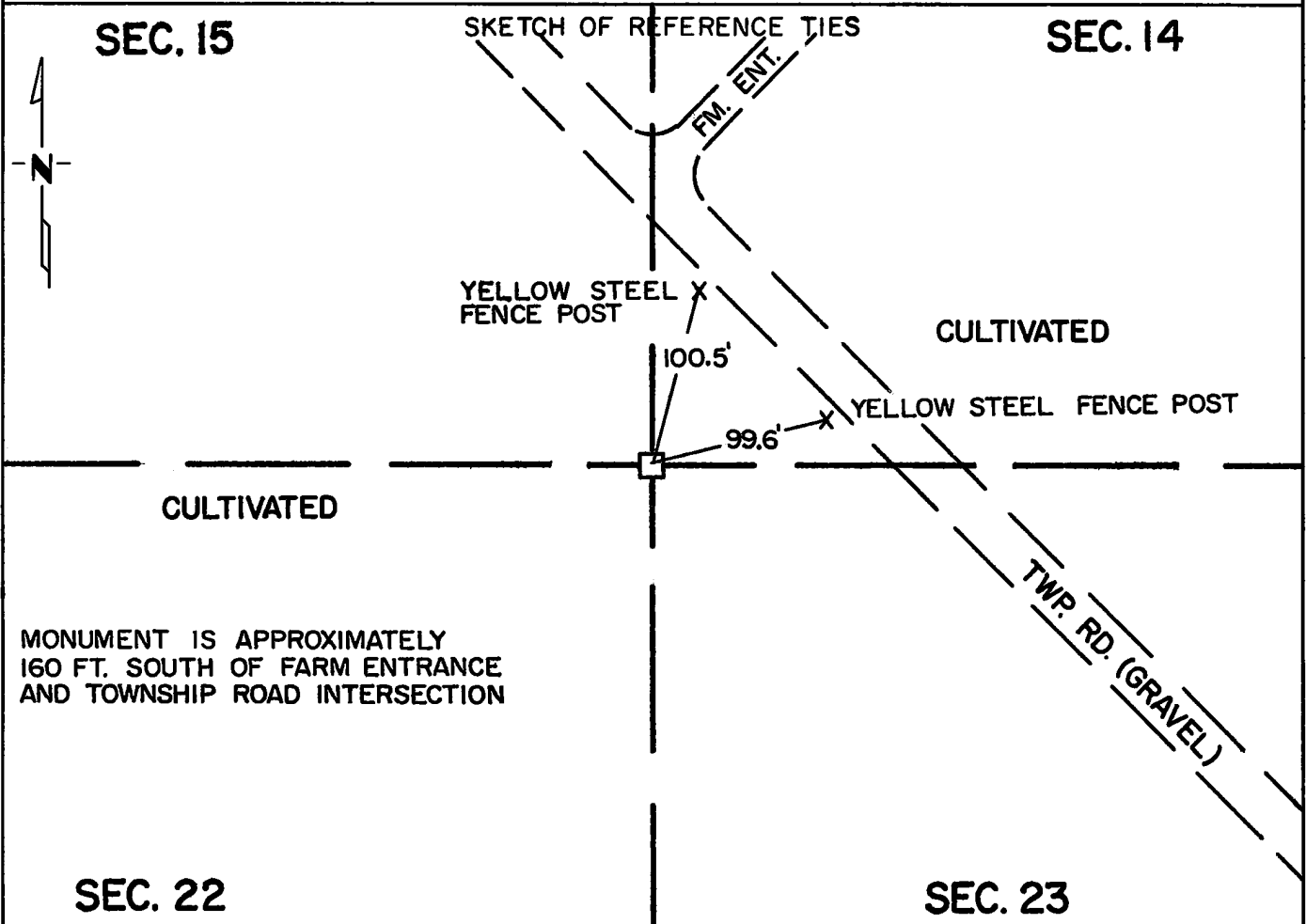
STATE OF MINNESOTA, County of Yellow Medicine

At the corner location shown on the sketch:

On July 10, 1974 found a 6 inch by 6 inch by 2 1/2 inch long granite monument
DATE
at ground surface

left monument as found, lowered monument, removed monument (explain)

On July 11, 1974 ~~placed~~ drilled a small depression in the top center of
DATE
the monument



Statement of evidence relative to this corner location is on back of page.

RECORDED
GRANTOR
GRANTEE
INDEXED

I hereby certify that this document and the data contained herein was prepared by me or under my direct supervision.

Robert C. Jones 10/5/79
SIGNATURE DATE

Registration No. 11864

Land Surveyor, Professional Engineer
 County Surveyor, County Engineer

OFFICE OF THE COUNTY RECORDER
YELLOW MEDICINE COUNTY
Yellow Medicine

I hereby certify that this document was filed in the Reg. of Deeds office at 9:15 A.M. on the 9 day of October A.D., 19 79

COUNTY RECORDER
YELLOW MEDICINE COUNTY Norman J. Opdahl

By Kay Nordahl, Deputy
DOCUMENT NO. 174829

Statement of Evidence: Northeast corner of Section 22, T115N, R39W, 5th P.M.

The original Public Land Survey was completed in 1864 by C. E. Davis and J. W. Webb Jr. A wood post was set in a mound of dirt with pits to mark the corner.

John Norgaard, the County Surveyor, found a stone in a dirt mound in 1901. He stated that he and other surveyors had previously used this monument as the section corner when subdividing adjacent sections. He set a 6" by 6" by 24" long granite monument at ground surface to mark the corner in 1901.

On July 10, 1974 a Minnesota Highway Department survey crew found the 6" by 6" by 24" granite monument projecting about 1 inch above the ground. The monument is in a cultivated field and is guarded by a $\frac{1}{4}$ " diameter by 4 foot high steel rod.

An analysis of this data provides a continuous chain of record perpetuating the location of the original Public Land Survey corner.

For details of survey analysis and 1974 electronic survey measurements, see the Survey Report for S.P. 8701-18 from 0.3 miles north of the Yellow Medicine River to Granite Falls on file in the Surveys Section, Minnesota Highway Department, Willmar, Minnesota.