

CERTIFICATE OF LOCATION OF GOVERNMENT CORNER

Northeast Corner of Section 4, Township 116, Range 41, 5th P.M.

STATE OF MINNESOTA, County of Yellow Medicine

At the corner location shown on the sketch:

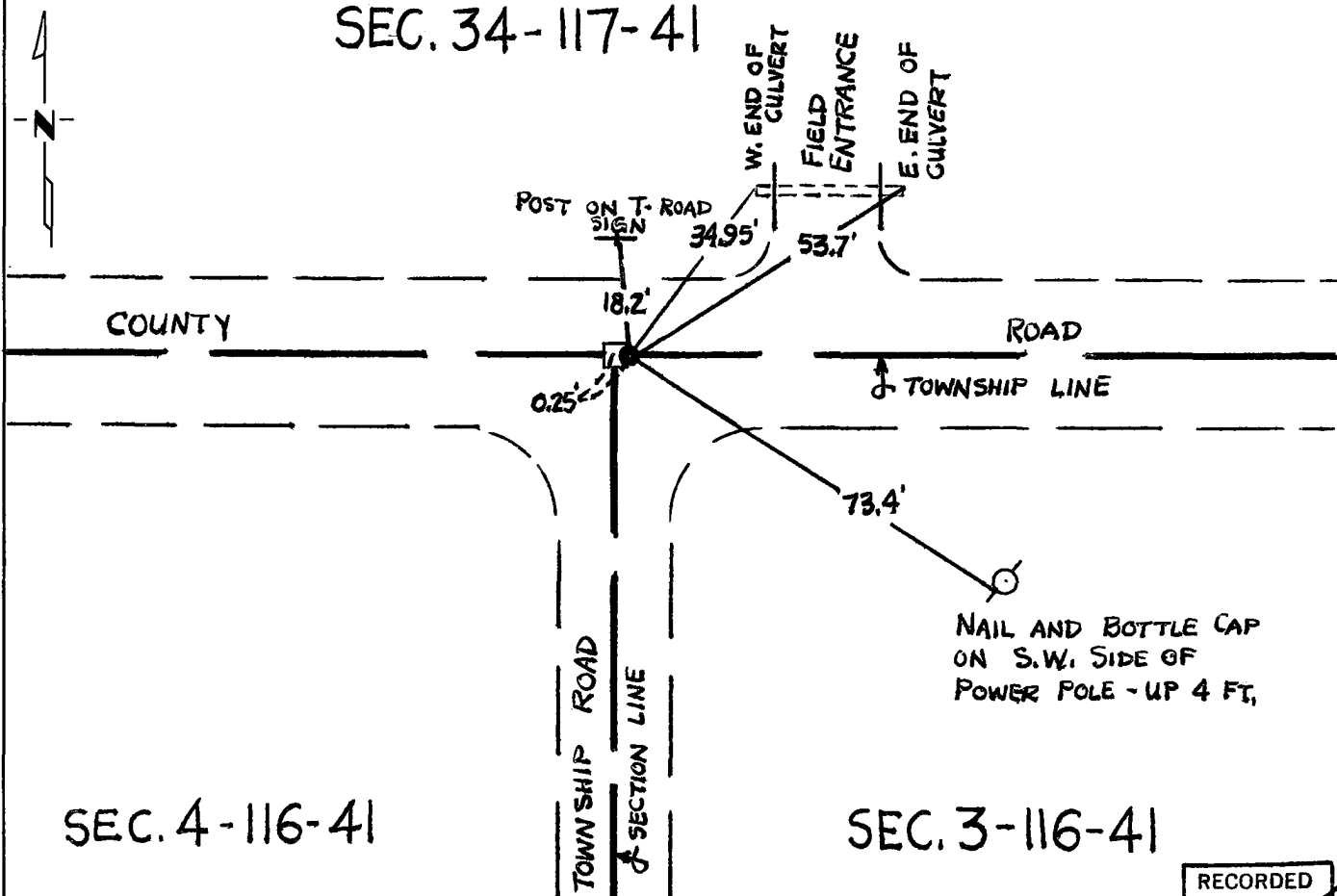
On Sept. 20, 1980 found a stone monument 1.75 feet below the road surface
DATE

left monument as found, lowered monument, removed monument (explain)

On Sept. 20, 1980 placed a 5/8" diameter by 2' long iron re-bar along the east
DATE
edge of the stone, 3" east of the center of the stone, and 2" below road
surface.

SKETCH OF REFERENCE TIES

SEC. 34-117-41



SEC. 4-116-41

SEC. 3-116-41

RECORDED
GRANTOR
GRANTEE
INDEXED

Statement of evidence relative to this corner location is on back of page.

I hereby certify that this document and the data contained herein was prepared by me or under my direct supervision.

Robert C. James 9/24/80
SIGNATURE DATE

Registration No. 11864

Land Surveyor, Professional Engineer

County Surveyor, County Engineer

OFFICE OF THE COUNTY RECORDER
County of Yellow Medicine

I hereby certify that this document was filed in the Co. Recorders office at 1:00 P.M. on the 25 day of September A.D., 19 80

County Recorder Norman J. Opdahl

By Kay Nordahl, Deputy

DOCUMENT NO. 176890

Statement of Evidence: Northeast Corner of Section 4 - 116 - 41

- 1858 - The Fourth Standard Parallel was originally surveyed by William Neely.
- 1865 * The original government survey of the sections in the township was done by Charles Davis and J.W. Webb Jr. A wood pest was set in a dirt mound to mark the corner.
- 1901 - Jehn Nergaard, County Surveyor, found evidence of the government mound and set a 6" X 6" X 24" jasper stone monument in the mound to mark the corner.
- 1939 - The Yellow Medicine County Highway Department/^{found}the stone at the corner.
- 1949 - Same as 1939
- 1952 - Same as 1939
- 1980 - Robert C. Jones found a stone monument in place 1.75 feet below the road surface. Placed a 5/8" diameter by 2' long iron re-bar along the east edge of the stone. Therefore, the iron re-bar is 3" east of the actual location of the section corner. The top of the re-bar is about 2" below the road surface.

Survey records show a continuous chain of evidence that the stone monument is at the original location of the section corner.

RECORDED
GRANTOR
GRANTEE
INDEXED

176890
OFFICE OF COUNTY RECORDER }
County of Yellow Medicine, Minn. } ss

I hereby certify that the within instrument was filed in this office for record on the 25 day of Sept. A. D. 19 80, at 1:00 o'clock P. M. and was duly recorded in book of Page placed on file

Norman J. Opdahl
County Recorder

By Kay Nordahl
Deputy