

# CERTIFICATE OF LOCATION OF GOVERNMENT CORNER

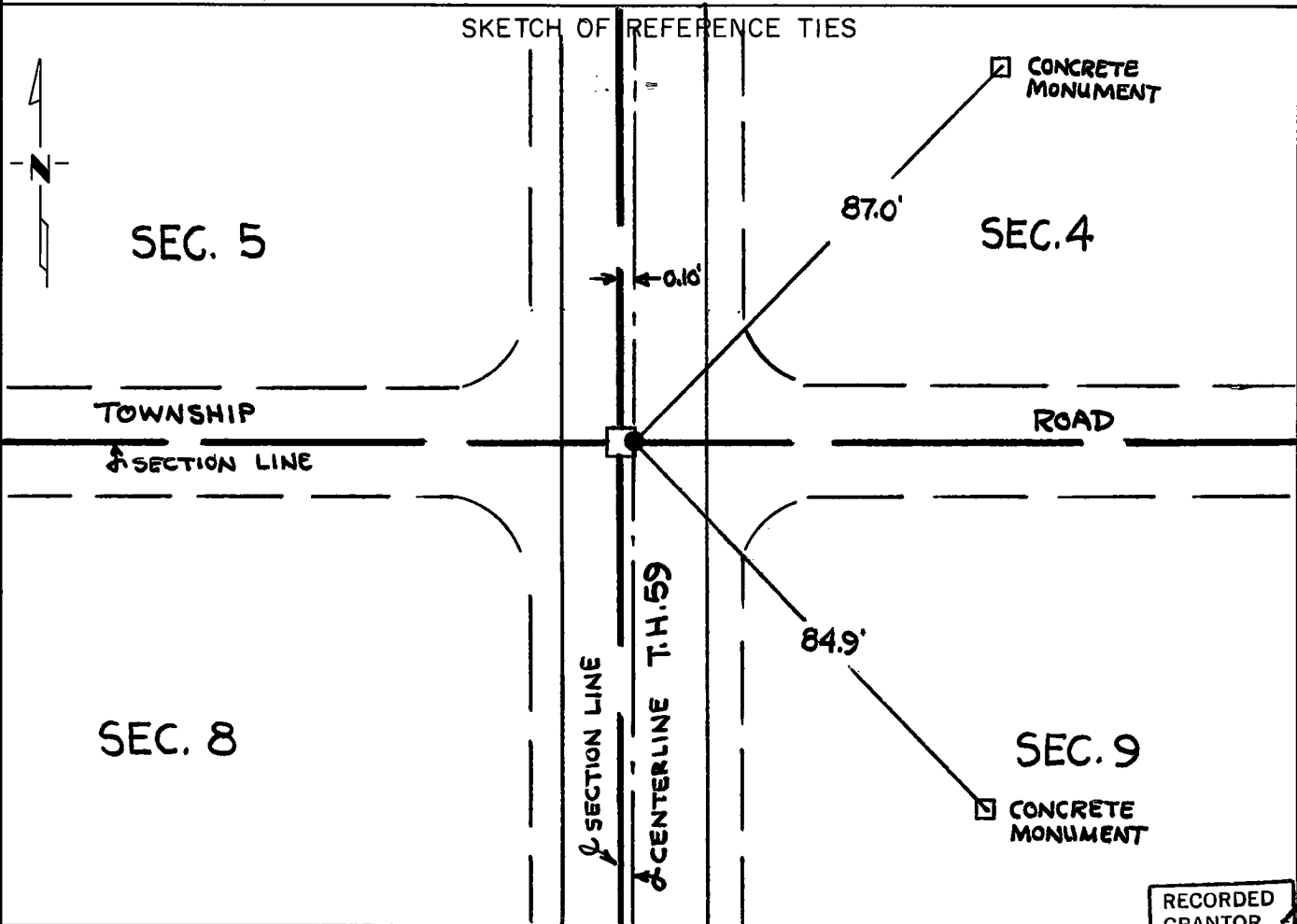
Northeast Corner of Section 8, Township 116, Range 41, 5th P.M.  
Also southwest corner of Sec. 4  
STATE OF MINNESOTA, County of Yellow Medicine

At the corner location shown on the sketch:

On Sept. 20, 1980 found an iron pin near road surface which is one-tenth of a  
DATE foot east of the section corner

left monument as found,  lowered monument,  removed monument (explain)

On \_\_\_\_\_ placed a Left monument as found  
DATE \_\_\_\_\_



RECORDED  
GRANTOR  
GRANTEE  
INDEXED

Statement of evidence relative to this corner location is on back of page.

I hereby certify that this document and the data contained herein was prepared by me or under my direct supervision.

Robert Jones 9/24/80  
SIGNATURE DATE

Registration No. 11864  
 Land Surveyor,  Professional Engineer  
 County Surveyor,  County Engineer

OFFICE OF THE COUNTY RECORDER  
County of Yellow Medicine

I hereby certify that this document was filed in the Co. Recorders office at 1:10 P.M. on the 25 day of September A.D., 1980

County Recorder Norman J. Opdahl  
By Kay Nordahl, Deputy  
DOCUMENT NO. 176892

Statement of Evidence:

Northeast corner of Section 8 - 116 - 41

- 1865 - The original government survey was done by Charles Davis and J.W. Webb Jr. A wood pest was set in a dirt mound to mark the corner.
- 1901 - John Norgaard, County Surveyor, found evidence of the government mound and placed a 6" X 6" X 24" jasper stone monument in the mound to mark the corner.
- 1946 - A Minnesota Highway Department survey crew found the stone monument and placed an iron pin over the monument and 0.10 feet east of the center of the monument on the centerline of T.H. 59.
- 1966 - A Minnesota Highway Department survey crew located the iron pin.
- 1980 - Robert C. Jones located the iron pin and the reference ties.

Survey records show a continuous chain of evidence that the iron pin at T.H. 59 engineer's station 317435.1 is located one-tenth of a foot east of the original location of the section corner.

RECORDED
GRANTOR
GRANTEE
INDEXED

176892

OFFICE OF COUNTY RECORDER }  
County of Yellow Medicine, Minn. } 88

I hereby certify that the within instrument was filed in this office for record on the 25 day of Sept. A. D. 19 80, at 1:10 o'clock P. M. and was duly recorded in book placed at on file Page —

Norman J. Opdahl  
County Recorder

By Ray Nordahl  
Deputy