

# CERTIFICATE OF LOCATION OF GOVERNMENT CORNER

North Quarter Corner of Section 4, Township 116, Range 41, 5th P.M.

STATE OF MINNESOTA, County of Yellow Medicine

At the corner location shown on the sketch:

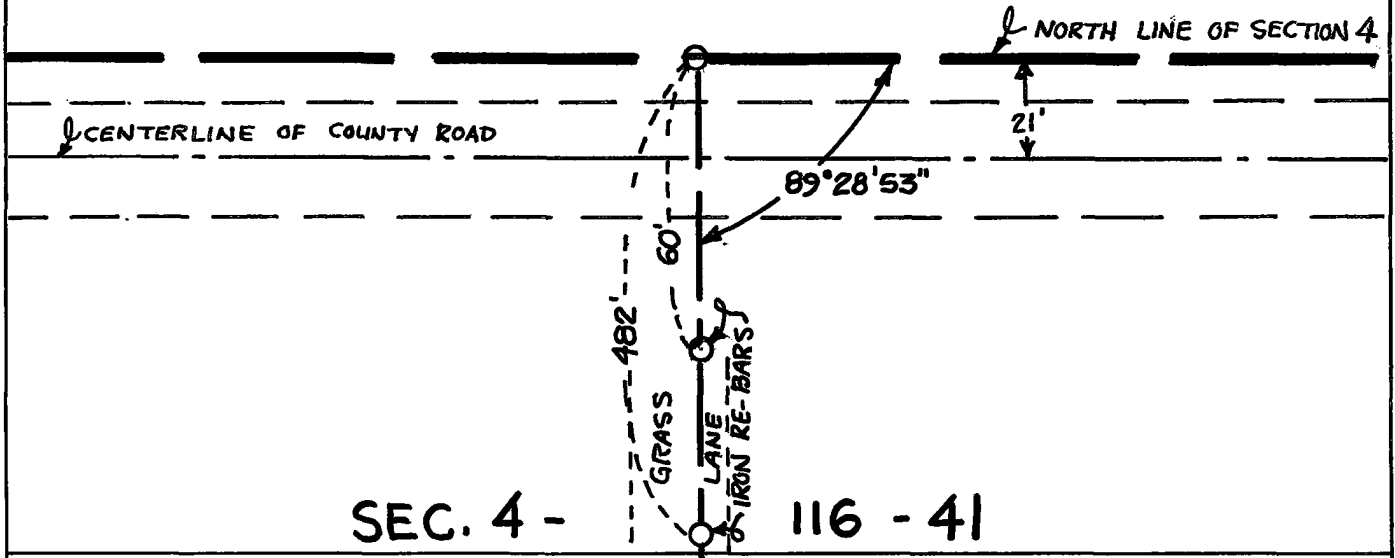
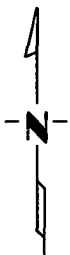
On Oct. 7, 1980 found a nothing marking the corner  
DATE

left monument as found,  lowered monument,  removed monument (explain)

On Oct. 7, 1980 placed a 5/8" diameter by 24" long iron re-bar 21' north  
of the <sup>DATE</sup>centerline of a county road

### SKETCH OF REFERENCE TIES

## SEC. 34-117-41



Statement of evidence relative to this corner location is on back of page.

I hereby certify that this document and the data contained herein was prepared by me or under my direct supervision.

Robert C Jones 10/21/80  
SIGNATURE DATE

Registration No. 11864

- Land Surveyor,  Professional Engineer  
 County Surveyor,  County Engineer

OFFICE OF THE COUNTY RECORDER  
County of Yellow Medicine

I hereby certify that this document was filed in the Co. Record. office at 9:30 A.M. on the 23 day of October A.D., 19 80

County Recorder, Norman J. Opdahl

By Kay Nerdahl, Deputy  
DOCUMENT NO. 177048

Statement of Evidence: North Quarter Corner of Section 4-116-41

- 1858 - The Fourth Standard Parallel was originally surveyed by William Neely.
- 1865 - The original government survey of the sections in the township was done by Charles Davis and J. W. Webb Jr. A wood post was set in a dirt mound to mark the corner.
- 1980 - No record was found that anything has been set to mark this corner since the original government survey in 1865. R. C. Jones set the corner midway and on line between the northwest and northeast corners of the section at the lost location. The corner as set is 21 feet north of the centerline of a county road in the ditch.