

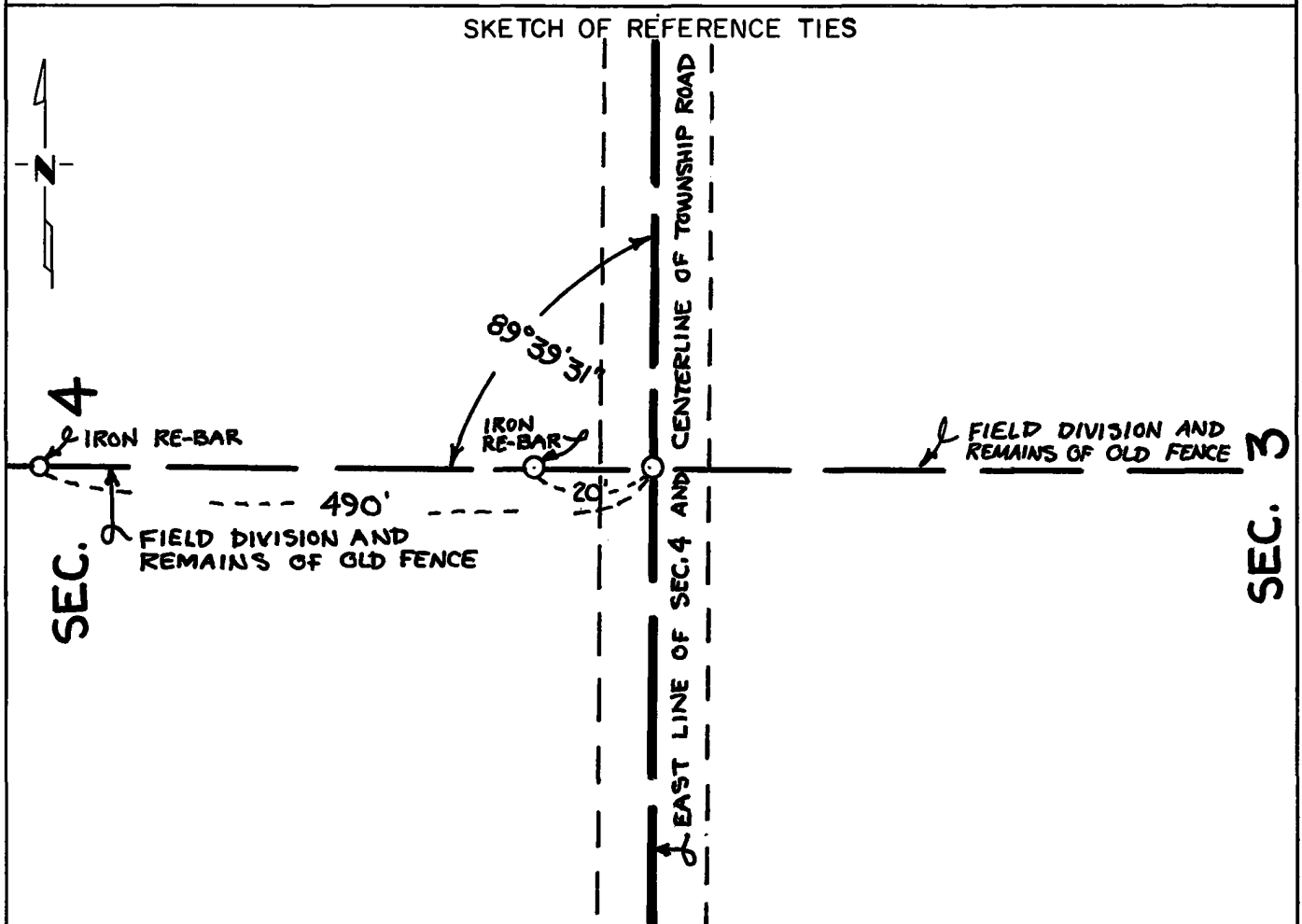
CERTIFICATE OF LOCATION OF GOVERNMENT CORNER

East Quarter Corner of Section 4, Township 116, Range 41, 5th P.M.

STATE OF MINNESOTA, County of Yellow Medicine

At the corner location shown on the sketch:

- On Oct. 7, 1980 found a nothing marking the corner
DATE
- left monument as found, lowered monument, removed monument (explain)
- On Oct. 7, 1980 placed a 5/8" diameter by 24" long iron re-bar on the
DATE
centerline of a township road



Statement of evidence relative to this corner location is on back of page.

I hereby certify that this document and the data contained herein was prepared by me or under my direct supervision.

Robert Jones 10/21/80
SIGNATURE DATE

Registration No. 11864

- Land Surveyor, Professional Engineer
- County Surveyor, County Engineer

OFFICE OF THE COUNTY RECORDER
 County of Yellow Medicine

I hereby certify that this document was filed in the Co. Recorder's office at 9:35 A.M. on the 23 day of October A.D., 19 80
 County Recorder, Norman J. Opdahl

By Kay Nordahl, Deputy
 DOCUMENT NO. 177049

Statement of Evidence: East Quarter Corner of Section 4-116-41

- 1865 - The original government survey of the sections in the township was done by Charles Davis and J. W. Webb Jr. A wood post was set in a dirt mound to mark the corner.
- 1980 - No record was found that anything has been set to mark this corner since the original government survey in 1865. R. C. Jones set the corner on line between the northeast and southeast corners of the section and on line with field divisions and the remains of old fence lines east and west. The fences and field divisions have probably been regarded as the quarter section lines for many, many years. This location is 36.25 feet south of the lost location. However, it is 2660.00 feet north of the southeast corner of the section and according to the section breakdown, results in there being nearly 163 acres in the southeast quarter of the section.