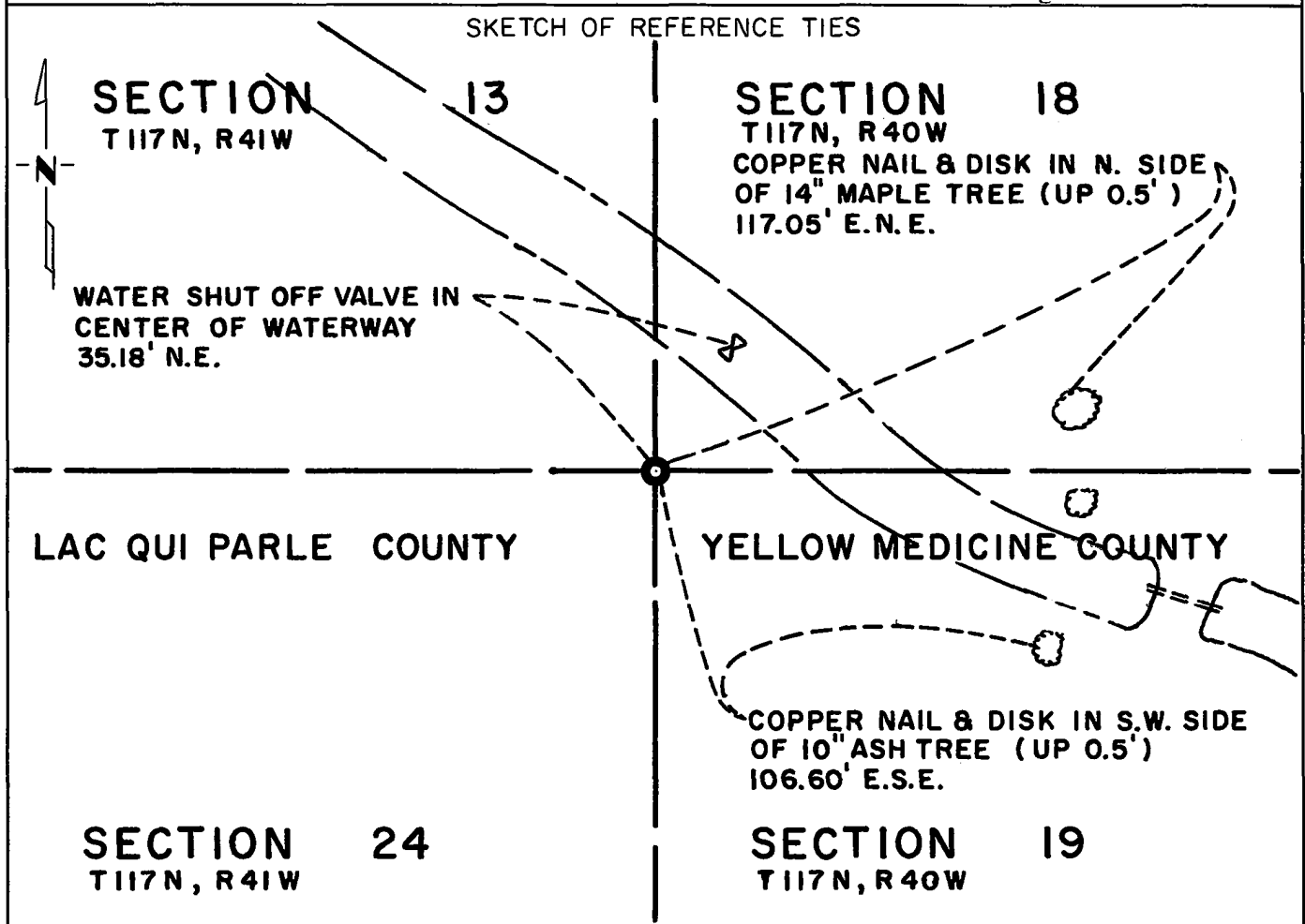


# CERTIFICATE OF LOCATION OF GOVERNMENT CORNER

Northwest Corner of Section 19, Township 117N, Range 40W, 5<sup>TH</sup> P.M.  
 STATE OF MINNESOTA, County of Yellow Medicine

At the corner location shown on the sketch:

- On \_\_\_\_\_ found a \_\_\_\_\_  
DATE
- left monument as found,  lowered monument,  removed monument (explain)
- On June 9, 1979 placed a Mn/DOT Cast Iron Monument over 3/4 inch by 24 inch DATE iron pin with top of C.I. Monument one inch below the ground.



Statement of evidence relative to this corner location is on back of page.

I hereby certify that this document and the data contained herein was prepared by me or under my direct supervision.

David K. Kohanek 11/19/80  
SIGNATURE DATE

Registration No. 12042

- Land Surveyor,  Professional Engineer  
 County Surveyor,  County Engineer

OFFICE OF THE COUNTY RECORDER  
 County of Yellow Medicine

I hereby certify that this document was filed in the Co. Recorders office at 2:25 P.M. on the 25 day of November A.D., 19 80

County Recorder Dorman J. Opdahl

By Kay Nordahl, Deputy

DOCUMENT NO. 177224

**Statement of Evidence:** Northeast Corner, Section 24, T117N, R41W.

- 1858 - The original Public Land Survey was completed by J. W. Myers. A wood post was set above deposited charcoal in a dirt mound with trenches and pits to mark the corner.
- 1895 - L. R. Moyer, J. Peterman, and G. Michel, County Surveyors of Chippewa, Yellow Medicine, and Lac Qui Parle Counties, resurveyed the east boundary of Camp Release Township. This section corner was found marked by a wood post in a mound. The corner was perpetuated by planting a 24" X 13" X 14" stone marked with a drill hole in top in place of the wood post.
- 1901 - Lycurgus Moyer, Chippewa County Surveyor, made a survey in Section 13 and the section corner was shown to be 39.35 chains (2597.1 feet) from the north quarter corner of Section 24.
- 1912 - Sumner Moyer found the marked stone for this section corner.
- 1921 - M. E. Chamberlin made a survey in Government Lot 2 of Section 13 but his records do not state the type of monument found for this corner.
- 1927 - The Minnesota Highway Department constructed a new road (T.H. 212) through Section 24 in Camp Release Township and Section 19 in Stony Run Township and the east line of Section 24 intersected the centerline of Trunk Highway 212 at P.O.T. 196+20, 1569.0 feet north of the east quarter corner of Section 24.
- 1932 - Trunk Highway 212 was surfaced with concrete pavement by the Minnesota Highway Department and iron pipe right-of-way monuments were placed on the section line 50 and 80 feet from the centerline.
- 1973 - In December, 1973, Theodore Chamberlain, Registered Land Surveyor, found the two right-of-way monuments north of Trunk Highway 212 that were placed on the section line in 1932. These two monuments were used for a subdivision plat in Section 19 of Stony Run Township.
- 1976 - On October 20, 1976, a Minnesota Department of Transportation survey crew found the two iron pipe right-of-way monuments placed on the section line in 1932. A straight line through these monuments to the east quarter corner of Section 24 intersects the centerline of Trunk Highway 212 at P.O.T. 196+19.87 and 1569.04 feet north of the east quarter corner. This compares to the 1927 survey.

An analysis of the record data compared to the field measurements indicates the obliterated location for this corner is at the intersection of a straight line from the northwest corner through the north quarter of Section 24 and a straight line from the east quarter corner of Section 24 through the right-of-way monuments placed in 1932. The distance from this obliterated location to the north quarter corner is 2597.46 feet compared to Moyer's 1901 distance of 2597.1 feet. The distance to the east quarter corner also compared to Moyer's 1895 distance when the original corner was found. This obliterated location is also in agreement with the 1927 Minnesota Highway Department survey and the 1973 Hacker Height's plat survey.

- 1978 - On November 6, 1978, a Minnesota Department of Transportation survey crew set a 3/4" X 24" iron pin at the obliterated location for this section corner. Searched the immediate area with a metal locator with no indication of an iron monument. Also probed the area for the stone set in 1895, but could have been removed when the golf course was constructed. On June 9, 1979, found the 3/4" X 24" iron pin, lowered iron pin and set a Mn/DOT cast iron monument over the iron pin to perpetuate this section corner for future surveys. For electronic survey measurements and additional information relative to this corner, see survey report for S.P. 3706, T.H. 212, on file in the Survey Section, Minnesota Department of Transportation, Willmar, Minn.