

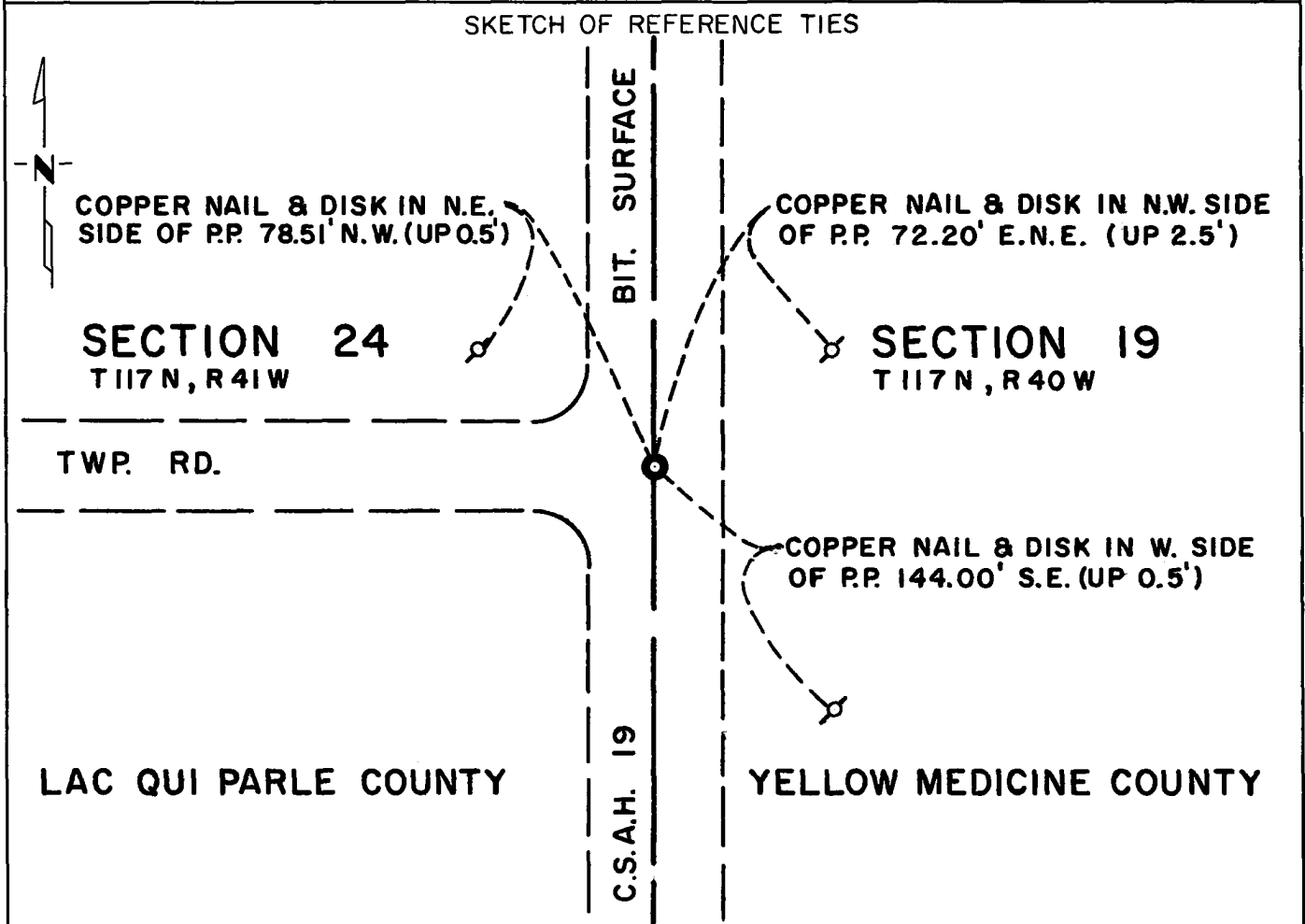
CERTIFICATE OF LOCATION OF GOVERNMENT CORNER

West Quarter Corner of Section 19, Township 117N, Range 40W, 5th P.M.

STATE OF MINNESOTA, County of Yellow Medicine

At the corner location shown on the sketch:

- On Oct. 21, 1976 found a nail and reference ties set by county in place
DATE
of stone monument
 left monument as found, lowered monument, removed monument (explain)
- On Oct. 21, 1976 placed a Mn/DOT Cast Iron monument in place of found nail
DATE
with top of C.I. monument flush with bituminous surface.



Statement of evidence relative to this corner location is on back of page.

I hereby certify that this document and the data contained herein was prepared by me or under my direct supervision.

David K. Koranek 11/19/80
SIGNATURE DATE

Registration No. 12042
 Land Surveyor, Professional Engineer
 County Surveyor, County Engineer

OFFICE OF THE COUNTY RECORDER
County of Yellow Medicine

I hereby certify that this document was filed in the Co. Recorders office at 2:30 P.M. on the 25 day of November A.D., 19 80

County Recorder Norman J. Opdahl
By Kay Nordahl, Deputy
DOCUMENT NO. 177225

Statement of Evidence: West Quarter Corner, Section 19, T117N, R40W

- 1858 - The original Public Land Survey was completed by J. W. Myers. A wood post was set above deposited charcoal in a dirt mound with trenches and pits to mark the corner.
- 1871 - Lycurgus Moyer, Chippewa County Surveyor, surveyed the east-west quarter line of Sections 22, 23 and 24, finding the quarter post for this corner and laying out a road with the center of the road on the quarter line to the old government road.
- 1877 - A township road order calls for a road to be built along the east line of Sections 24 and 25, ending at this corner.
- 1886 - C. M. Andersen re-established or re-run the range line finding the old quarter post and stone marking this corner.
- 1895 - L. R. Moyer, J. Peterman and G. Michel, County Surveyors of Chippewa, Yellow Medicine and Lac Qui Parle Counties, resurveyed the east boundary of Camp Release Township. Found this quarter corner marked by a stone claimed to be the original corner, and perpetuated the corner with a 16" X 15" X 10" stone and a witness corner.
- 1912 - Moyer found the old stone set for the quarter post some years ago. Also found a witness stone 50 links south of west.
- 1974 - The Yellow Medicine County Highway Department regarded County Road No. 19 and a stone monument was found at intersection of north, south and west road, at engineer's station 314+31.4. Five reference ties were placed for this corner. After a 2.5 foot cut at this quarter corner removing the stone, a nail was set by the county using the reference ties.
- 1975 - The Minnesota Highway Department found the nail marking the quarter corner along with two of the reference ties.
- 1976 - On October 21, 1976, a Minnesota Department of Transportation survey crew found the nail in centerline of County Road No. 19 below the bituminous surface. Removed nail and replaced with a Mn/DOT Cast Iron monument with top of cast iron monument flush with the bituminous surface.

An analysis of the record data compared to the 1976 field measurements indicates the found nail is in agreement with the past surveys providing a continuous chain of perpetuation of the original Public Land Survey corner.

For electronic survey measurements and additional information relative to this corner, see Survey Report for S.P. 3706, T.H. 212, on file in the Surveys Section, Minnesota Department of Transportation, Willmar, Minnesota.