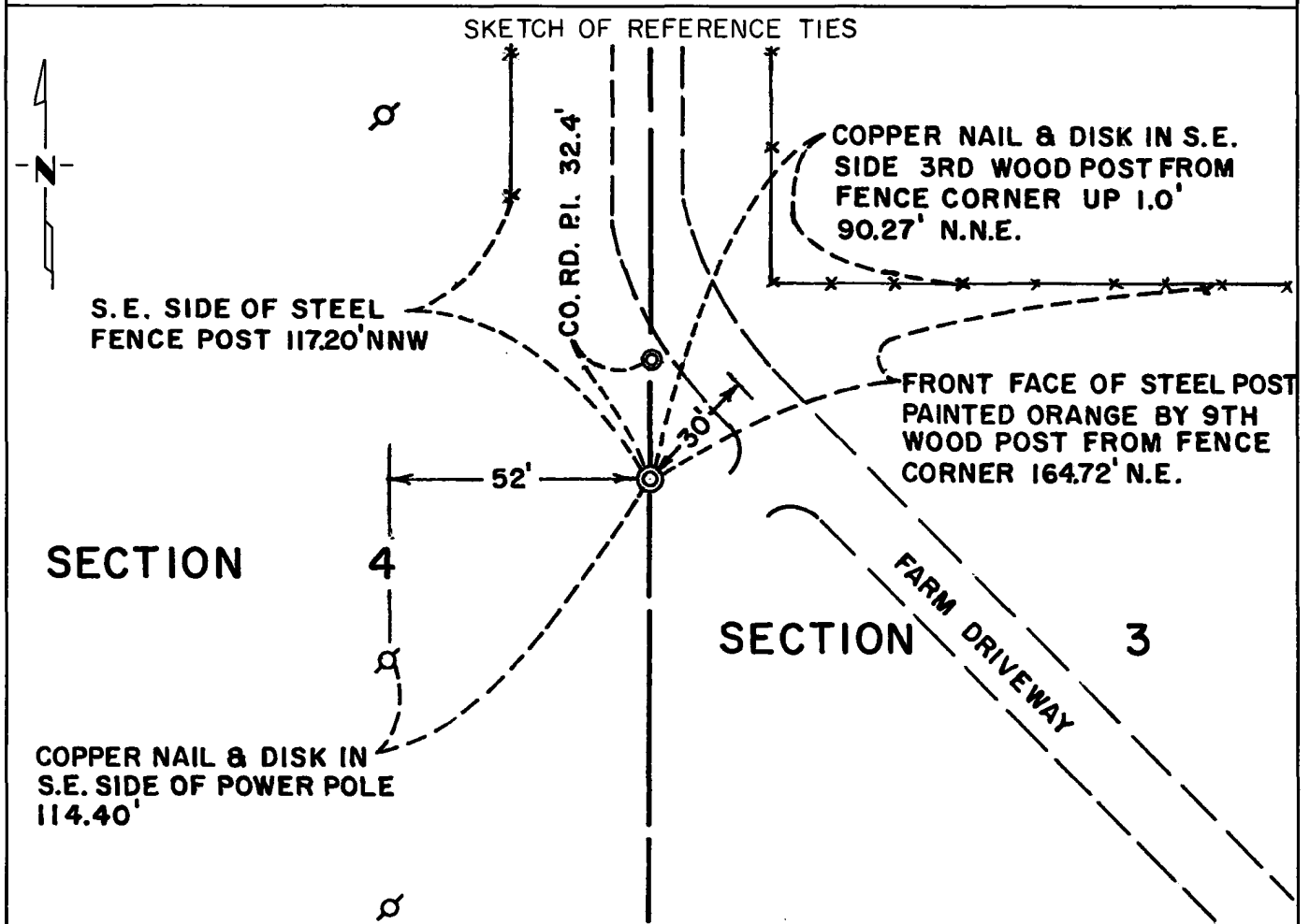


CERTIFICATE OF LOCATION OF GOVERNMENT CORNER

East Quarter _____ Corner of Section 4, Township 116N, Range 40W, 5th P.M.
 STATE OF MINNESOTA, County of Yellow Medicine

At the corner location shown on the sketch:

- On June 16, 1980 found a field stone measuring 18"x20"x6" about 6" below the ground
DATE
- left monument as found, lowered monument, removed monument (explain)
- On June 17, 1980 placed a 3/4"x24" iron pin flush with top of stone, placed Mn/DOT cast iron monument (6" long) over stone - top is flush with ground
DATE



Statement of evidence relative to this corner location is on back of page.

I hereby certify that this document and the data contained herein was prepared by me or under my direct supervision.

Robert Jensen 2/12/81
SIGNATURE DATE

Registration No. 11864

- Land Surveyor, Professional Engineer
- County Surveyor, County Engineer

OFFICE OF THE COUNTY RECORDER
 County of Yellow Medicine



I hereby certify that this document was filed in the Co. Recorders office at 9:35 A.M. on the 17 day of February A.D., 19 81

County Recorder Norman J. Opdahl

By Kay Nerdahl, Deputy

DOCUMENT NO. 177653

Statement of Evidence: East Quarter Corner of Section 4-116-40

- 1865 - The original Public Land Survey was done by Charles E. Davis. A wood post was set in a dirt mound and pits were dug to mark the corner.
- 1874 - L. R. Moyer found the government corner and used it for a survey in Section 3-116-40.
- 1896 - L. R. Moyer found the government corner and set a field stone to mark the corner.
- 1980 - D. K. Kohanek, R.L.S. with Mn/DOT, found an 18"x20"x6" granite about 6" below ground. Set a $\frac{3}{4}$ "x24" iron pin on south side of the stone and drove the top of the pin flush with the top of the stone. Set a Mn/DOT cast iron monument over the stone so the top of the monument is flush with the ground. The cast iron monument is 6" long.

Record evidence indicates that the found stone is a perpetuation of the location of the original government corner. This location is 1 foot west and 2 feet north of the lost location.

For further survey information contact the Mn/DOT Surveys Section in Willmar, Mn.