

# CERTIFICATE OF LOCATION OF GOVERNMENT CORNER

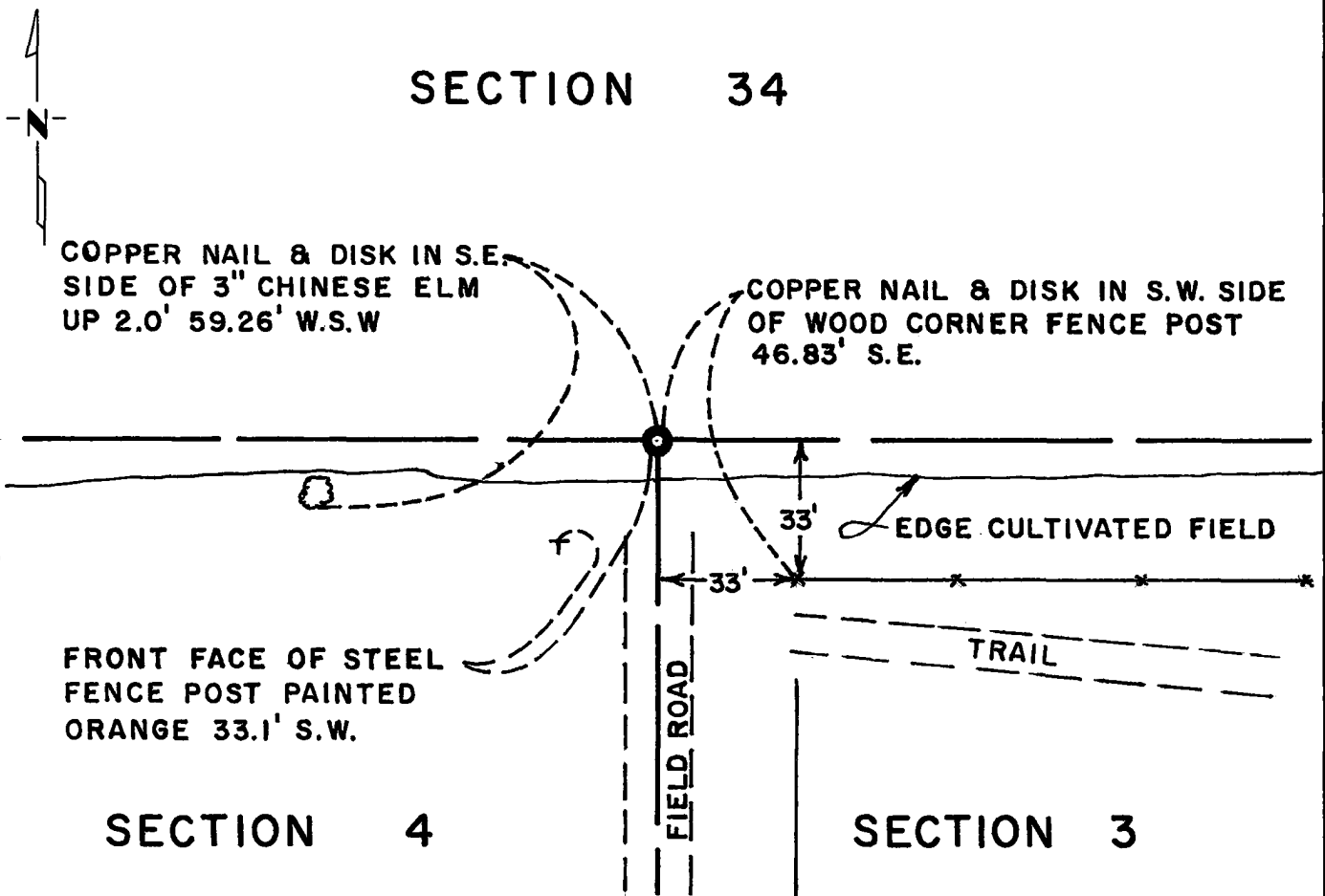
Northeast Corner of Section 4, Township 116N, Range 40W, 5th P.M.

STATE OF MINNESOTA, County of Yellow Medicine

At the corner location shown on the sketch:

- On June 17, 1980 found a Hole where a 6"x6"x24" granite monument had been  
DATE  
found in 1963.
  - left monument as found,  lowered monument,  removed monument (explain)
- On June 17, 1980 placed a 3/4"x24" iron pin below a 4" diameter by 20" long cast  
DATE  
iron monument - the top of the cast iron mon. is 14" below ground

SKETCH OF REFERENCE TIES



Statement of evidence relative to this corner location is on back of page.

I hereby certify that this document and the data contained herein was prepared by me or under my direct supervision.

Robert Jones 2/12/81  
SIGNATURE DATE

Registration No. 11864

- Land Surveyor,  Professional Engineer
- County Surveyor,  County Engineer

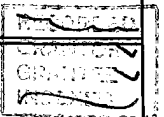
OFFICE OF THE COUNTY RECORDER  
 County of Yellow Medicine

I hereby certify that this document was filed in the Co. Recorders office at 9:45 A.M. on the 17 day of February A.D., 19 81

County Recorder Norman J. Opdahl

By Key Nordahl, Deputy

DOCUMENT NO. 177655



Statement of Evidence: Northeast Corner of Section 4, T116N, R40W

- 1858 - The original Public Land Survey for the Fourth Standard Parallel was made by William J. Neely.
- 1865 - The original Public Land Survey to divide T116N, R40W into sections was done by Charles E. Davis. A wood post was set in a dirt mound and pits were dug to mark the corner.
- 1874 - L.R. Moyer found the government corner and used for a survey in Section 3-116-40.
- 1896 - L.R. Moyer found the old government post and set a field stone to mark the corner.
- 1902 - John Norgaard, Yellow Medicine County Surveyor, found a stake and a field stone marking the corner and set a 6"x6"x24" granite monument to mark the corner.
- 1941 - A Yellow Medicine County Highway Department survey crew found the granite monument.
- 1963 - A Yellow Medicine County Highway Department survey crew found the granite monument.
- 1980 - D.K. Kohanek, R.L.S. with Mn/DOT, found that the granite monument had been removed. It was in a pile of rocks somewhere east of the location of the section corner. In talking with Glen Hildahl, an adjacent property owner, and with Ron O'Toole, surveyor with the County Highway Department he determined that the corner should be about 33 feet north and 33 feet west of a fence corner in line with field road to the south. A careful excavation was made in the plowing and a square hole was found that fit the dimensions of the granite monument exactly. A  $\frac{3}{4}$ "x24" iron pin was placed below a standard Mn/DOT cast iron monument in the found hole. The top of the cast iron monument is 14" below ground.

The location of the found hole is accepted as the location of the N.E. Cor. of Sec. 4 because record evidence indicates this is the perpetuation of the original P.L.S. corner and it fits the location where Mr. Hildahl and Mr. O'Toole last saw the granite monument in place.

For further survey information, contact the Mn/DOT Surveys Section in Willmar, Mn.