

CERTIFICATE OF LOCATION OF GOVERNMENT CORNER

East Quarter _____ Corner of Section 32, Township 117N, Range 40W, 5th P.M.

STATE OF MINNESOTA, County of Yellow Medicine

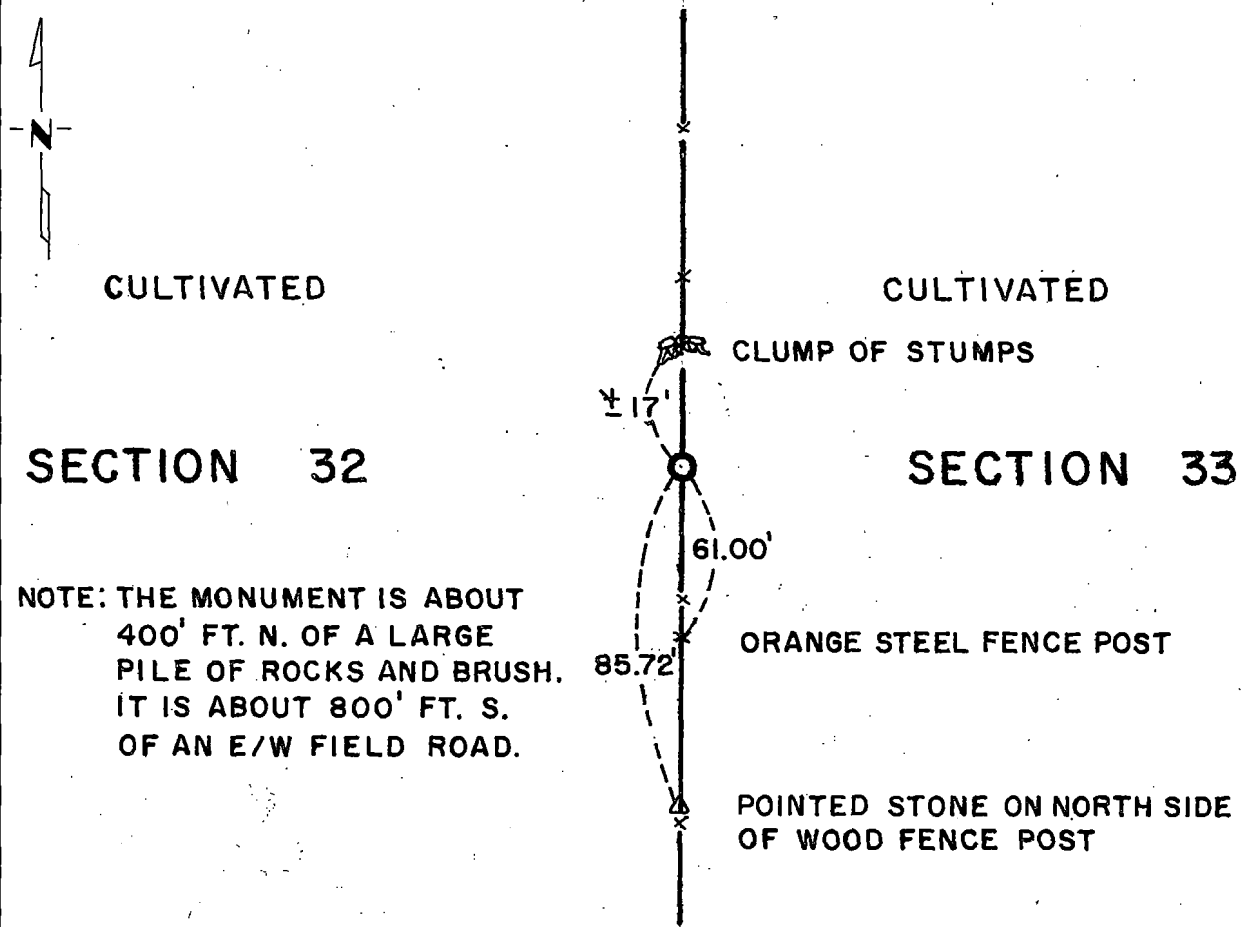
At the corner location shown on the sketch:

On Apr. 24, 1981 found a nothing to mark the corner
DATE

left monument as found, lowered monument, removed monument (explain)

On Apr. 24, 1981 placed a cast iron monument so the top is 2" above ground -
DATE
a 3/4" x 24" iron pin was set below the monument

SKETCH OF REFERENCE TIES



NOTE: THE MONUMENT IS ABOUT 400' FT. N. OF A LARGE PILE OF ROCKS AND BRUSH. IT IS ABOUT 800' FT. S. OF AN E/W FIELD ROAD.

Statement of evidence relative to this corner location is on back of page.

I hereby certify that this document and the data contained herein was prepared by me or under my direct supervision.

Robert Jones 4/29/81
SIGNATURE DATE

Registration No. 11864

- Land Surveyor, Professional Engineer
 County Surveyor, County Engineer

OFFICE OF THE COUNTY RECORDER
 County of Yellow Medicine

I hereby certify that this document was filed in the Co. Recorders office at 8:50 A.M. on the 8 day of May A.D., 19 81

County Recorder Norman J. Orsman

By _____, Deputy

DOCUMENT NO. 178068

Statement of Evidence: East Quarter Corner Section 32-117-40

- 1865 - The original Public Land Survey was made by James Watson Webb Jr. A wood post was set in a dirt mound and trenches and pits were dug to mark the corner.
- 1887 - L. R. Moyer, County Surveyor, found an old stake and set a stone to mark the corner. Moyer found the distance from the E $\frac{1}{4}$ Cor. of Sec. 32 to the E $\frac{1}{4}$ Cor. Sec. 33 to be 80.29 chains (5299.14').
- 1914 - John Norgaard, County Surveyor, found the stone marking the corner. He showed the distance from the S.E. corner of Section 32 to the E $\frac{1}{4}$ corner of Section 32 to be 2646 feet.
- 1927 - John Norgaard again found the stone and showed the same distance from the S.E. Cor. to the E $\frac{1}{4}$ Cor. He also showed the distance from the E $\frac{1}{4}$ Cor. of Sec. 32 to the E $\frac{1}{4}$ Cor. of Sec. 33 to be 5300 feet which closely agrees with Moyer's 1887 survey.
- 1981 - R. C. Jones, R.L.S., and a Mn/DOT survey crew searched an area about 4 feet wide by 20 feet long along a north/south fence line and about 2646 feet north of the S.E. Cor. of Section 32. Nothing was found to mark the corner.

The corner was set on the north/south fence line and 2646 feet north of the S.E. Cor. of Section 32 according to Norgaard's 1914 & 1927 surveys. This placed the corner 5325.22 feet west of the E $\frac{1}{4}$ Cor. of Section 33 which is 25.22 feet further than the distance shown by Norgaard and 26.08 feet further than the distance shown by Moyer. However, chainage in the east half of Sec. 33 would have been very difficult; so it is felt that a 25 foot discrepancy is not too critical. The inplace fence line has been inplace for at least 40 years and is a better indication of the position of the north/south section line. There are stumps of an old tree line along this fence line, which is another indication of the section line position.

A cast iron monument was set so the top is about 2" above the ground. A $\frac{3}{4}$ " by 24" iron pin was set under the monument. A green colored steel fence post was set on the south side of the monument and the top 2 $\frac{1}{2}$ feet was painted orange.

This location is accepted as the position of the government corner because it fits Norgaard's survey and a long standing occupation line.

For further survey information regarding this corner, contact the surveys section, Mn/DOT, Willmar, MN 56201.