

CERTIFICATE OF LOCATION OF GOVERNMENT CORNER

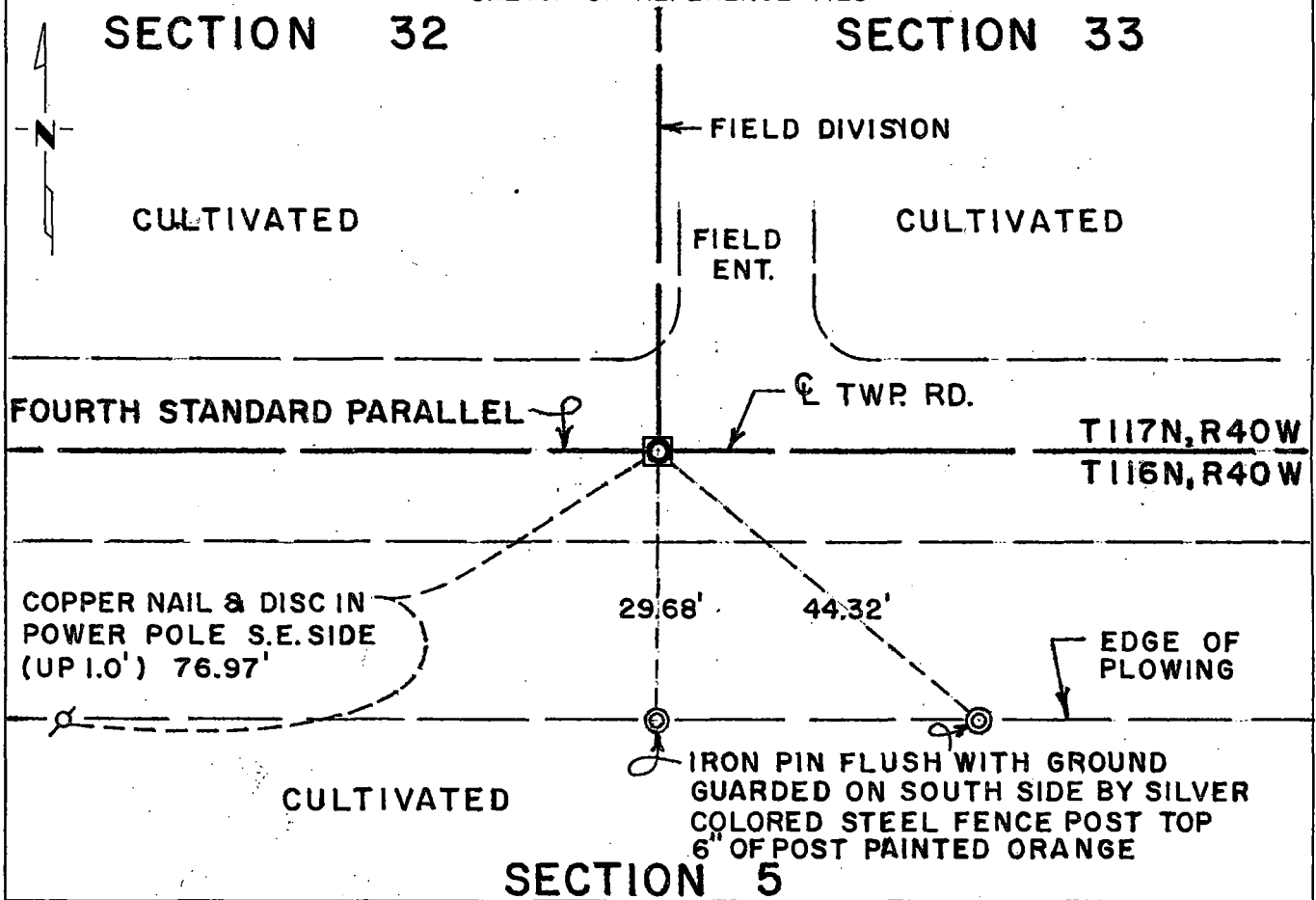
Southeast Corner of Section 32, Township 117N, Range 40W, 5th P.M.

STATE OF MINNESOTA, County of Yellow Medicine

At the corner location shown on the sketch:

- On Apr. 15, 1981 found a granite monument measuring 6"x 6"x 24" about 6"
DATE
below the road surface
- left monument as found, lowered monument, removed monument (explain)
- On Apr. 15, 1981 placed a cast iron monument with a brass plate marked with an "X"
DATE
about 4" below the road surface and above the granite monument.

SKETCH OF REFERENCE TIES



Statement of evidence relative to this corner location is on back of page.

I hereby certify that this document and the data contained herein was prepared by me or under my direct supervision.

Robert C. Jones
SIGNATURE

4/29/81
DATE

Registration No. 11864

Land Surveyor, Professional Engineer

County Surveyor, County Engineer

OFFICE OF THE COUNTY RECORDER
County of Yellow Medicine

I hereby certify that this document was filed in the Co. Recorders office at 9:00 A.M. on the 8 day of May A.D., 19 81

County Recorder Norman J. Godwin

By _____, Deputy

DOCUMENT NO. 178070

Statement of Evidence: Southeast Corner Section 32-117-40

- 1858 - The original Public Land Survey for the Fourth Standard Parallel was done by William J. Neely. A wood post was set in a dirt mound and trenches and pits were dug to mark the corner.
- 1901 - John Norgaard, County Surveyor, found a stake in the government mound and set a jasper stone monument (measuring 6"x 6"x 24") level with the ground.
- 1914 - John Norgaard found the jasper monument that he set in 1901.
- 1981 - R. C. Jones, R.L.S., and a Mn/DOT survey crew found the above described monument at the centerline of an east/west township road and in line with a north/south fence line and field division north. It was about 6" below the road surface and about 9 feet west of the centerline of a field entrance north and about 60 feet east of a north/south fence line to the south.

The found granite monument was lowered and a cast iron monument with a brass plate on top marked with an "X" was placed on top of the granite monument. The top of the cast iron monument is about 4" below the road surface and the top of the granite monument is about 24" below the road surface.

A continuous chain of evidence indicates that this is the location of the original government corner.

For further survey information regarding this corner, contact the Surveys Section, Mn/DOT, Willmar, Mn. 56201.