

CERTIFICATE OF LOCATION OF GOVERNMENT CORNER

Southeast Corner of Section 33, Township 117N, Range 40W, 5th P.M.

STATE OF MINNESOTA, County of Yellow Medicine

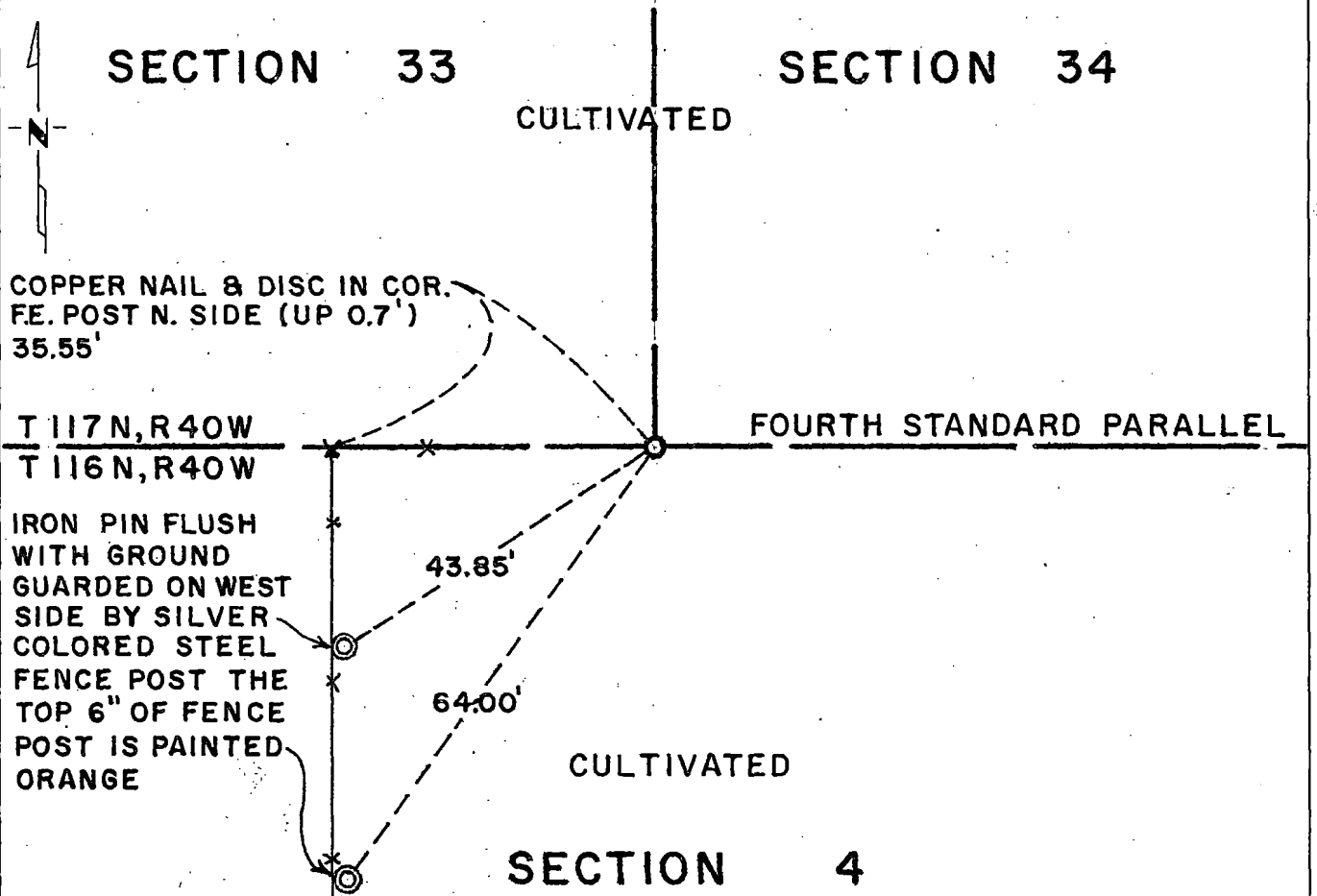
At the corner location shown on the sketch:

On Apr. 16, 1981 found a nothing in place to mark the corner
DATE

left monument as found, lowered monument, removed monument (explain)

On Apr. 17, 1981 placed a cast iron monument with brass plate on top marked with
DATE
an "X" flush with ground - set $\frac{3}{4}$ " x 24" iron pin below monument

SKETCH OF REFERENCE TIES



Statement of evidence relative to this corner location is on back of page.

I hereby certify that this document and the data contained herein was prepared by me or under my direct supervision.

Robert C. Jones 4/30/81
SIGNATURE DATE

Registration No. 11864

- Land Surveyor, Professional Engineer
- County Surveyor, County Engineer

OFFICE OF THE COUNTY RECORDER
County of Yellow Medicine

I hereby certify that this document was filed in the Co. Recorders office at 9:05 A.M. on the 8 day of May A.D., 19 81

County Recorder _____

By _____, Deputy

DOCUMENT NO. 178071

Statement of Evidence: Southeast Corner Section 33-117-40

- 1858 - The original Public Land Survey for the Fourth Standard Parallel was made by William J. Neely. A wood post was set in a mound of dirt and trenches and pits were dug to mark the corner.
- 1887 - L. R. Moyer, County Surveyor, found the wood post marking the corner and set a 26"x 10"x 5" stone to mark the corner.
- 1901 - John Norgaard, County Surveyor, found a stake in the government mound and set a jasper stone monument (measuring 6"x 6"x 24") level with the ground to mark the corner.
- 1981 - R. C. Jones, R.L.S., and a Mn/DOT survey crew searched an area about 6 feet wide and 30 feet long with a tile probe, but could not find any evidence of a monument marking the corner.

The S.E. corner of Sec. 32-117-40 was found. D. K. Kohanek found the position for the N.E. corner of Sec. 4-116-40 previously. Both were tied in on the same coordinate system and it was found that the distance between these two corners is 7908.47 feet as compared to surveys by Moyer and Norgaard which indicate the distance to be 7901.62 feet or only 6.85 feet difference. The fence corner in place about 36 feet west of this corner along with an old east/west fence about $\frac{1}{4}$ mile east indicated the north/south position of the corner. Also there is an old east/west fence from $\frac{1}{4}$ mile to $\frac{1}{2}$ mile west of the corner which was probably on the northerly right-of-way line of an old east/west road which was more or less along the standard parallel but was obliterated about 20 or 30 years ago. This old fence is roughly 33 feet north of the line from the S.E. corner of Section 32-117-40 to the fence corner in place about 36 feet west of the S.E. corner of Sec. 33. It is felt that this corner was destroyed when the old road was obliterated.

The corner was set by proportioning the distance shown on Moyer's and Norgaard's surveys and using the east/west fence lines and the fence corner mentioned above to control the direction from the S.E. corner of Sec. 32-117-40. This location is on a field division line and in line with the fence corner west and an east/west fence east. It also very nearly lines in with a north/south fence line about $\frac{1}{4}$ mile north.

A cast iron monument with a brass plate on top marked with an "X" was set flush with the ground. A $\frac{3}{4}$ " by 24" iron pin was set under the monument. The top of the pin is about 20" below ground.

This position is accepted as the location of the government corner because it fits the old Moyer - Norgaard surveys in an east/west direction and occupation lines in a north/south direction.

For further survey information regarding this corner, contact the Surveys Section, Mn/DOT, Willmar, Mn. 56201.