

CERTIFICATE OF LOCATION OF GOVERNMENT CORNER

East Quarter _____ Corner of Section 33, Township 117N, Range 40W, 5th P.M.
STATE OF MINNESOTA, County of Yellow Medicine

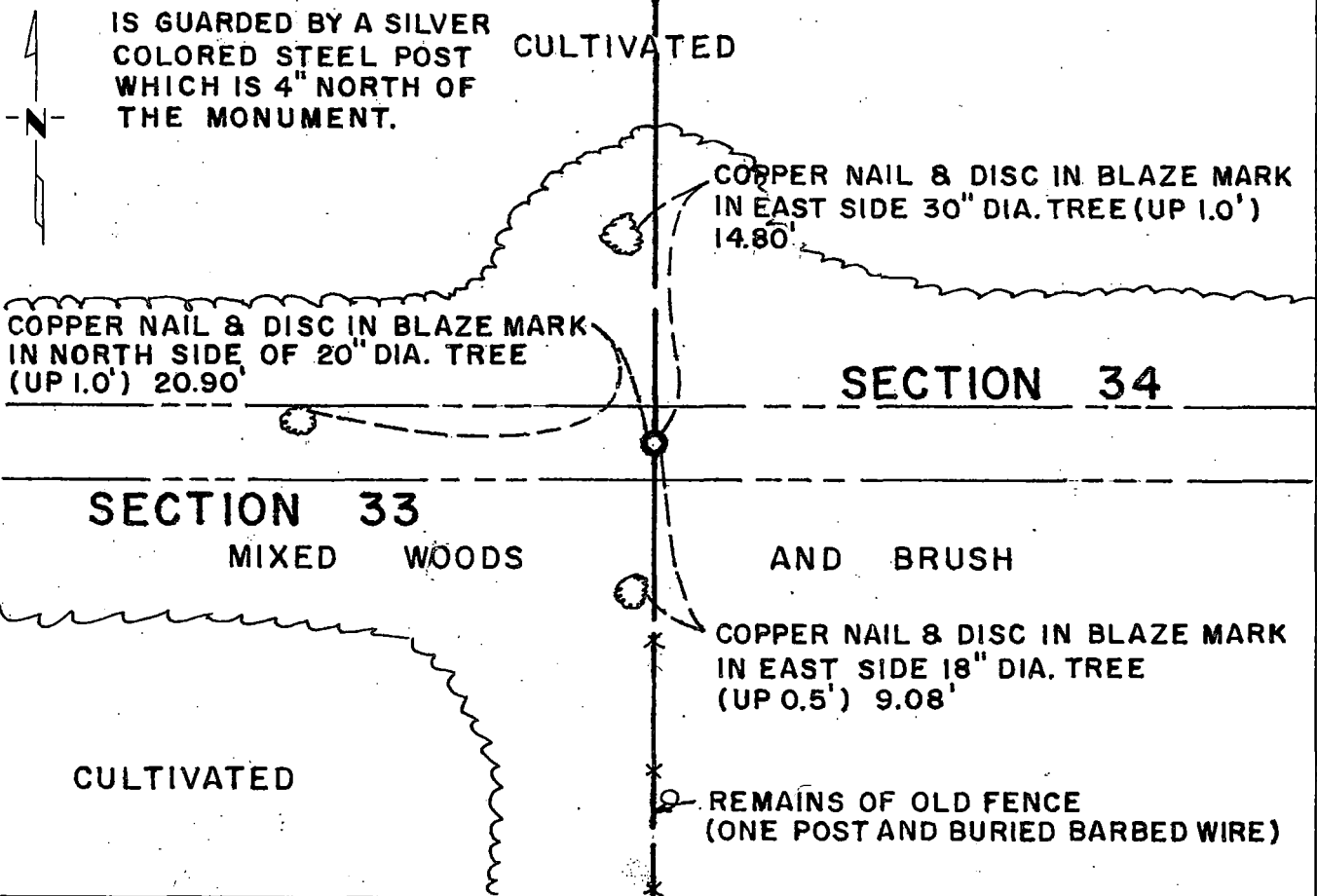
At the corner location shown on the sketch:

On Apr. 16, 1981 found a nothing to mark the corner
DATE

left monument as found, lowered monument, removed monument (explain)

On Apr. 17, 1981 placed a cast iron monument with an "X" in the brass plate flush
DATE with the ground - a $\frac{3}{4}$ " x 24" iron pin was set under the monument.

NOTE: THE CAST IRON MON. SKETCH OF REFERENCE TIES



Statement of evidence relative to this corner location is on back of page.

I hereby certify that this document and the data contained herein was prepared by me or under my direct supervision.

Robert C Jones
SIGNATURE

5/1/81
DATE

Registration No. 11864

Land Surveyor, Professional Engineer

County Surveyor, County Engineer

OFFICE OF THE COUNTY RECORDER
County of Yellow Medicine

I hereby certify that this document was filed in the Co. Recorders office at 9:10 A.M. on the 8 day of May A.D., 1981

County Recorder Thomas A. Opdebe

By _____, Deputy

DOCUMENT NO. 178072

Statement of Evidence: East Quarter Corner Section 33-117-40

- 1865 - The original Public Land Survey was done by James Watson Webb Jr. A wood post was set in a dirt mound and trenches and pits were dug to mark the corner.
- 1887 - L.R. Moyer, County Surveyor, found the old government post and set a 12"x 5"x 5" stone to mark the corner.
- 1910 - John Norgaard, County Surveyor, found a post in the government mound marking the corner.
- 1935 - The Minnesota Highway Department right-of-way map shows the corner to be 582.7 feet north of T.H. 212 centerline Point on Semi-Tangent Station 445+85.9. Apparently no monument was found at that time.
- 1981 - R.C. Jones, R.L.S., and a Mn/DOT survey crew searched the area on three occasions but could not find any evidence of a monument marking the corner. There is a small drainage ditch running in an east/west direction through the area where the corner should be. The top of the ditch is about 15 to 20 feet wide and it is about 3 feet deep. It appears that the monument was destroyed when the ditch was dug.

The corner was set according to the old surveys by Moyer and Norgaard. Moyer found that the angle from the south line of the section to the east line of the section was 90°. Norgaard found that the distance from the southeast corner of the section to the east quarter corner was 2648 feet. The above angle and distance was used to set the corner. This placed the corner 586.45 feet north of T.H. 212 P.O.S.T. 445+87.6, or about 4.8 feet east and 3.0 feet north of the position shown on the old right-of-way map. This position is in line with the remains of an old north/south fence to the south and in the center of an east/west drainage ditch.

A cast iron monument with a brass plate on top was set flush with the ground. The brass plate was marked with an "X". A $\frac{3}{4}$ " diameter by 24" long iron pin was set beneath the cast iron monument so the top of the pin is about 20" below ground.

This is accepted as the location of the government corner because it fits the old surveys and occupation lines and it closely fits the position shown on the right-of-way map.

For further survey information regarding this corner, contact the Surveys Section, Mn/DOT, Willmar, Mn. 56201.