

CERTIFICATE OF LOCATION OF GOVERNMENT CORNER

Southeast Corner of Section 31, Township 114, Range 46, 5th P.M.

STATE OF MINNESOTA, County of Yellow Medicine

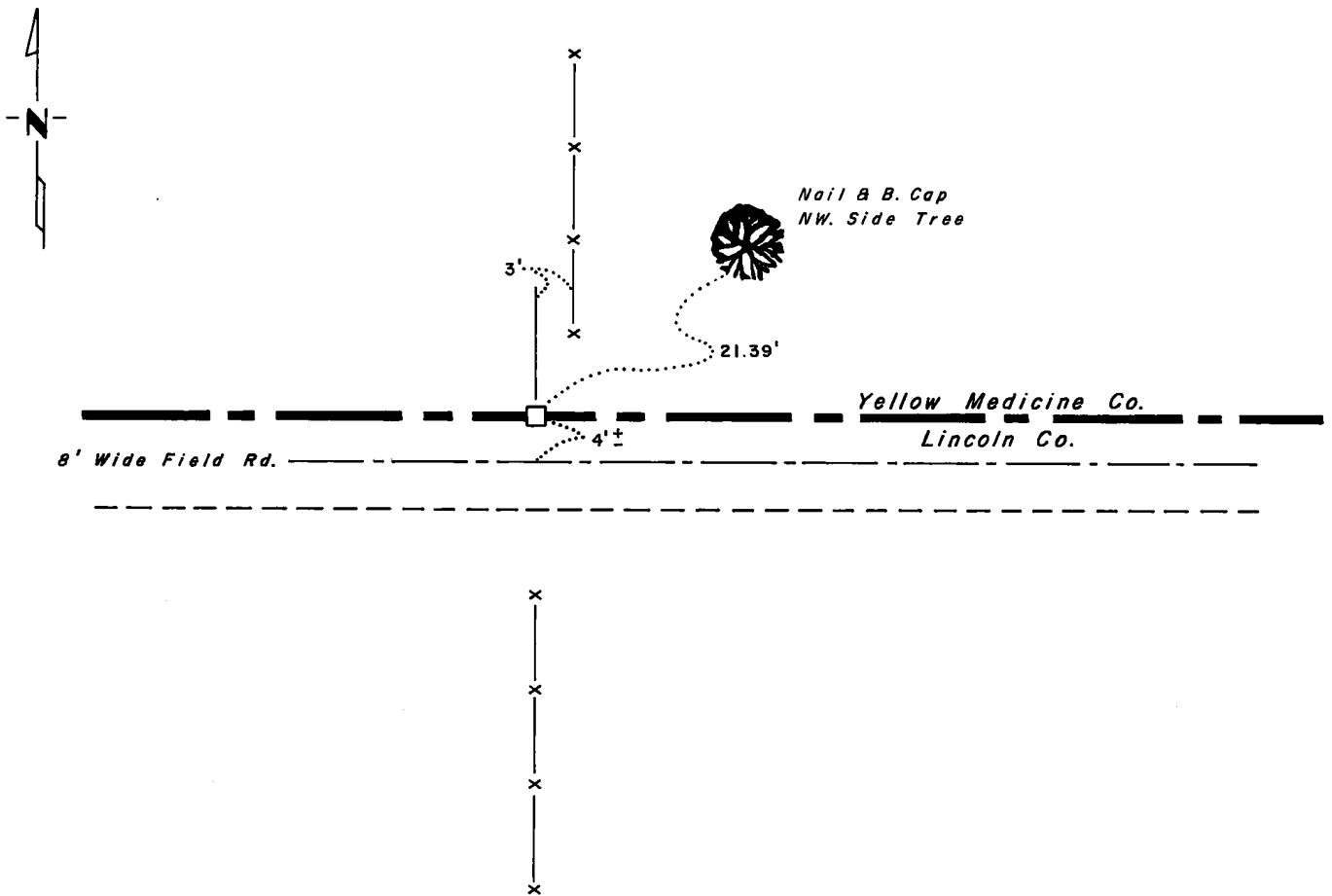
At the corner location shown on the sketch:

On 6-29-77 found a 7"x7" Granite Block in North Wheel Track, Level With Ground
DATE

left monument as found, lowered monument, removed monument (explain)

On 6-29-77 placed a 3/4" x 24" Iron Rod on the East Side Stone, Down 5"
DATE

SKETCH OF REFERENCE TIES



Statement of evidence relative to this corner location is on back of page.

I hereby certify that this document and the data contained herein was prepared by me or under my direct supervision.

Nancy A. Stevens SIGNATURE 3-6-78 DATE

Registration No. 12684

- Land Surveyor, Professional Engineer
 County Surveyor, County Engineer.

OFFICE OF THE County Recorder
County of Yellow Medicine

RECORDED
GRANTOR
GRANTEE
INDEXED

I hereby certify that this document was filed in the Co. Recorder's office at 9:25 A.M. on the 9th day of June A.D., 19 81

County Recorder Norman J. Opdahl

By Kay Nordahl, Deputy

DOCUMENT NO. 178290

Statement of Evidence: Southeast Corner of Section 31, Township 114,
Range 46. Yellow Medicine County.

This corner was originally established by the U.S. General Land Office survey in 1871. The government notes show corner marked with a wood post set in mound of earth with pits and trench dug around the mound.

In 1964, 1973, 1977, the DNR Bureau of Engineering contacted the Yellow Medicine and Lincoln County Offices of the Recorder and Highway Engineer for corner information. The following information was obtained from the Yellow Medicine County Recorder.

In 1899-1901, John Norgaard, County Surveyor, remonumented all section corners in the county and recorded his work in Surveyors Record Book B. On page 200, he states he found the remains of a stake in government mound at this corner and set a 6" x 6" x 24" jasper granite stone level with the ground in the mound. Page 214, of another Record Book, John Norgaard in 1910 surveyed Section 32 and found this corner.

The following information was obtained from the Lincoln County Recorder. On page 48 of surveyors record book 5, Floyd Muchlinski, County Surveyor, found stone block at this corner in a survey of Section 5.

The DNR in 1964, 1973, 1977 found this monument in place on the north edge of a field road and in line with fence south. On June 29, 1977, we set a 3/4" x 24" iron rod on the east side of the stone 5" below the top.

Picture evidence of the corner is on file with the DNR Bureau of Engineering.